

FISHERS ISLAND, NEW YORK

AL-5345 (FAA)

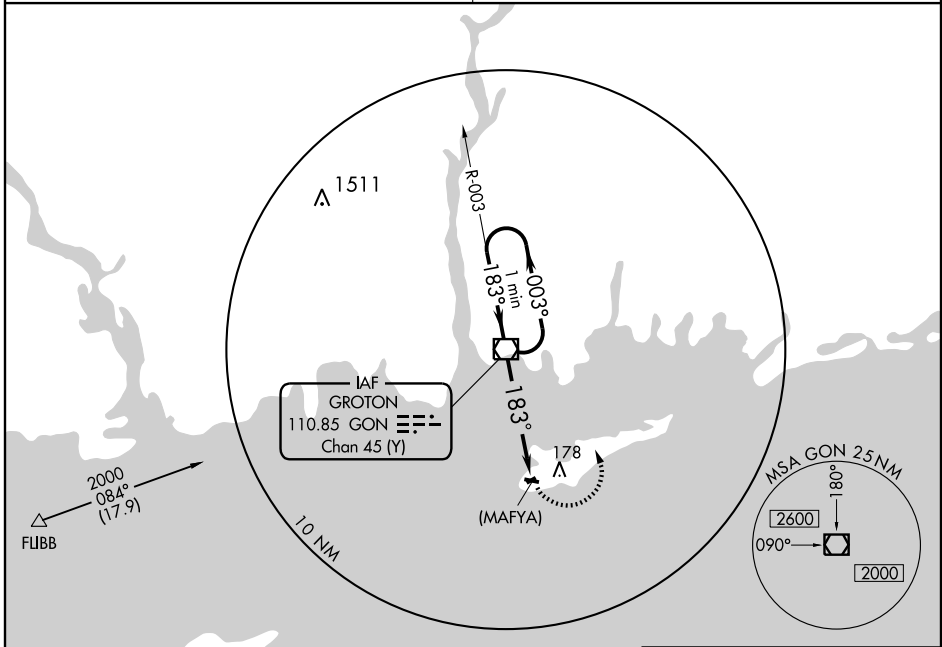
VOR/DME GON 110.85 Chan 45 (Y)	APP CRS 183°	Rwy Idg TDZE Apt Elev	N/A N/A 9
---	------------------------	-----------------------------	--------------------------------------

VOR or GPS-A

FISHERS ISLAND / ELIZABETH FIELD (ØB8)

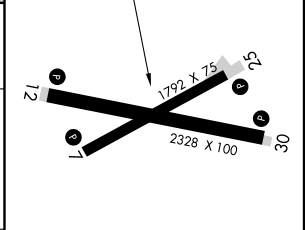
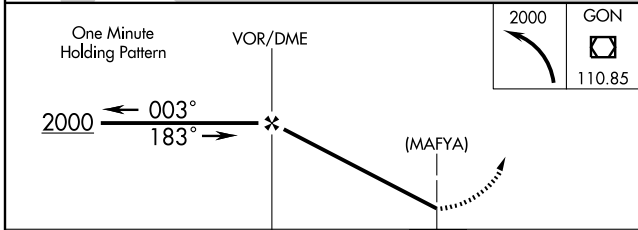
<p>▼ Use Groton-New London altimeter setting; when not received, use Block Island State altimeter setting.</p> <p>▲ NA Circling not authorized at night to Rwys 7 and 25.</p>	<p>MISSED APPROACH: Climbing left turn to 2000 direct GON VOR/DME and hold.</p>
---	---

<p>PROVIDENCE APP CON *</p> <p>125.75 319.2</p>	<p>UNICOM</p> <p>122.8 (CTAF) 0</p>
--	--



NoPT for arrival on GON VOR/DME airway radial 024.

ELEV 9	183° 4.7 NM from FAF
--------	----------------------



CATEGORY	A	B	C	D
CIRCLING	480-1	471 (500-1)	480-1½ 471 (500-1½)	NA
BLOCK ISLAND STATE ALTIMETER SETTING MINIMUMS				
CIRCLING	560-1	551 (600-1)	560-1½ 551 (600-1½)	NA

REIL Rwys 7, 12, 25 and 30	MIRL Rwys 7-25 and 12-30 0
FAF to MAP 4.7 NM	
Knots	60 90 120 150 180
Min:Sec	4:42 3:08 2:21 1:53 1:34

FISHERS ISLAND, NEW YORK

Amdt 6 05132

41°15'N - 72°02'W

FISHERS ISLAND / ELIZABETH FIELD (ØB8)

VOR or GPS-A

NE-2, 19 NOV 2009 to 17 DEC 2009

NE-2, 19 NOV 2009 to 17 DEC 2009