

GPS RWY 22

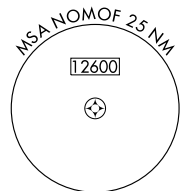
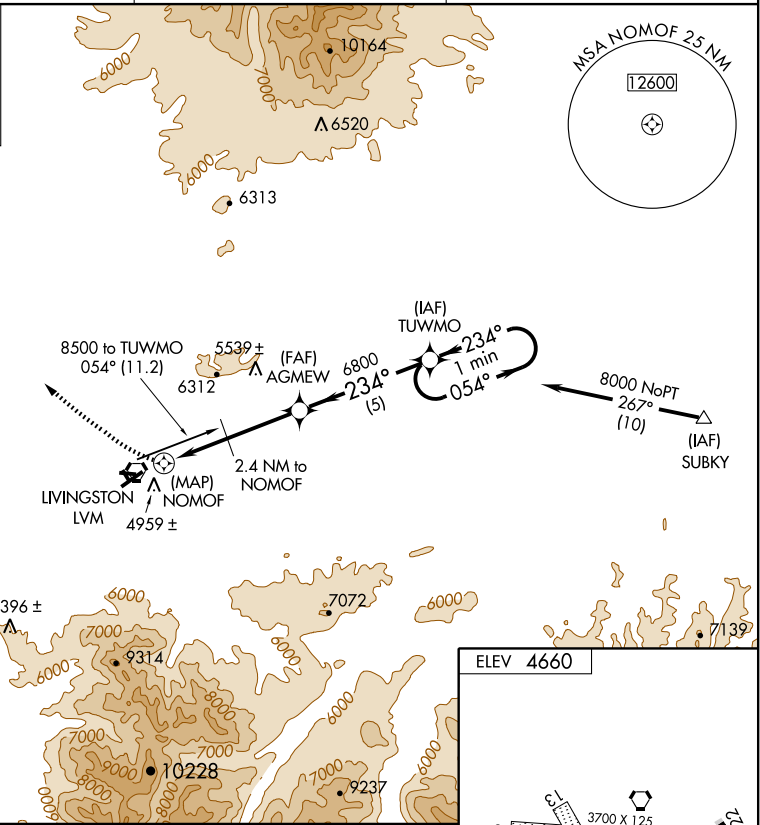
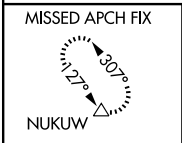
LIVINGSTON/MISSION FIELD (LVM)

APP CRS 234°	Rwy Idg 5701
	TDZE 4649
	Apt Elev 4660

▽
△ NA

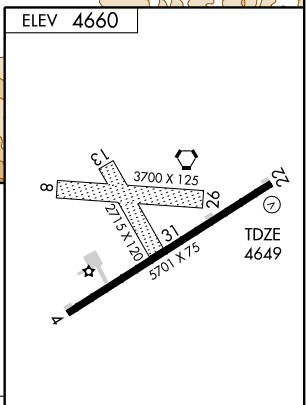
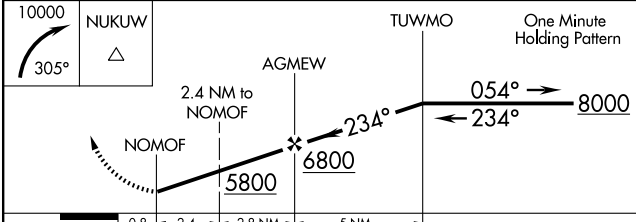
MISSED APPROACH: Climbing right turn to 10000 via 305° course to NUKUW WP and hold.

ASOS 135.275	GREAT FALLS RADIO 122.2	UNICOM 123.0 (CTAF) 0
------------------------	-----------------------------------	--



NW-1, 19 NOV 2009 to 17 DEC 2009

NW-1, 19 NOV 2009 to 17 DEC 2009



	0.8	2.4	2.8 NM	5 NM
CATEGORY	A	B	C	D
S-22	5080-1	431 (500-1)	5080-1½ 431 (500-1½)	5080-1½ 431 (500-1½)
CIRCLING	5360-1 700 (700-1)	5380-1 720 (800-1)	5380-2 720 (800-2)	5580-3 920 (1000-3)

REIL Rwy 22
MIRL Rwy 4-22 **0**