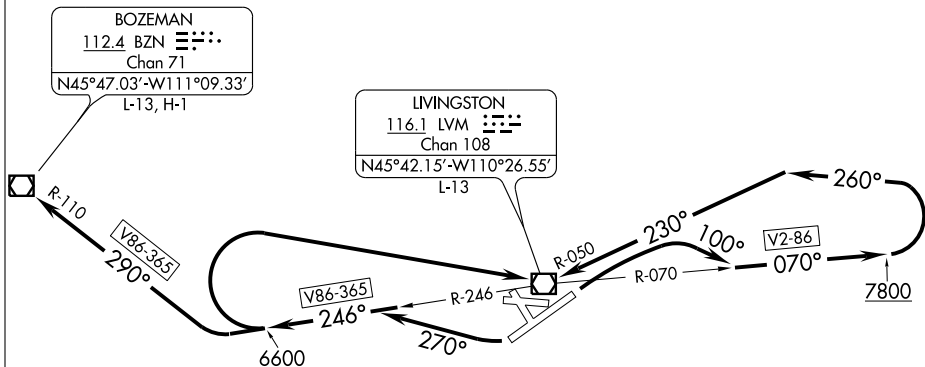


LIVINGSTON ONE DEPARTURE (OBSTACLE)

GREAT FALLS RADIO
122.2
ASOS 135.275



TAKE-OFF MINIMUMS

Rwys 8, 13, 26, 31: NA-Environmental.
 Rwy 4: Standard.
 Rwy 22: Standard with minimum climb of 300' per NM to 6800 or 2700-3 for climb in visual conditions.

TAKE-OFF OBSTACLE NOTE

Rwy 22: Multiple trees beginning 400' from DER, 256' right of centerline, up to 100' AGL/4719' MSL.

NOTE: Chart not to scale.

DEPARTURE ROUTE DESCRIPTION

TAKE-OFF RUNWAY 4: Climbing right turn heading 100° and LVM VOR/DME R-070 outbound; aircraft departing eastbound, climb via LVM R-070/V2-86 enroute. All others continue climb on LVM R-070 to 7800, then climbing left turn via heading 260° and LVM R-050 to cross LVM VOR/DME at or above 9000, then climb enroute.

TAKE-OFF RUNWAY 22: Climbing right turn heading 270° and LVM VOR/DME R-246 outbound; aircraft departing eastbound, continue climb via LVM R-246 outbound to 6600, then climbing right turn direct LVM VOR/DME, then climb on LVM R-070/V2-86 enroute. All other aircraft continue climb via LVM VOR/DME R-246 and BZN VOR/DME R-110 to BZN. For climb in visual conditions, cross LVM VOR/DME at or above 9000 before proceeding via filed airway route.

NW-1, 11 MAR 2010 to 08 APR 2010

NW-1, 11 MAR 2010 to 08 APR 2010