

LOC I-TMB <b>108.7</b>	APP CRS <b>090°</b>	Rwy Idg TDZE Apt Elev	<b>5002</b> <b>8</b> <b>8</b>
---------------------------	------------------------	-----------------------------	-------------------------------------

# ILS or LOC RWY 9R

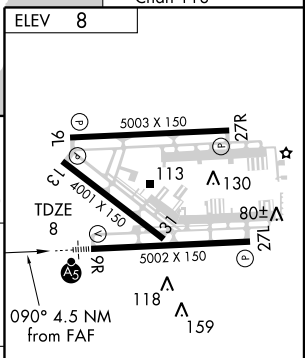
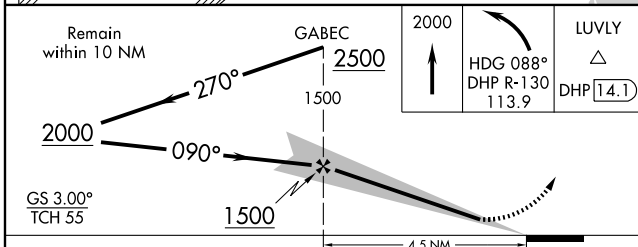
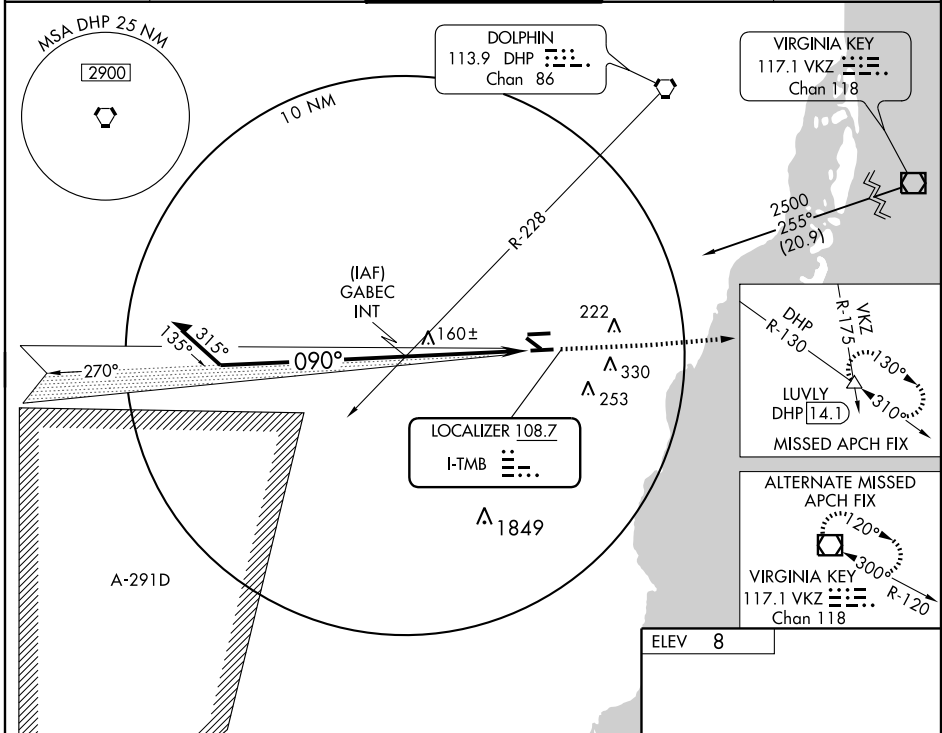
MIAMI / KENDALL-TAMIAMI EXECUTIVE (TMB)

**⚠** Circling to Rwy 13 NA at night. When local altimeter setting not received, use Miami Intl altimeter setting and increase S-ILS 9R DA to 235 feet and all MDA 40 feet, increase Circling Cat. D visibility ¼ mile.

**MALSR**  
AS

**MISSED APPROACH:** Climb to 2000 then left turn via heading 088° and DHP VORTAC R-130 to LUVLY Int/DHP 14.1 DME and hold.

ATIS <b>124.0</b>	MIAMI APP CON <b>125.5 354.1</b>	TAMIAMI TOWER ★ <b>118.9 (CTAF)</b> 0	GND CON <b>121.7</b>	CLNC DEL <b>133.0</b>
----------------------	-------------------------------------	--	-------------------------	--------------------------



CATEGORY	A	B	C	D
S-ILS 9R		208-½	200 (200-½)	
S-LOC 9R	460-½	452 (500-½)	460-¾ 452 (500-¾)	460-1 452 (500-1)
CIRCLING	460-1	452 (500-1)	460-1½ 452 (500-1½)	640-2 632 (700-2)

HIRL Rwy 9R-27L  
MIRL Rwy 9L-27R  
MIRL Rwy 13-31 0

FAF to MAP 4.5 NM

Knots	60	90	120	150	180
Min:Sec	4:30	3:00	2:15	1:48	1:30

SE-3, 11 MAR 2010 to 08 APR 2010

SE-3, 11 MAR 2010 to 08 APR 2010