

FORT STOCKTON, TEXAS

AL-5350 (FAA)

# VOR/DME RWY 30

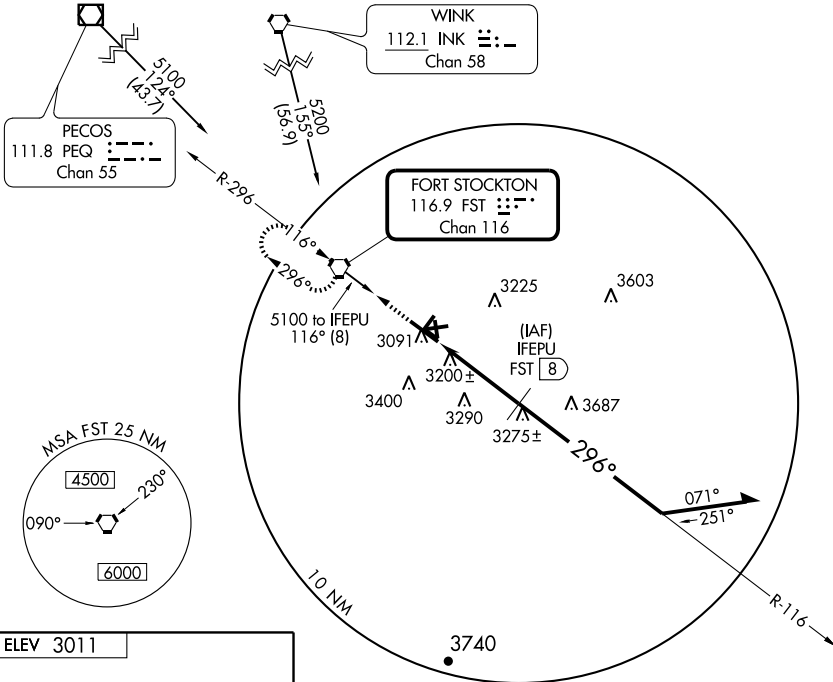
FORT STOCKTON-PECOS COUNTY (FST)

VORTAC FST <b>116.9</b> Chan <b>116</b>	APP CRS <b>296°</b>	Rwy Idg TDZE Apt Elev	<b>7508</b> <b>3011</b> <b>3011</b>
---	------------------------	-----------------------------	---



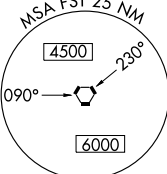
MISSED APPROACH: Climb to 5000 direct FST VORTAC and hold.

ASOS <b>118.525</b>	ALBUQUERQUE CENTER <b>135.875 292.15</b>	UNICOM <b>122.8 (CTAF) 0</b>
------------------------	---	---------------------------------

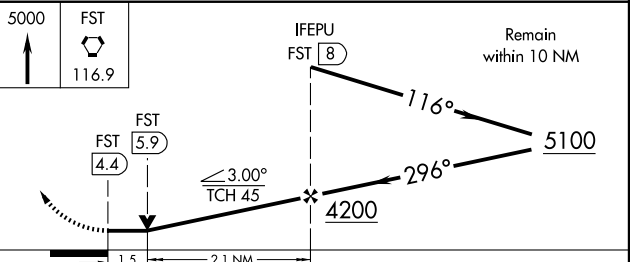
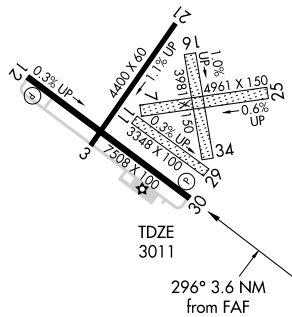


PECOS  
111.8 PEQ  
Chan 55

WINK  
112.1 INK  
Chan 58



ELEV 3011



CATEGORY	A	B	C	D
S-30	3540-1 529 (600-1)		3540-1½ 529 (600-1½)	3540-1¾ 529 (600-1¾)
CIRCLING	3540-1 529 (600-1)		3540-1½ 529 (600-1½)	3760-2½ 749 (800-2½)

MIRL Rwy's 3-21 and 12-30 0

FORT STOCKTON, TEXAS  
Orig 09295

30°55'N - 102°55'W

# VOR/DME RWY 30

SC-3, 11 MAR 2010 to 08 APR 2010

SC-3, 11 MAR 2010 to 08 APR 2010