

# ILS or LOC RWY 4

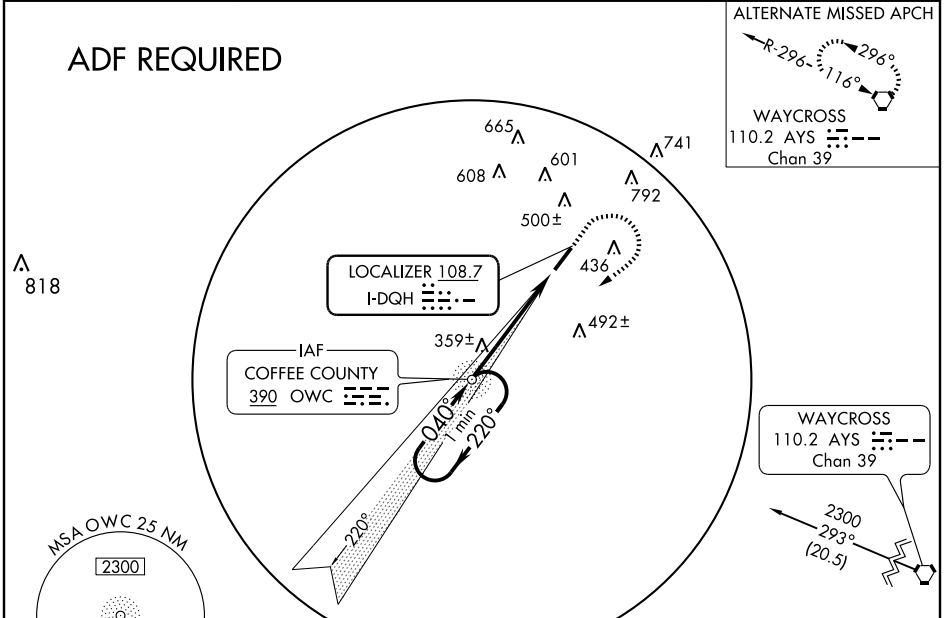
DOUGLAS MUNI (DQH)

LOC I-DQH <b>108.7</b>	APP CRS <b>040°</b>	Rwy ldg <b>6000</b> TDZE <b>255</b> Apt Elev <b>257</b>
---------------------------	------------------------	--

**ADF REQUIRED.** When local altimeter setting not received, use Alma altimeter setting and increase all DA/MDAS 60 feet and increase S-LOC 4 and circling Cat. C visibility 1/4 mile. For inoperative MALSR, when using Alma altimeter setting increase S-ILS 4 all Cats visibility 1 mile.

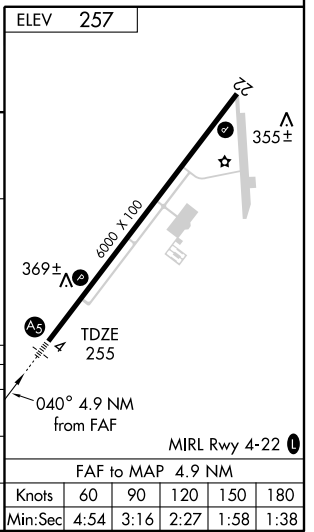
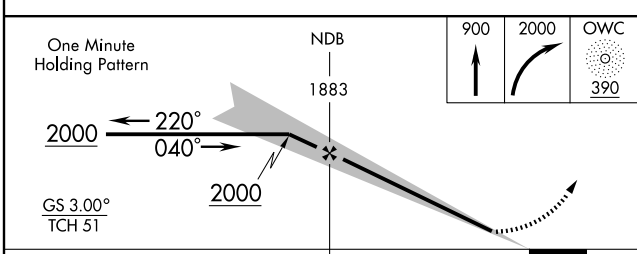
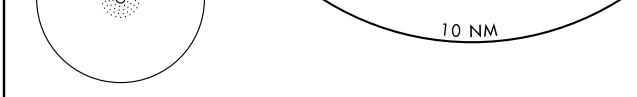
**MALSRS** MISSED APPROACH: Climb to 900 then climbing right turn to 2000 direct OWC NDB and hold.

AWOS-3 <b>119.075</b>	JACKSONVILLE CENTER <b>132.3 290.4</b>	GCO <b>121.725</b>	UNICOM <b>122.8 (CTAF)</b>
--------------------------	---	-----------------------	-------------------------------



SE-4, 11 MAR 2010 to 08 APR 2010

SE-4, 11 MAR 2010 to 08 APR 2010



CATEGORY	A	B	C	D
S-ILS 4	455-1/2		200 (200-1/2)	
S-LOC 4	620-1/2	365 (400-1/2)		620-3/4 365 (400-3/4)
CIRCLING	720-1	463 (500-1)	800-1 1/2 543 (600-1 1/2)	820-2 563 (600-2)

FAF to MAP 4.9 NM					
Knots	60	90	120	150	180
Min:Sec	4:54	3:16	2:27	1:58	1:38