

RNAV (GPS) RWY 22

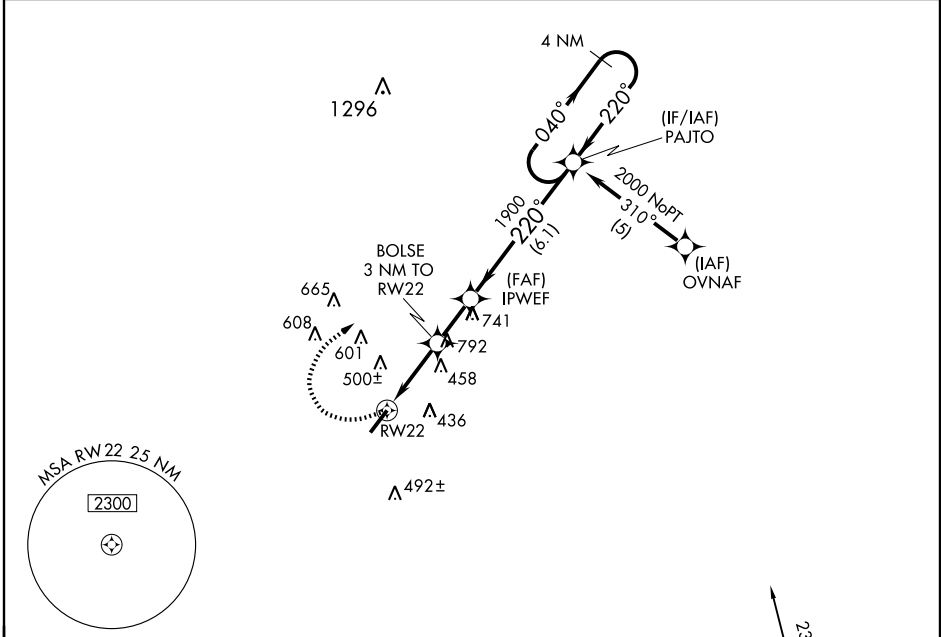
DOUGLAS MUNI (DQH)

APP CRS 220°	Rwy Idg 6000
	TDZE 257
	Apt Elev 257

⚠ DME/DME RNP-0.3 NA. When local altimeter setting not received, use Alma altimeter setting and increase all MDAS 60 feet, and increase LNAV Cat. D and circling Cat. C visibility ¼ mile. VDP NA when using Alma altimeter setting.

⚠ MISSED APPROACH: Climbing right turn to 2000 direct PAJTO and hold.

AWOS-3 119.075	JACKSONVILLE CENTER 132.3 290.4	GCO 121.725	UNICOM 122.8 (CTAF) 0
--------------------------	---	-----------------------	---------------------------------



SE-4, 11 MAR 2010 to 08 APR 2010

SE-4, 11 MAR 2010 to 08 APR 2010

