

HUNTINGBURG, INDIANA

AL-5378 (FAA)

VOR/DME HNB	APP CRS	Rwy Idg	5000
109.2	271°	TDZE	529
Chan 29		Apt Elev	529

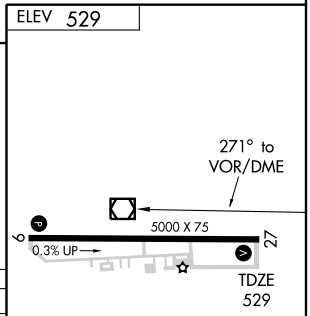
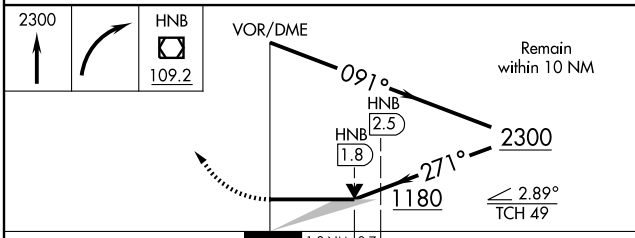
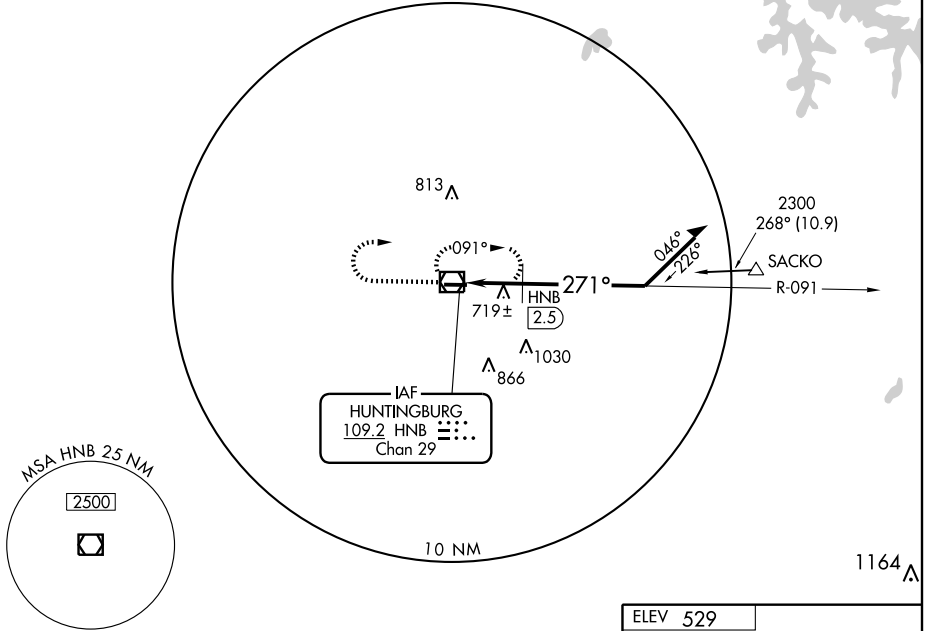
VOR RWY 27
HUNTINGBURG (HNB)

<p>AWOS-3 118.250</p>		<p>EVANSVILLE APP CON * 126.4 226.4</p>		<p>CLNC DEL 118.8</p>		<p>UNICOM 122.8 (CTAF) 0</p>	
---------------------------	--	---	--	---------------------------	--	----------------------------------	--

MISSED APPROACH: Climb to 2300 then right turn direct HNB VOR/DME and hold.

EC-2, 19 NOV 2009 to 17 DEC 2009

EC-2, 19 NOV 2009 to 17 DEC 2009



CATEGORY	A	B	C	D
S-27	1180-1	651 (700-1)	1180-1¼ 651 (700-1¼)	1180-2 651 (700-2)
CIRCLING	1180-1	651 (700-1)	1180-1¼ 651 (700-1¼)	1180-2 651 (700-2)
DME MINIMUMS				
S-27	980-1	451 (500-1)	980-1¼ 451 (500-1¼)	980-1½ 451 (500-1½)
CIRCLING	980-1 451 (500-1)	1020-1 491 (500-1)	1020-1½ 491 (500-1½)	1080-2 551 (600-2)

ELEV 529					
MIRL Rwy 9-27 0					
REIL Rwys 9 and 27 0					
Knots	60	90	120	150	180
Min:Sec					

HUNTINGBURG, INDIANA
Amdt 3 07354

38°15'N - 86°57'W

HUNTINGBURG (HNB)
VOR RWY 27