

HUNTINGBURG, INDIANA

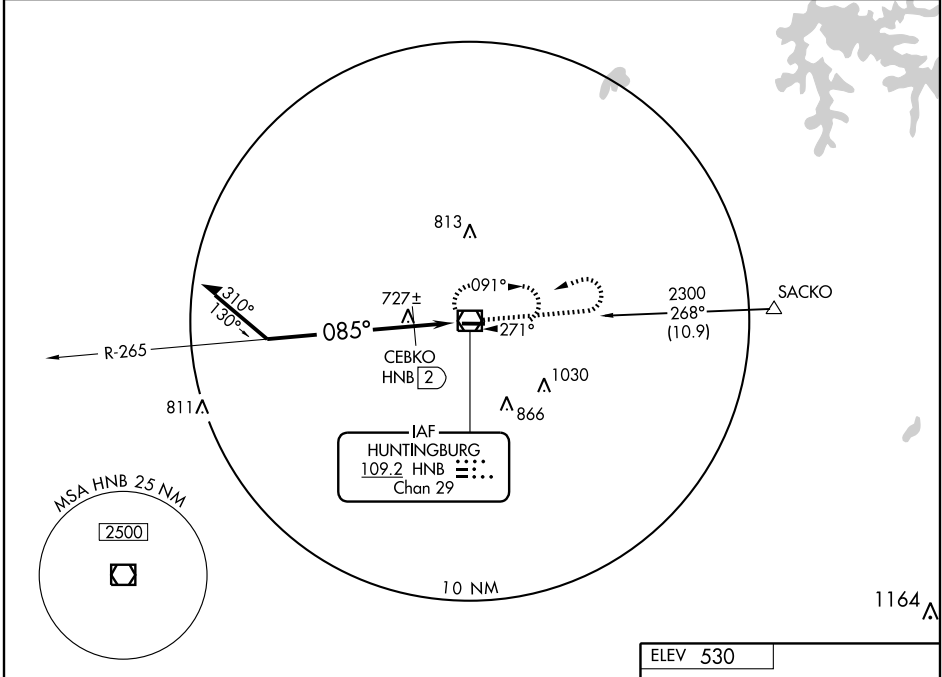
AL-5378 (FAA)

VOR RWY 9
HUNTINGBURG (HNB)

VOR/DME HNB 109.2 Chan 29	APP CRS 085°	Rwy Idg TDZE Apt Elev	5000 525 530
---	------------------------	-----------------------------	---

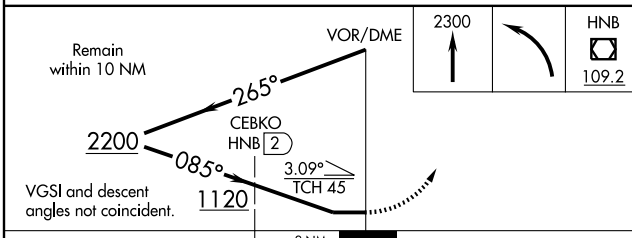
▼ NA
▲ MISSED APPROACH: Climb to 2300 then left turn direct HNB VOR/DME and hold.

AWOS-3 118.250	EVANSVILLE APP CON * 126.4 226.4	CLNC DEL 118.8	UNICOM 122.8 (CTAF) 0
--------------------------	--	--------------------------	---------------------------------



EC-2, 19 NOV 2009 to 17 DEC 2009

EC-2, 19 NOV 2009 to 17 DEC 2009



ELEV 530	HNB 109.2
085° to VOR/DME 5000 X 75 0.3% UP →	
TDZE 525	MIRL Rwy 9-27 0
	REIL Rwys 9 and 27 0
Knots	60 90 120 150 180
Min:Sec	

CATEGORY	A	B	C	D
S-9	1120-1	595 (600-1)	1120-1½ 595 (600-1½)	1120-1¾ 595 (600-1¾)
CIRCLING	1120-1	590 (600-1)	1120-1½ 590 (600-1½)	1120-2 590 (600-2)
CEBKO DME MINIMUMS				
S-9	980-1	455 (500-1)	980-1¼ 455 (500-1¼)	980-1½ 455 (500-1½)
CIRCLING	980-1 450 (500-1)	1020-1 490 (500-1)	1020-1½ 490 (500-1½)	1080-2 550 (600-2)

HUNTINGBURG, INDIANA
Amdt 4 07354

38°15'N - 86°57'W

HUNTINGBURG (HNB)
VOR RWY 9