

LOC RWY 24

ONEONTA MUNI (N66)

| | | |
|---------------------------|------------------------|---|
| LOC I-OZX 108.9 | APP CRS 237° | Rwy Idg 4200 TDZE 1758 Apt Elev 1763 |
|---------------------------|------------------------|---|

▽ When local altimeter setting not received, use Binghamton altimeter setting and increase all MDAs 140 feet and increase Circling Cat B visibility $\frac{1}{4}$.
△ NA Inoperative table does not apply. Visibility reduction by helicopters NA. Localizer unusable 4.2 NM after passing OZ LOM.

MALS



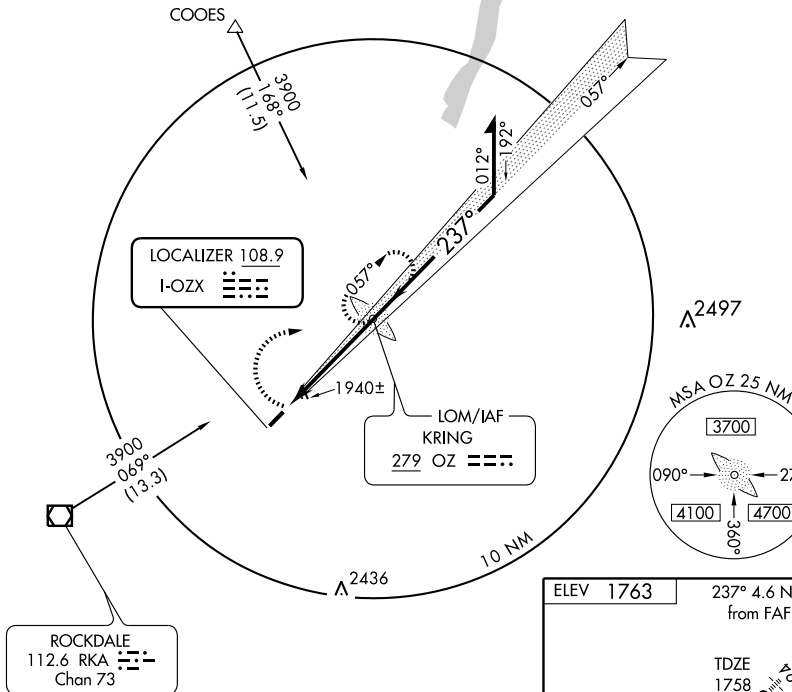
MISSED APPROACH:
Climbing right turn to 3900 direct OZ LOM and hold, continue climb-in-hold to 3900.

AWOS-3
119.575

BOSTON CENTER
133.25 279.5

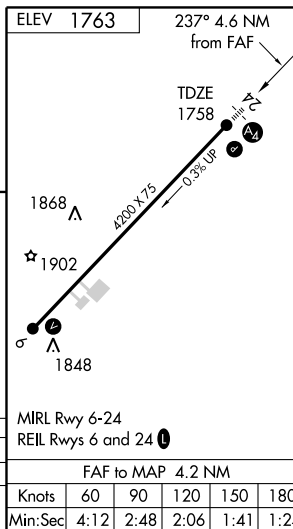
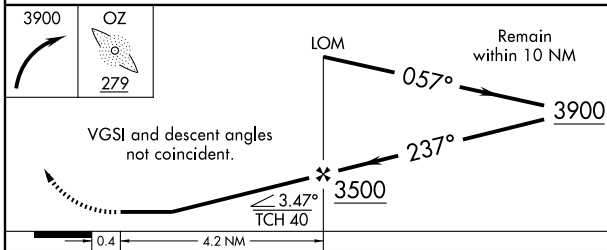
UNICOM
122.8 (CTAF)

ADF REQUIRED



NE-2, 19 NOV 2009 to 17 DEC 2009

NE-2, 19 NOV 2009 to 17 DEC 2009



| CATEGORY | A | B | C | D |
|----------|-----------------------|-----------------------|---|----|
| S-24 | 2220-1 | 462 (500-1) | | NA |
| CIRCLING | 2340-1 577 (600-1) | 2380-1 617 (700-1) | | NA |

FAF to MAP 4.2 NM

| | | | | | |
|---------|------|------|------|------|------|
| Knots | 60 | 90 | 120 | 150 | 180 |
| Min:Sec | 4:12 | 2:48 | 2:06 | 1:41 | 1:24 |