

ONEONTA, NEW YORK

RNAV (GPS) RWY 24

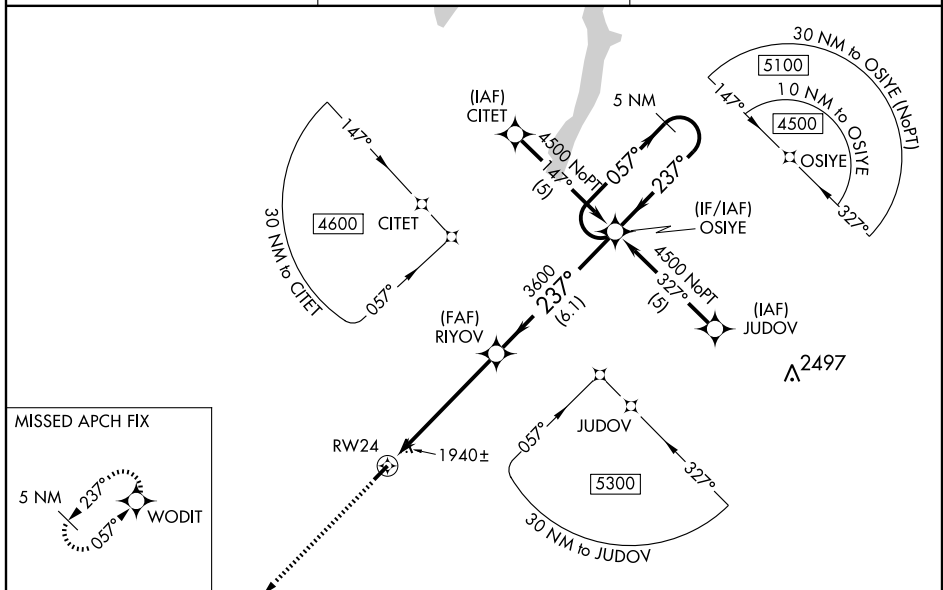
ONEONTA MUNI (N66)

WAAS CH 70409 W24A	APP CRS 237°	Rwy Idg TDZE Apt Elev	4200 1758 1763
---------------------------------	------------------------	-----------------------------	---

NA When local altimeter setting not received, use Binghamton altimeter setting and increase all DA 122 feet, all MDA 140 feet, and increase LPV and LNAV/VNAV visibilities ½ mile all Cats, and Circling visibility Cat B ¼ mile. Baro-VNAV NA when using Binghamton altimeter setting. For uncompensated Baro-VNAV systems, LNAV/VNAV NA below -18°C (0°F) or above 54°C (130°F). Visibility reduction by helicopters NA. Inoperative table does not apply. DME/DME RNP-0.3 NA.

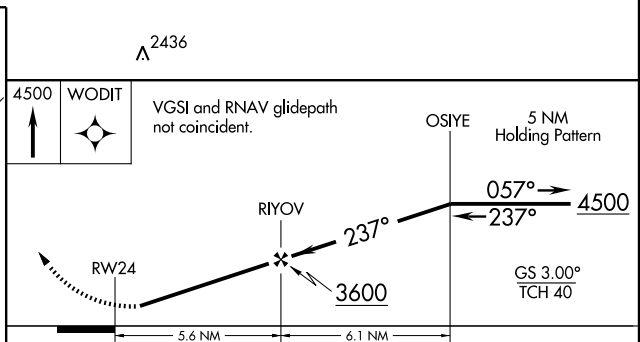
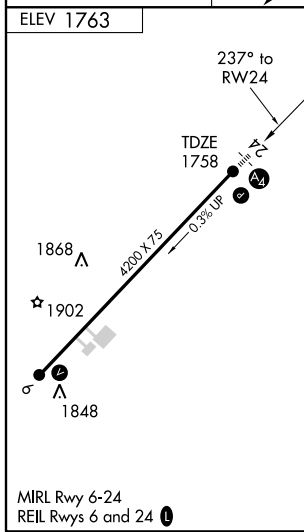
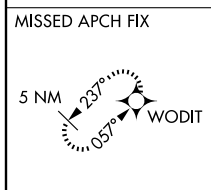
MALS
MISSED APPROACH:
Climb to 4500 direct WODIT and hold.

AWOS-3 119.575	BOSTON CENTER 133.25 279.5	UNICOM 122.8 (CTAF)
--------------------------	--------------------------------------	-------------------------------



NE-2, 19 NOV 2009 to 17 DEC 2009

NE-2, 19 NOV 2009 to 17 DEC 2009



CATEGORY	A	B	C	D
LPV DA	2191-1½	433 (500-1½)		NA
LNAV/VNAV DA	2258-1¾	500 (500-1¾)		NA
LNAV MDA	2300-1	542 (600-1)		NA
CIRCLING	2340-1 577 (600-1)	2380-1 617 (700-1)		NA

ONEONTA, NEW YORK
Orig 08269

42°31'N - 75°04'W

RNAV (GPS) RWY 24

ONEONTA MUNI (N66)