

RNAV (GPS) RWY 6

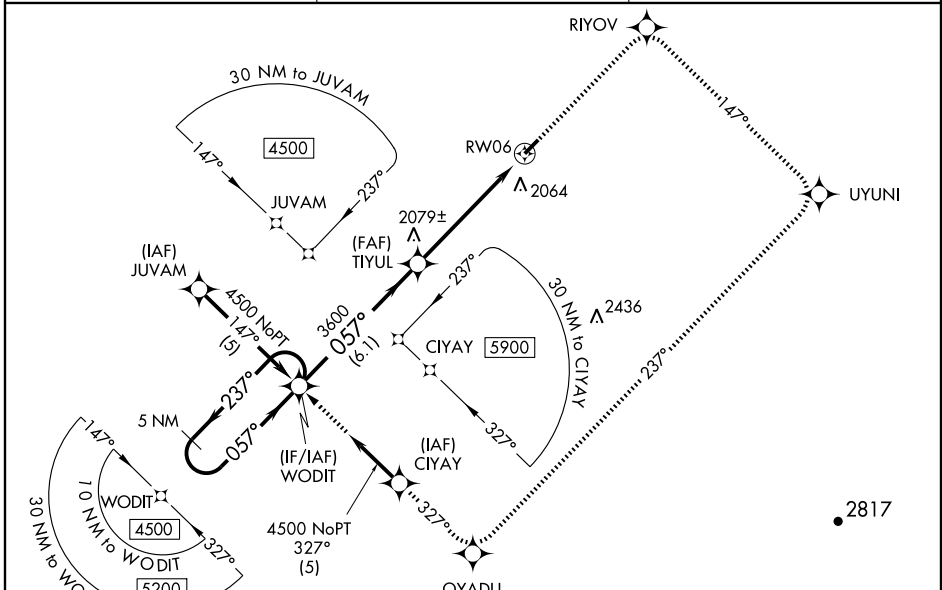
ONEONTA MUNI (N66)

WAAS CH 86309 W06A	APP CRS 057°	Rwy Idg 4200 TDZE 1763 Apt Elev 1763
--	------------------------	---

⚠ When local altimeter setting not received, use Binghamton altimeter setting and increase all DA 122 feet, all MDA 140 feet, and increase LPV and LNAV/VNAV visibilities ½ mile all Cats, and circling visibility Cat B ¼ mile. Baro-VNAV NA when using Binghamton altimeter setting. For uncompensated Baro-VNAV systems, LNAV/VNAV NA below -18°C (0°F) or above 54°C (130°F). Visibility reduction by helicopters NA. DME/DME RNP-0.3 NA.

MISSED APPROACH: Climb to 4500 direct RIYOV and right turn via 147° track to UYUNI and right turn via 237° track to OYADU and via 327° track to WODIT and hold.

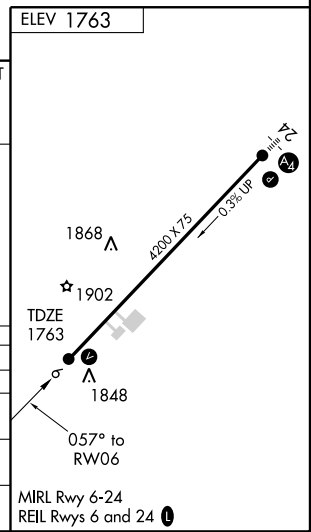
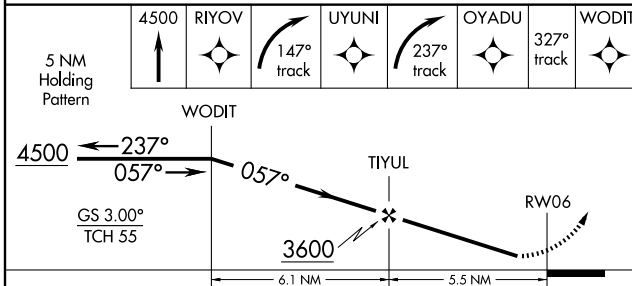
AWOS-3 119.575	BOSTON CENTER 133.25 279.5	UNICOM 122.8 (CTAF)
--------------------------	--------------------------------------	-------------------------------



NE-2, 19 NOV 2009 to 17 DEC 2009

NE-2, 19 NOV 2009 to 17 DEC 2009

5 NM Holding Pattern	4500	RIYOV	UYUNI	OYADU	327° track	WODIT
----------------------	------	-------	-------	-------	------------	-------



CATEGORY	A	B	C	D
LPV DA	2075-1	312 (400-1)		NA
LNAV/VNAV DA	2351-2	588 (600-2)		NA
LNAV MDA	2260-1	497 (500-1)		NA
CIRCLING	2340-1 577 (600-1)	2380-1 617 (700-1)		NA

MIRL Rwy 6-24
REIL Rws 6 and 24