

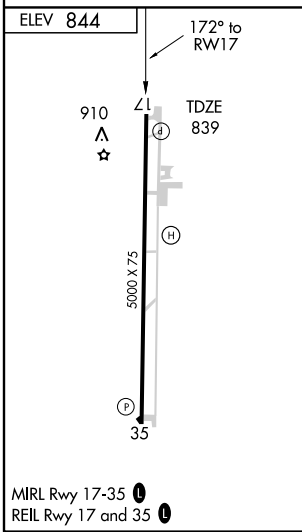
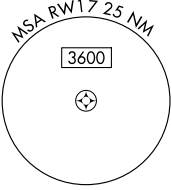
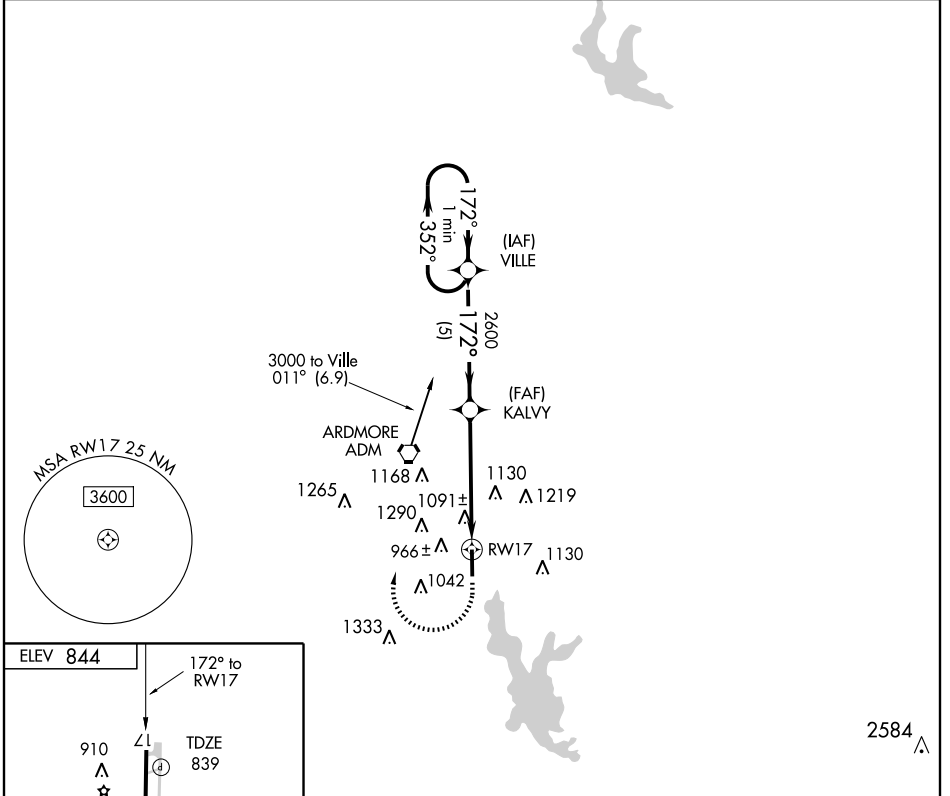
GPS RWY 17

ARDMORE DOWNTOWN EXECUTIVE (1F0)

APP CRS 172°	Rwy Idg 5000
	TDZE 839
	Apt Elev 844

<p>▽</p> <p>△ NA</p>	<p>MISSED APPROACH: Climb to 1700 then climbing right turn to 3000 direct VILLE WP and hold.</p>
------------------------------------	--

<p>AWOS-3 118.15</p>	<p>FORT WORTH CENTER 128.1 327.15</p>	<p>GCO 121.725</p>	<p>UNICOM 122.7 (CTAF) 0</p>
---------------------------------	--	-------------------------------	--



<p>One Minute Holding Pattern</p> <p>VILLE</p> <p>3000 ← 352°</p> <p>172° →</p> <p>VGSI and descent angle not coincident.</p>	<p>1700</p> <p>3000</p> <p>VILLE</p> <p>KALVY</p> <p>2600</p> <p>3.26°</p> <p>TCH 29</p> <p>5 NM</p> <p>5 NM</p>															
<table border="1"> <thead> <tr> <th>CATEGORY</th> <th>A</th> <th>B</th> <th>C</th> <th>D</th> </tr> </thead> <tbody> <tr> <td>S-17</td> <td>1360-1</td> <td>521 (600-1)</td> <td>1360-1½ 521 (600-1½)</td> <td>1360-1¾ 521 (600-1¾)</td> </tr> <tr> <td>CIRCLING</td> <td>1400-1</td> <td>556 (600-1)</td> <td>1400-1½ 556 (600-1½)</td> <td>1640-2½ 796 (800-2½)</td> </tr> </tbody> </table>	CATEGORY	A	B	C	D	S-17	1360-1	521 (600-1)	1360-1½ 521 (600-1½)	1360-1¾ 521 (600-1¾)	CIRCLING	1400-1	556 (600-1)	1400-1½ 556 (600-1½)	1640-2½ 796 (800-2½)	<p>2584 △</p>
CATEGORY	A	B	C	D												
S-17	1360-1	521 (600-1)	1360-1½ 521 (600-1½)	1360-1¾ 521 (600-1¾)												
CIRCLING	1400-1	556 (600-1)	1400-1½ 556 (600-1½)	1640-2½ 796 (800-2½)												

GPS RWY 17

SC-1, 11 MAR 2010 to 08 APR 2010

SC-1, 11 MAR 2010 to 08 APR 2010