

SOMERSET, KENTUCKY

AL-5424 (FAA)

LOC/DME I-SME 109.3 Chan 30	APP CRS 048°	Rwy Idg TDZE Apt Elev	5287 927 927
---	------------------------	-----------------------------	---

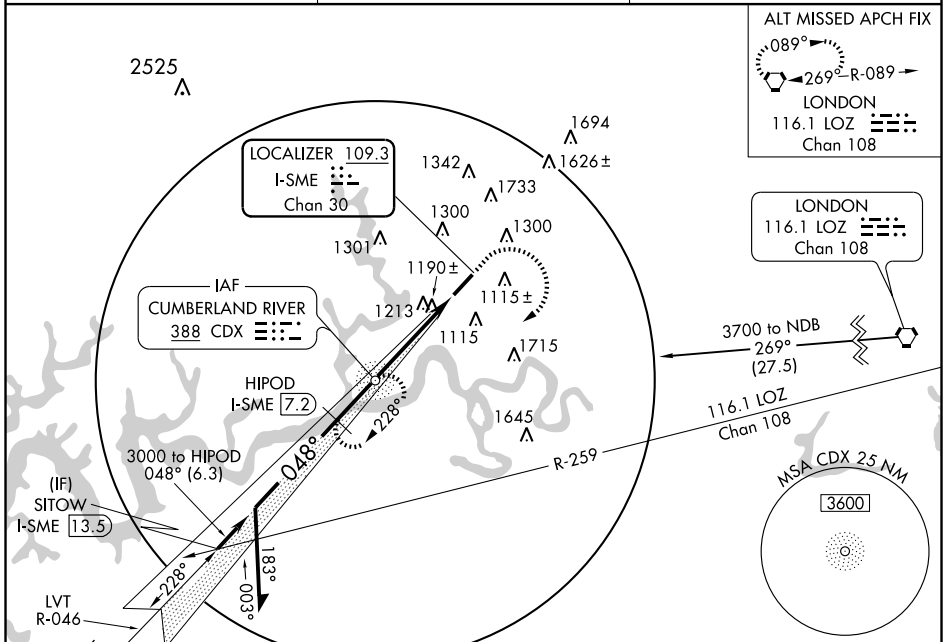
ILS or LOC/DME RWY 5

SOMERSET / LAKE CUMBERLAND RGNL (SME)

ADF Required. Visibility reduction by helicopters NA.
When local altimeter setting not received, use Monticello altimeter setting and increase DA 44 feet and all MDA 60 feet; increase Circling Cat. C visibility ¼ mile.

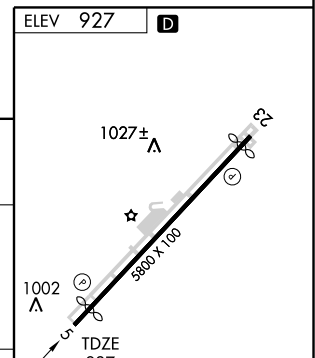
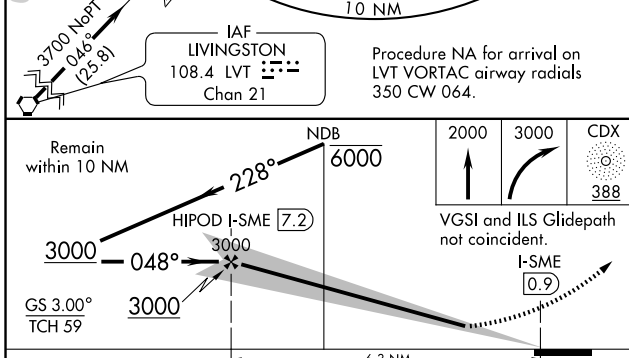
MISSED APPROACH: Climb to 2000 then climbing right turn to 3000 direct CDX NDB and hold, continue climb-in-hold to 3000.

AWOS-3 120.050	INDIANAPOLIS CENTER 124.625 371.925	UNICOM 122.8 (CTAF)
--------------------------	---	-------------------------------



SE-1, 19 NOV 2009 to 17 DEC 2009

SE-1, 19 NOV 2009 to 17 DEC 2009



CATEGORY	A	B	C	D
S-ILS 5	1482-2 555 (600-2)			
S-LOC 5	1460-1	533 (600-1)	1460-1½ 533 (600-1½)	1460-1¾ 533 (600-1¾)
CIRCLING	1620-1 693 (700-1)	1720-1¼ 793 (800-1¼)	1720-2¼ 793 (800-2¼)	1740-2¾ 813 (900-2¾)

ELEV 927 **D**

1027± Δ

1002 Δ

TDZE 927

048° 6.3 NM from FAF

MIRL Rwy 5-23
REIL Rwy 5 and 23

SOMERSET, KENTUCKY
Orig-A 09183

SOMERSET / LAKE CUMBERLAND RGNL (SME)

37°03'N - 84°37'W

ILS or LOC/DME RWY 5