

VOR RWY 1L

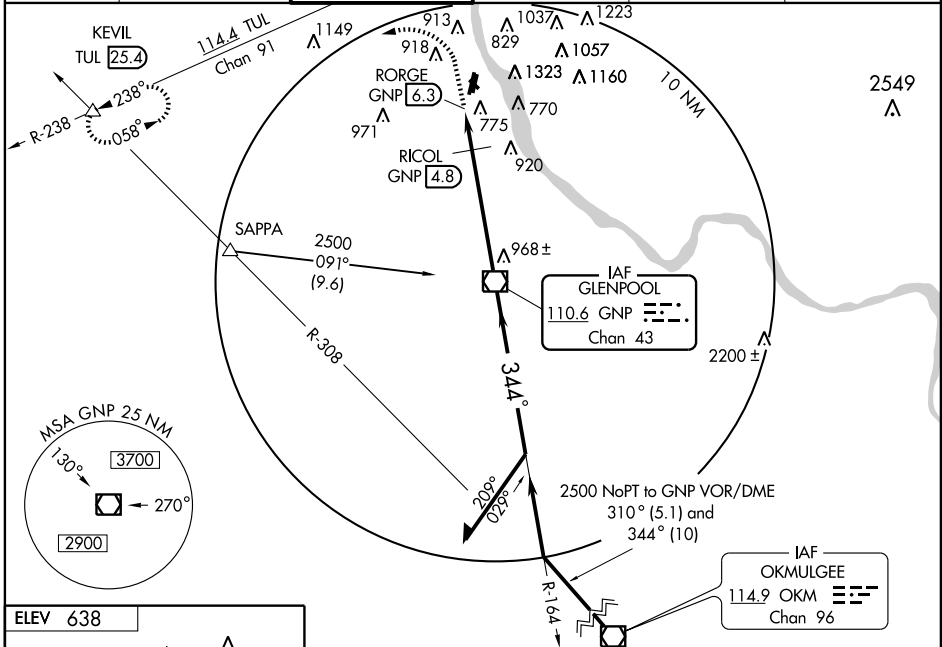
TULSA/ RICHARD LLOYD JONES JR. (RVS)

VOR/DME GNP 110.6 Chan 43	APP CRS 344°	Rwy Idg TDZE Apt Elev	5102 626 638
---	------------------------	-----------------------------	---

⚠ Circling not authorized northeast of Rwy 31 and 19L.
If local altimeter setting not received; use Tulsa Intl altimeter setting and increase all MDAs 40 ft.

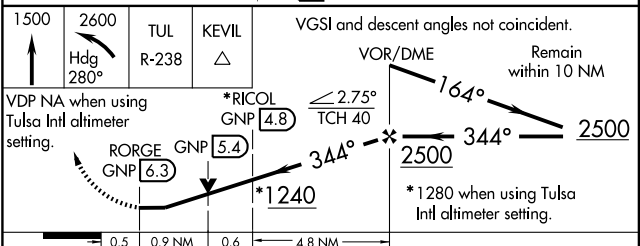
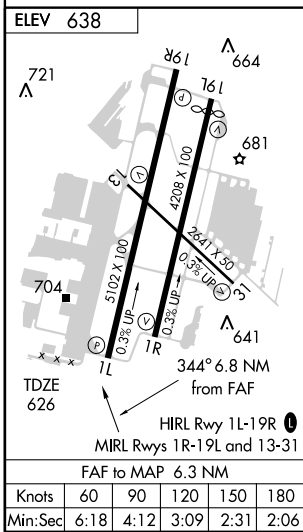
MISSED APPROACH: Climb to 1500 then climbing left turn to 2600 via heading 280° and TUL VORTAC R-238 to KEVIL Int and hold.

ATIS 126.5	TULSA APP CON 119.85	RIVERSIDE TOWER ★ 120.3 (CTAF) 0	GND CON 121.7	CLNC DEL 124.5	UNICOM 122.95
----------------------	--------------------------------	---	-------------------------	--------------------------	-------------------------



SC-1, 19 NOV 2009 to 17 DEC 2009

SC-1, 19 NOV 2009 to 17 DEC 2009



CATEGORY	A	B	C	D
S-1L	1240-1 614 (700-1)	1240-1 3/4 614 (700-1 3/4)	1240-2 614 (700-2)	
CIRCLING	1260-1 622 (700-1)	1280-1 642 (700-1)	1280-1 3/4 642 (700-1 3/4)	1280-2 642 (700-2)
RICOL FIX MINIMUMS				
S-1L	1080-1 454 (500-1)	1080-1 1/4 454 (500-1 1/4)	1080-1 1/2 454 (500-1 1/2)	
CIRCLING	1260-1 622 (700-1)	1280-1 642 (700-1)	1280-1 3/4 642 (700-1 3/4)	1280-2 642 (700-2)