

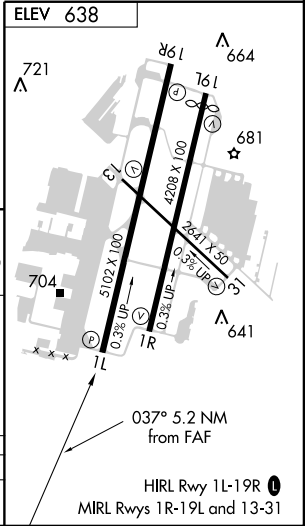
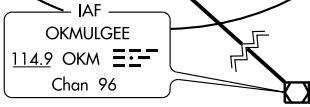
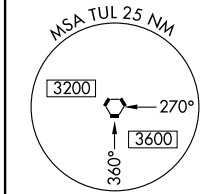
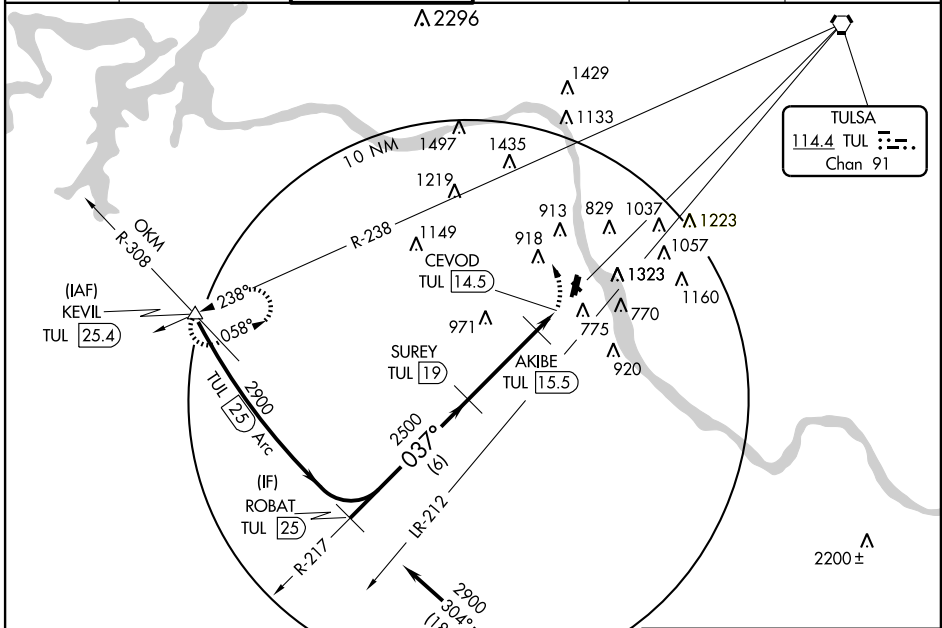
VORTAC TUL 114.4 Chan 91	APP CRS 037°	Rwy Idg TDZE Apt Elev	NA NA 638
--	------------------------	-----------------------------	--------------------------------------

VOR/DME-A
TULSA/RICHARD LLOYD JONES JR. (RVS)

When local altimeter setting not received, use Tulsa Intl altimeter setting and increase MDA 40 feet; increase Cat C/D visibilities ¼ mile. Circling NA northeast of Rwy 31 and 19L.

MISSED APPROACH: Climbing left turn to 2900 via heading 280° and TUL R-238 to KEVIL Int/TUL 25.4 DME and hold.

ATIS 126.5	TULSA APP CON 119.85	RIVERSIDE TOWER* 120.3 (CTAF) 0	GND CON 121.7	CLNC DEL 124.5	UNICOM 122.95
----------------------	--------------------------------	---	-------------------------	--------------------------	-------------------------



Procedure Turn NA	ROBAT TUL [25]	SUREY TUL [19]	AKIBE TUL [15.5]	CEVOD TUL [14.5]
	2900	2500	1400	
	6 NM	3.5 NM	1 NM	0.7 NM
CATEGORY	A	B	C	D
CIRCLING	1260-1 622 (700-1)	1280-1 642 (700-1)	1280-1 ¾ 642 (700-1 ¾)	1280-2 642 (700-2)

SC-1, 11 MAR 2010 to 08 APR 2010

SC-1, 11 MAR 2010 to 08 APR 2010