

VOR/DME SAM 116.6 Chan 113	APP CRS 341°	Rwy Idg TDZE Apt Elev	N/A N/A 482
--	------------------------	-----------------------------	--

VOR/DME or GPS-A

OLNEY-NOBLE (OLY)

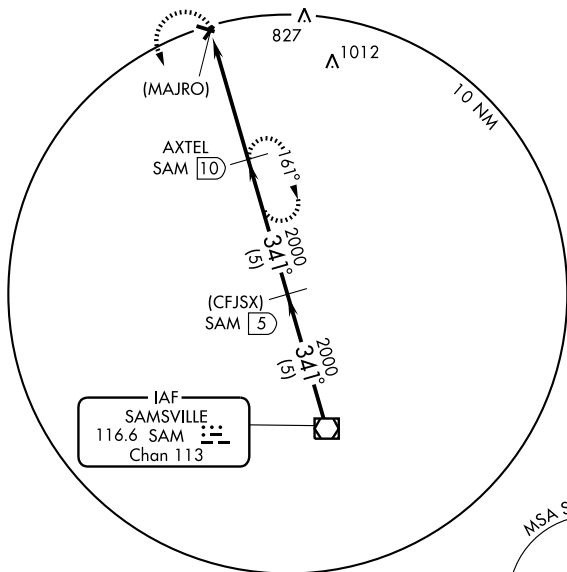
▲ NA Obtain local altimeter setting on CTAF; when not received use Evansville altimeter setting.

MISSED APPROACH: Climbing left turn to 2000 via SAM R-341 to AXTEL 10 DME and hold.

AWOS-3
119.275

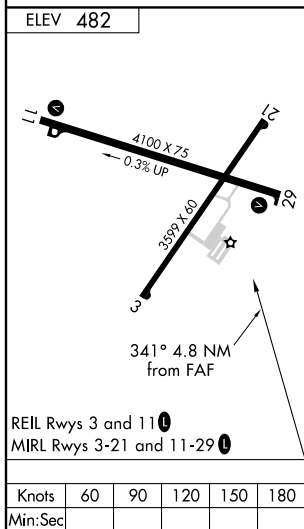
KANSAS CITY CENTER
127.7 317.7

UNICOM
123.0 (CTAF) 0



EC-3, 11 MAR 2010 to 08 APR 2010

EC-3, 11 MAR 2010 to 08 APR 2010



	2000 SAM R-341 116.6	AXTEL SAM 10	AXTEL SAM 10	(CFJSX) SAM 5	VOR/DME
	(MAJRO) SAM 14.8	2000	2000	2000	Procedure Turn NA
	4.8 NM	5 NM	5 NM		
CATEGORY	A	B	C	D	
CIRCLING	940-1	458 (500-1)	940-1½ 458 (500-1½)	1040-2 558 (600-2)	
EVANSVILLE ALTIMETER SETTING MINIMUMS					
CIRCLING	1180-1	698 (700-1)	1180-2 698 (700-2)	1180-2¼ 698 (700-2¼)	