

WACO, TEXAS

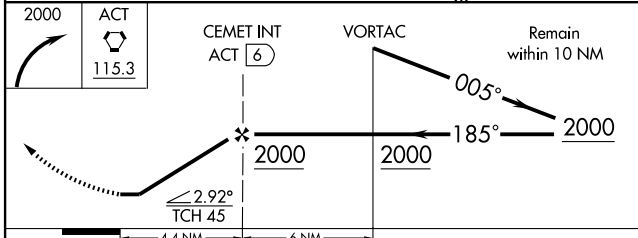
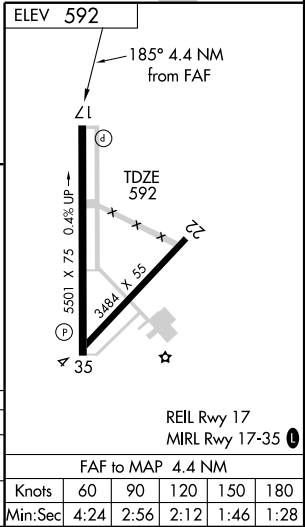
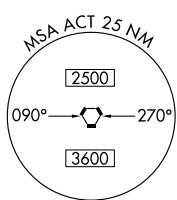
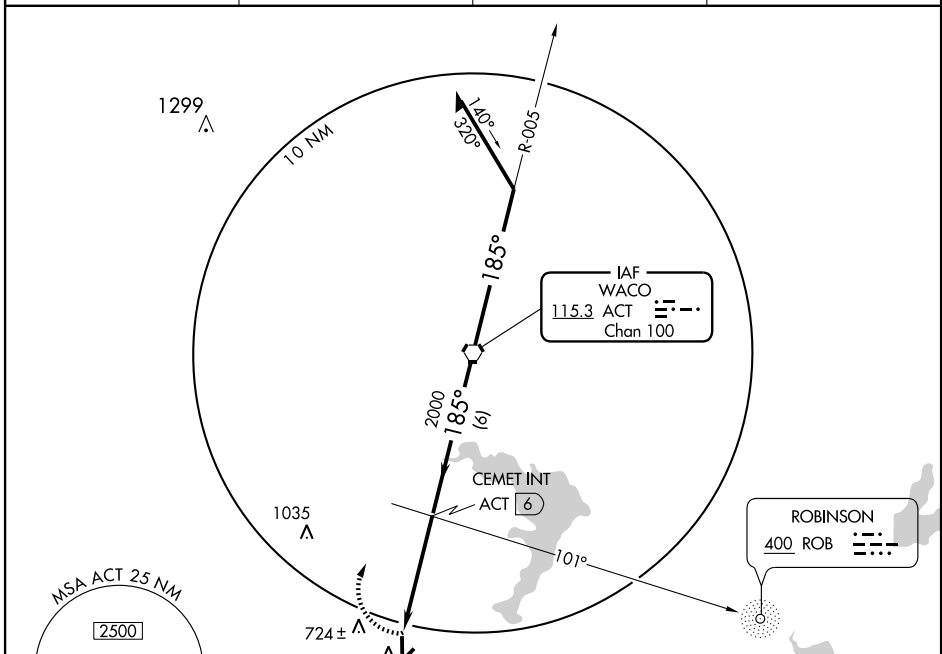
AL-5441 (FAA)

VOR RWY 17

WACO/MC GREGOR EXECUTIVE (PWG)

VORTAC ACT	APP CRS	Rwy Idg	5501
115.3	185°	TDZE	592
Chan 100		Apt Elev	592

DME or ADF required. ASR		MISSED APPROACH: Climbing right turn to 2000 direct ACT VORTAC.	
AWOS-3 135.525	WACO APP CON * 127.65 352.0	GCO 121.725	UNICOM 122.8 (CTAF) 0



CATEGORY	A	B	C	D
S-17	980-1 388 (400-1)			NA
CIRCLING	1040-1 448 (500-1)	1060-1 468 (500-1)	1060-1½ 468 (500-1½)	NA

FAF to MAP 4.4 NM					
Knots	60	90	120	150	180
Min:Sec	4:24	2:56	2:12	1:46	1:28

WACO, TEXAS
Amdt 10C 10042

31°29'N-97°19'W

WACO/MC GREGOR EXECUTIVE (PWG)

VOR RWY 17

SC-3, 11 MAR 2010 to 08 APR 2010

SC-3, 11 MAR 2010 to 08 APR 2010