

WACO, TEXAS

AL-5441 (FAA)

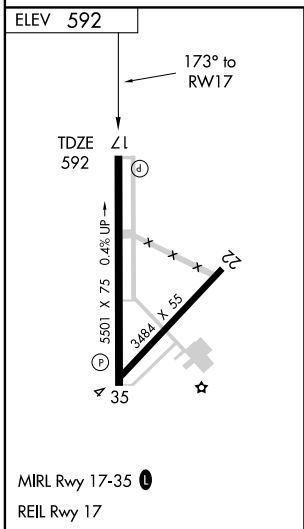
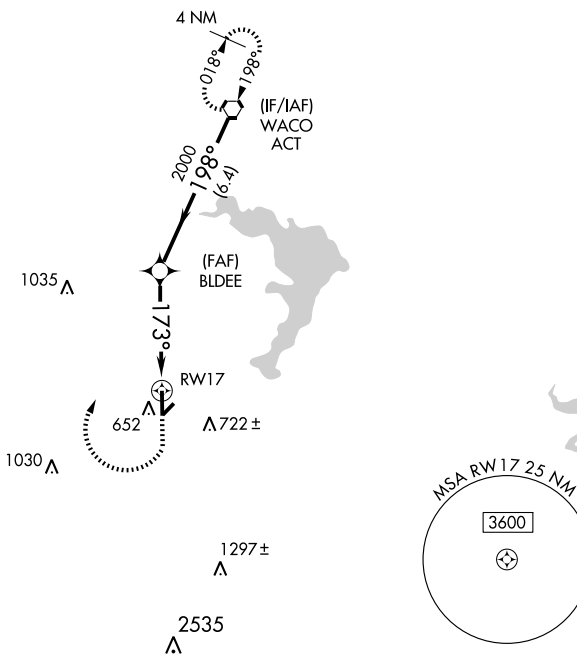
RNAV (GPS) RWY 17

WACO/MC GREGOR EXECUTIVE (PWG)

APP CRS 173°	Rwy ldg TDZE Apt Elev	5501 592 592
------------------------	-----------------------------	---

<p>▽ GPS or RNP-0.3 REQUIRED.</p> <p>△ NA DME/DME RNP-0.3 NA.</p> <p>ASR</p>	<p>MISSED APPROACH: Climb to 1000 then dimbing right turn to 2500 direct ACT VORTAC and hold.</p>
--	---

AWOS-3 135.525	WACO APP CON * 127.65 352.0	GCO 121.725	UNICOM 122.8 (CTAF) 0
--------------------------	---------------------------------------	-----------------------	---------------------------------



	1000	2500	ACT	
	↑	↘	115.3	
VORTAC	2500	BLDEE	1.1 NM to RWY 17	
Procedure Turn NA	2500	2000	173°	
	6.4 NM	3.2 NM	1.1	
CATEGORY	A	B	C	D
LNAV MDA	980-1 388 (400-1)			NA
CIRCLING	1020-1 428 (500-1)	1060-1 468 (500-1)	1060-1½ 468 (500-1½)	NA

WACO, TEXAS
Orig 10042

31°29'N-97°19'W

WACO/MC GREGOR EXECUTIVE (PWG)

RNAV (GPS) RWY 17

SC-3, 11 MAR 2010 to 08 APR 2010

SC-3, 11 MAR 2010 to 08 APR 2010