

MARFA, TEXAS

AL-5443 (FAA)

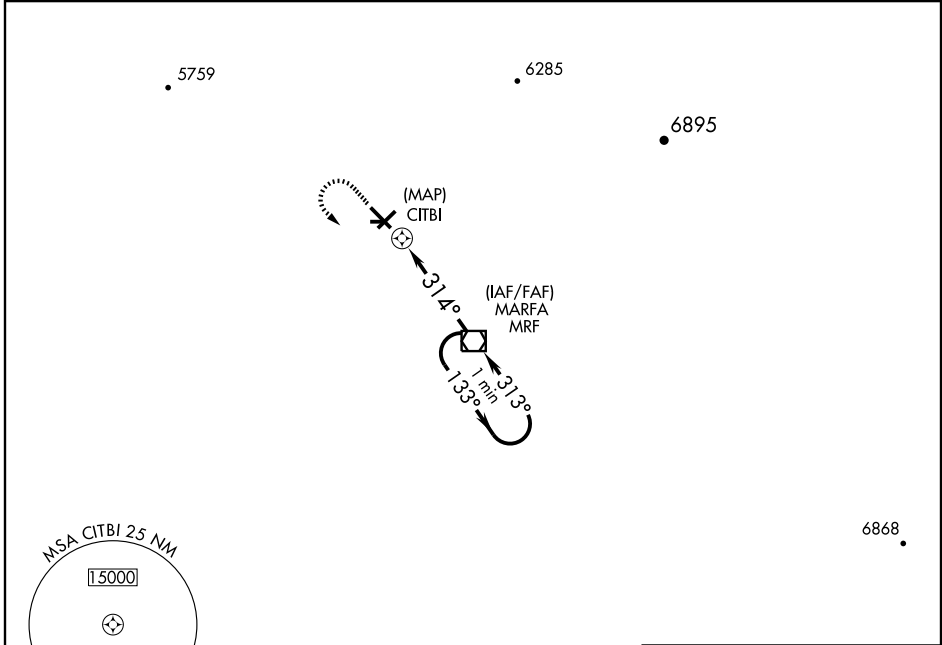
GPS RWY 30

MARFA MUNI (MRF)

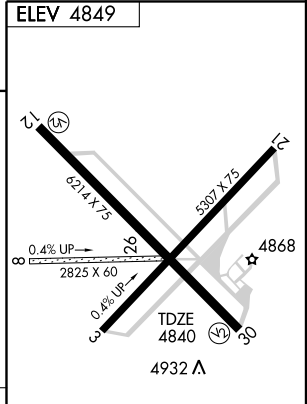
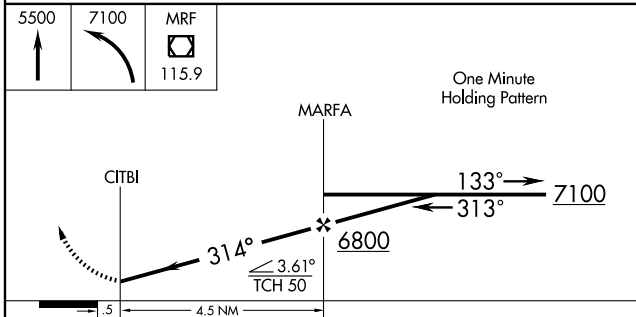
APP CRS 314°	Rwy Idg 6214
	TDZE 4840
	Apt Elev 4849

⚠ If local altimeter setting not received, procedure not authorized. **MISSED APPROACH:** Climb to 5500 then climbing left turn to 7100 direct MRF VOR/DME and hold.

AWOS-3 134.025	ALBUQUERQUE CENTER 135.875 292.15	UNICOM 122.8 (CTAF) 0
--------------------------	---	---------------------------------



5500 ↑	7100 ↙	MRF □ 115.9
-----------	-----------	-------------------



CATEGORY	A	B	C	D
S-30	5200-1	360 (400-1)		5200-1¼ 360 (400-1¼)
CIRCLING	5260-1 411 (500-1)	5300-1 451 (500-1)	5300-1½ 451 (500-1½)	5400-2 551 (600-2)

MIRL Rwy 12-30 0

SC-3, 11 MAR 2010 to 08 APR 2010

SC-3, 11 MAR 2010 to 08 APR 2010

MARFA, TEXAS
Orig-A 08213

30°22'N-104°01'W

MARFA MUNI (MRF)

GPS RWY 30