

PAMPA, TEXAS

AL-5450 (FAA)

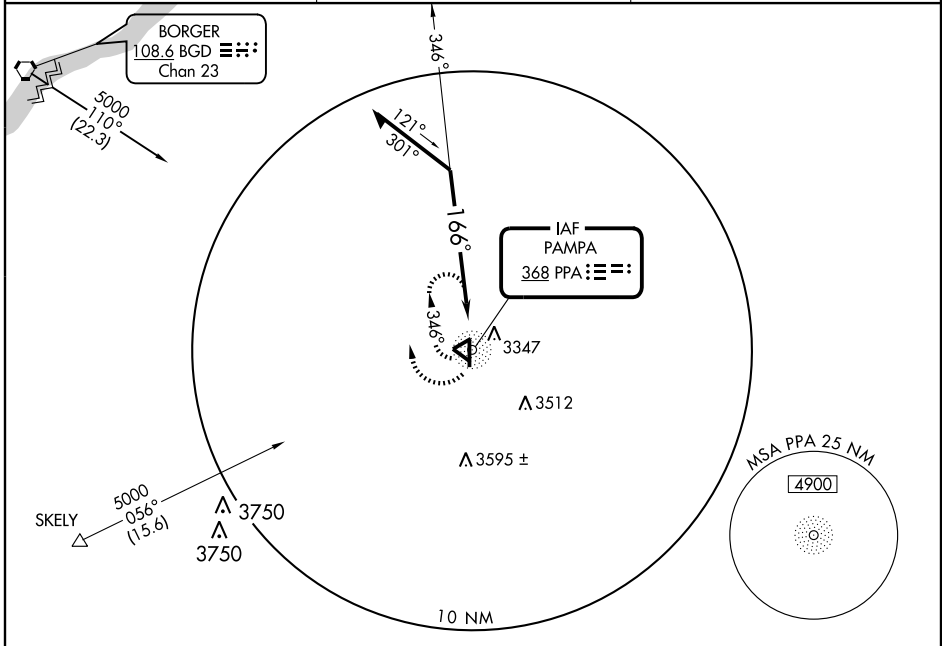
NDB RWY 17

PAMPA/ PERRY LEFORS FIELD (PPA)

NDB PPA 368	APP CRS 166°	Rwy Idg TDZE Apt Elev	5862 3244 3245
-----------------------	------------------------	-----------------------------	---

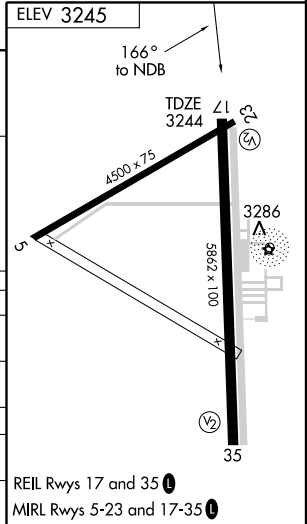
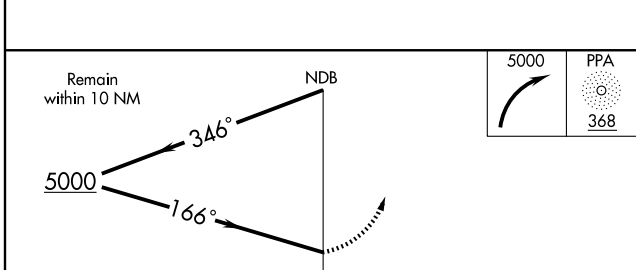
▲ NA Obtain local altimeter setting on CTAF; when not received, use Borger altimeter setting. MISSED APPROACH: Climbing right turn to 5000 in PPA NDB holding pattern.

AWOS-3 118.725	ALBUQUERQUE CENTER 127.85 285.475	UNICOM 122.7 (CTAF) 0
--------------------------	---	---------------------------------



SC-2, 11 MAR 2010 to 08 APR 2010

SC-2, 11 MAR 2010 to 08 APR 2010



CATEGORY	A	B	C	D
S-17	3700-1	456 (500-1)	3700-1¼ 456 (500-1¼)	3700-1½ 456 (500-1½)
CIRCLING	3700-1	455 (500-1)	3700-1½ 455 (500-1½)	3800-2 555 (600-2)
BORGER ALTIMETER SETTINGS MINIMUMS				
S-17	3780-1	536 (600-1)	3780-1½ 536 (600-1½)	3780-1¾ 536 (600-1¾)
CIRCLING	3780-1	535 (600-1)	3780-1½ 535 (600-1½)	3800-2 555 (600-2)

REIL Rwy 17 and 35 0
MIRL Rwy 5-23 and 17-35 0

PAMPA, TEXAS
Amdt 4A 08325

35°37'N-101°00'W

PAMPA/ PERRY LEFORS FIELD (PPA)

NDB RWY 17