

VOR/DME-A

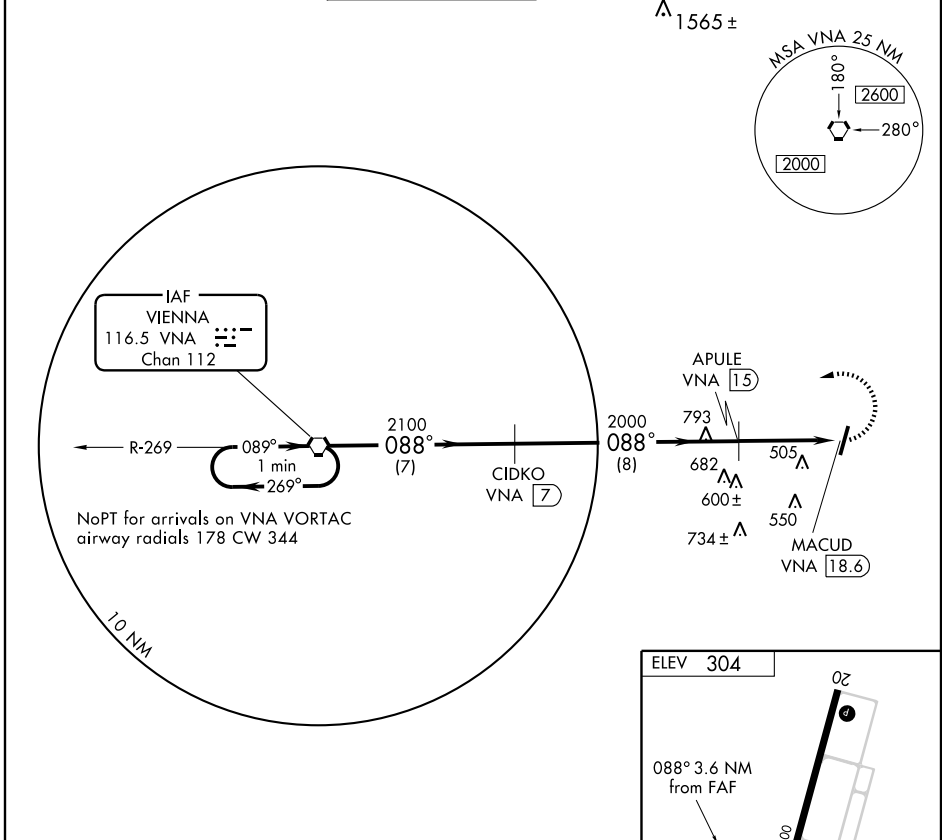
EASTMAN/HEART OF GEORGIA RGNL (E2M)

VORTAC VNA 116.5 Chan 112	APP CRS 088°	Rwy Idg TDZE Apt Elev	N/A N/A 304
---	------------------------	-----------------------------	--

▼ When local altimeter setting not received, use Dublin altimeter setting and increase all MDAs 60 feet.
▲ NA

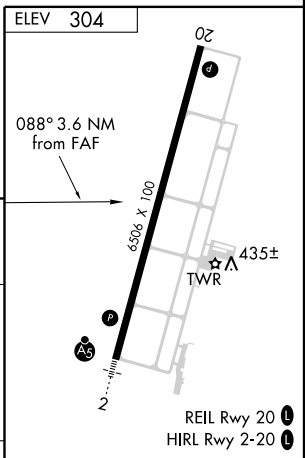
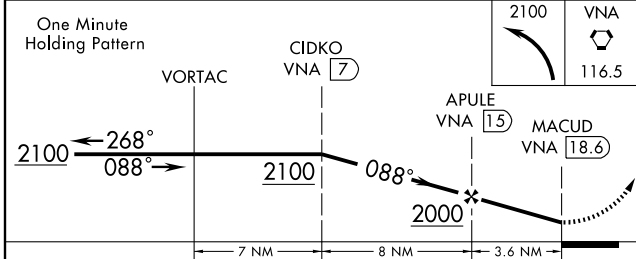
MISSED APPROACH: Climbing left turn to 2100 direct VNA VORTAC and hold.

ATIS 119.425	ATLANTA APP CON * 124.2 279.6	EASTMAN TOWER * 124.55 (CTAF) 0	GND CON 121.175	GCO 121.725	UNICOM 123.0
------------------------	---	--	---------------------------	-----------------------	------------------------



SE-4, 11 MAR 2010 to 08 APR 2010

SE-4, 11 MAR 2010 to 08 APR 2010



CATEGORY	CIRCLING				Knots	60	90	120	150	180
	A	B	C	D						
	760-1 456 (500-1)	820-1 516 (600-1)	820-1½ 516 (600-1½)	860-2 556 (600-2)	Min:Sec					