

RNAV (GPS) RWY 17

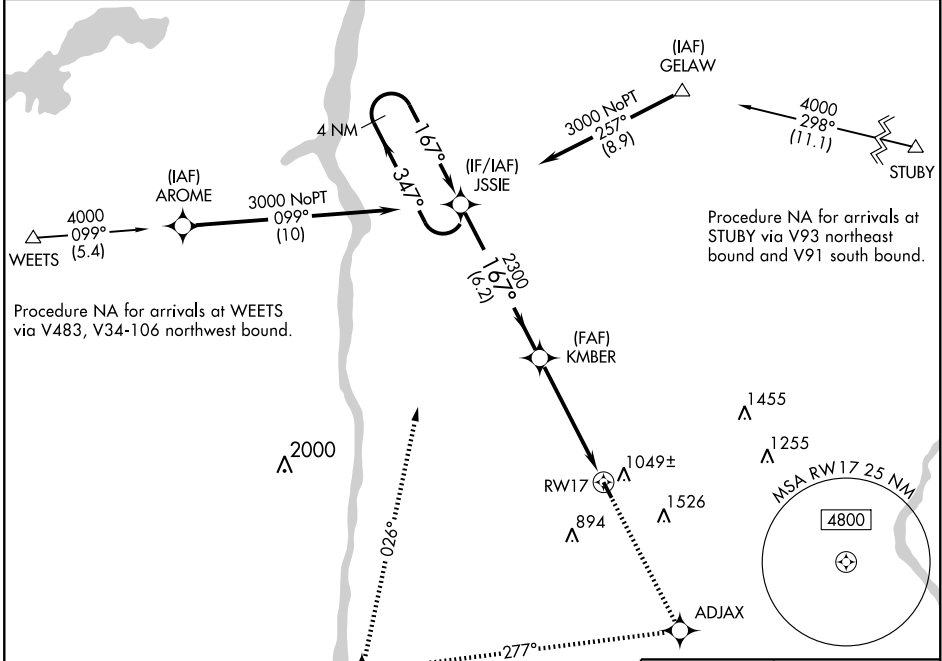
MILLBROOK/ SKY ACRES (44N)

WAAS CH 78008 W 17A	APP CRS 167°	Rwy Ldg TDZE 694 Apt Elev 698	3830
---	------------------------	---	-------------

⚠ DME/DME RNP-0.3 NA. Use Newburgh altimeter setting; when not received use Poughkeepsie altimeter setting and increase LPV DA to 1038, all MDA 20 feet, and LPV all Cats visibility ¼ mile.

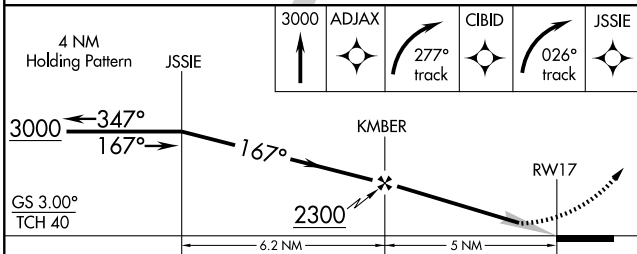
MISSED APPROACH: Climb to 3000 direct ADJAX and right turn via 277° track to CIBID and right turn via 026° track to JSSIE and hold.

POUGHKEEPSIE ASOS 126.75	NEW YORK APP CON 132.75 363.1	UNICOM 122.8 (CTAF) 0
------------------------------------	---	---------------------------------



NE-2, 19 NOV 2009 to 17 DEC 2009

NE-2, 19 NOV 2009 to 17 DEC 2009



CATEGORY	A	B	C	D
LPV DA	1021-1¼	327 (400-1¼)		NA
LNAV MDA	1620-1¼	926 (1000-1¼)		NA
CIRCLING	1620-1¼	922 (1000-1¼)		NA

