

MILLBROOK, NEW YORK

AL-5473 (FAA)

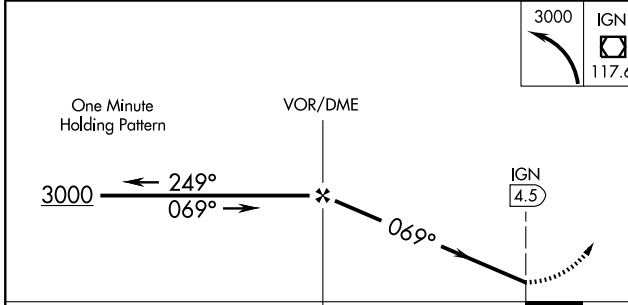
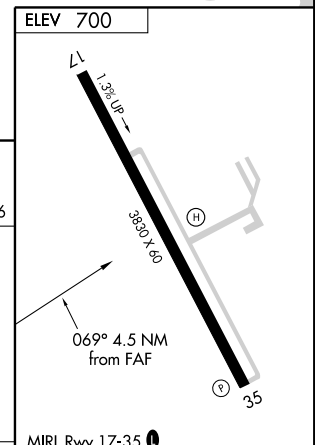
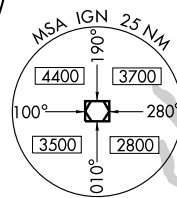
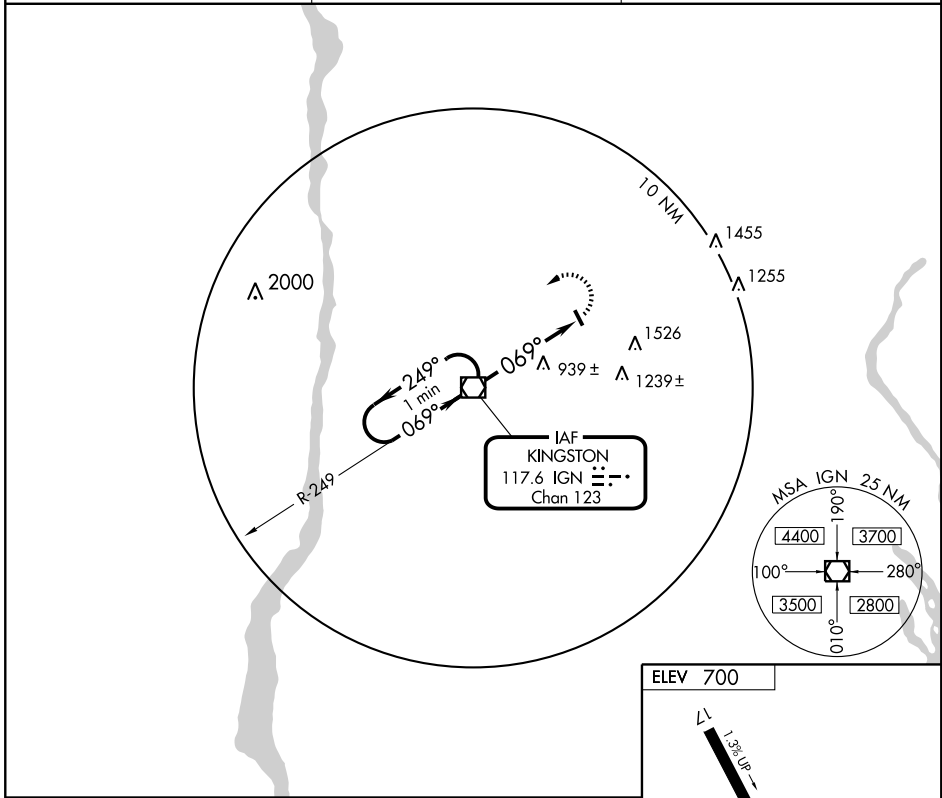
VOR-A

MILLBROOK/ SKY ACRES (44N)

APP CRS <b>069°</b>	Rwy Idg TDZE Apt Elev	<b>N/A</b> <b>N/A</b> <b>700</b>
------------------------	-----------------------------	--

<b>▽</b> Use Poughkeepsie altimeter setting. NoPT for arrival on IGN VOR/DME airway radials 203 CW 316.	MISSED APPROACH: Climbing left turn to 3000 direct IGN VOR/DME and hold.
---	---

POUGHKEEPSIE ASOS <b>126.75</b>	NEW YORK APP CON <b>132.75 363.1</b>	UNICOM <b>122.8 (CTAF) 0</b>
------------------------------------	---	---------------------------------



CATEGORY	A	B	C	D	FAF to MAP 4.5 NM					
CIRCLING	1580 - 1 880 (900-1)	1580 - 1¼ 880 (900-1¼)		NA	Knots	60	90	120	150	180
					Min:Sec	4:30	3:00	2:15	1:48	1:30

MILLBROOK, NEW YORK

Amdt 8 08101

MILLBROOK/ SKY ACRES (44N)

41°42'N - 73°44'W

VOR-A

NE-2, 19 NOV 2009 to 17 DEC 2009

NE-2, 19 NOV 2009 to 17 DEC 2009