

MILLBROOK, NEW YORK

AL-5473 (FAA)

RNAV (GPS) RWY 35

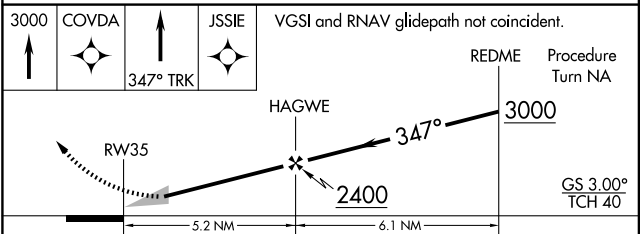
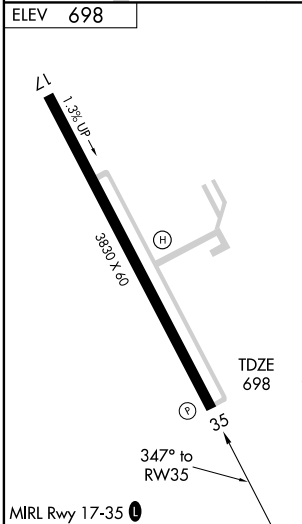
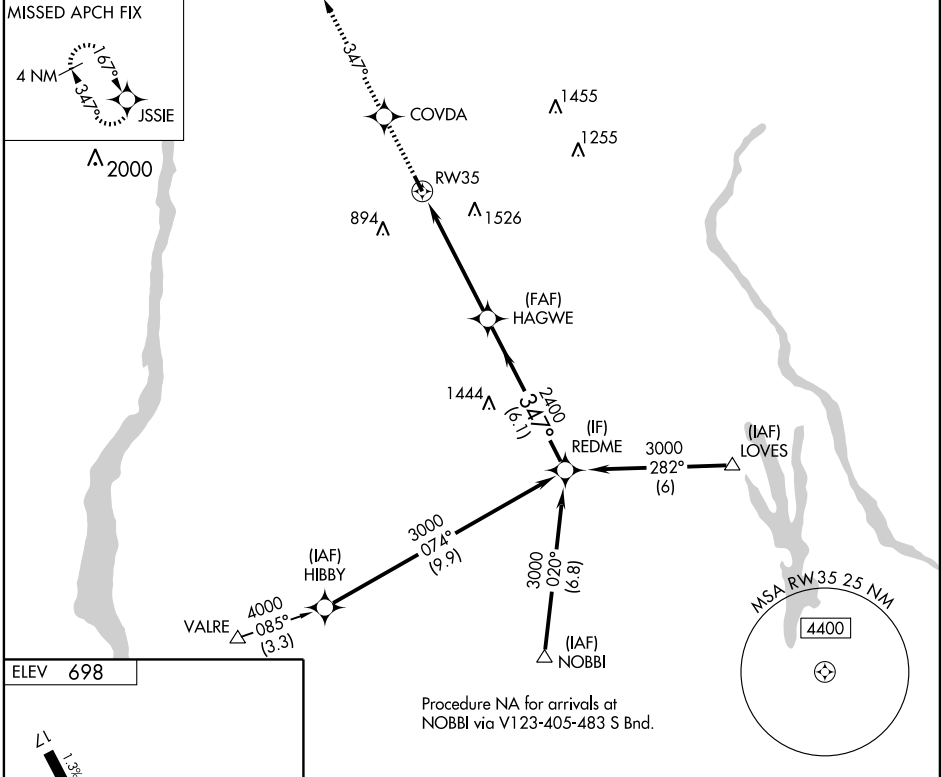
MILLBROOK/ SKY ACRES (44N)

WAAS CH 86308 W35A	APP CRS 347°	Rwy ldg TDZE Apt Elev	3830 698 698
---------------------------------	------------------------	-----------------------------	-----------------------------------------

NA DME/DME RNP-0.3 NA. Use Newburgh altimeter setting; when not received use Poughkeepsie altimeter setting and increase LPV DA to 1063, and all MDA 20 feet.

MISSED APPROACH: Climb to 3000 direct COVDA and via 347° track to JSSIE and hold.

POUGHKEEPSIE ASOS 126.75	NEW YORK APP CON 132.75 363.1	UNICOM 122.8 (CTAF)
------------------------------------	-----------------------------------------	-------------------------------



CATEGORY	A	B	C	D
LPV DA	1046-1¼	348 (400-1¼)		NA
LNAV MDA	1700-1¼ 1002 (1100-1¼)	1700-1½ 1002 (1100-1½)		NA
CIRCLING	1700-1¼ 1002 (1100-1¼)	1700-1½ 1002 (1100-1½)		NA

MILLBROOK, NEW YORK
Amdt 1 08213

41°42'N - 73°44'W

RNAV (GPS) RWY 35

NE-2, 19 NOV 2009 to 17 DEC 2009

NE-2, 19 NOV 2009 to 17 DEC 2009