

MILLBROOK, NEW YORK

AL-5473 (FAA)

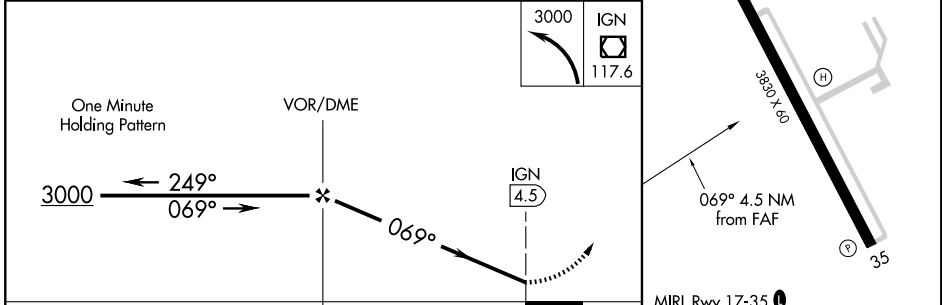
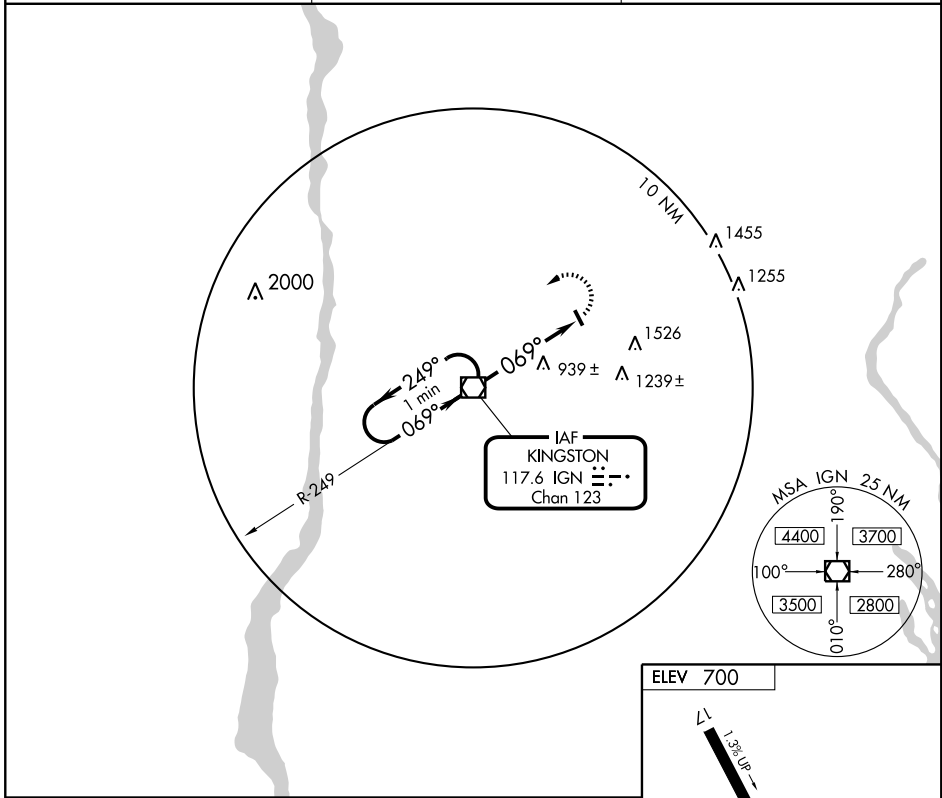
VOR-A

MILLBROOK/ SKY ACRES (44N)

APP CRS 069°	Rwy Idg TDZE Apt Elev	N/A N/A 700
------------------------	-----------------------------	--

▽ Use Poughkeepsie altimeter setting. NoPT for arrival on IGN VOR/DME airway radials 203 CW 316.	MISSED APPROACH: Climbing left turn to 3000 direct IGN VOR/DME and hold.
---	---

POUGHKEEPSIE ASOS 126.75	NEW YORK APP CON 132.75 363.1	UNICOM 122.8 (CTAF) 0
------------------------------------	---	---------------------------------



CATEGORY	A	B	C	D	FAF to MAP 4.5 NM					
CIRCLING	1580 - 1 880 (900-1)	1580 - 1¼ 880 (900-1¼)		NA	Knots	60	90	120	150	180
					Min:Sec	4:30	3:00	2:15	1:48	1:30

MILLBROOK, NEW YORK

Amdt 8 08101

41°42'N - 73°44'W

MILLBROOK/ SKY ACRES (44N)

VOR-A

NE-2, 11 MAR 2010 to 08 APR 2010

NE-2, 11 MAR 2010 to 08 APR 2010