

# RNAV (GPS) RWY 34

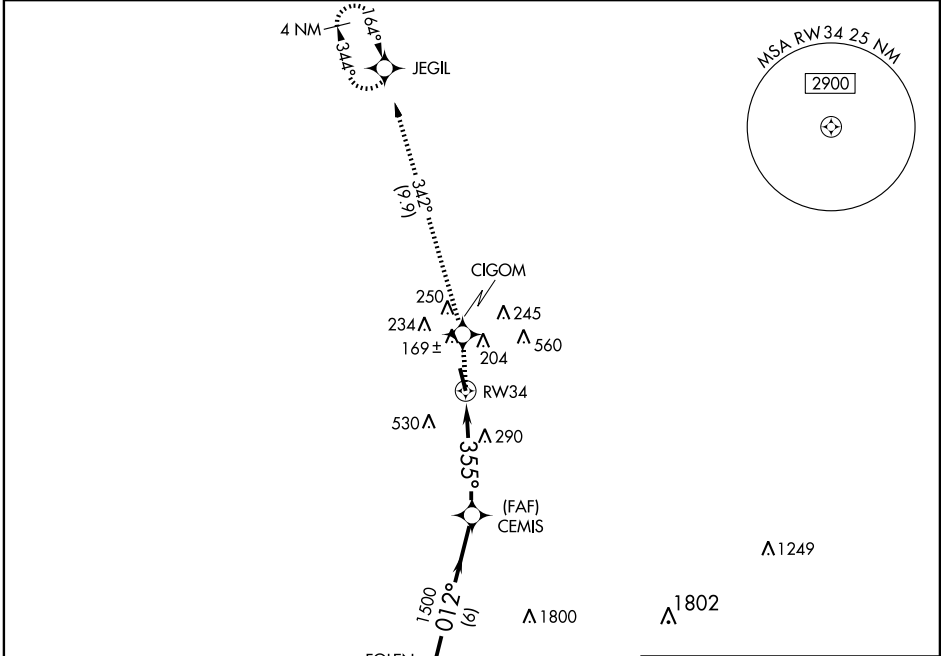
EUNICE (4R7)

APP CRS <b>355°</b>	Rwy Idg <b>5001</b>
	TDZE <b>42</b>
	Apt Elev <b>42</b>

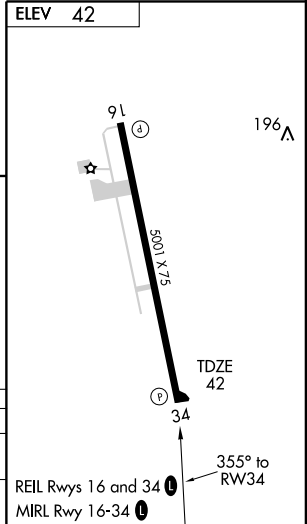
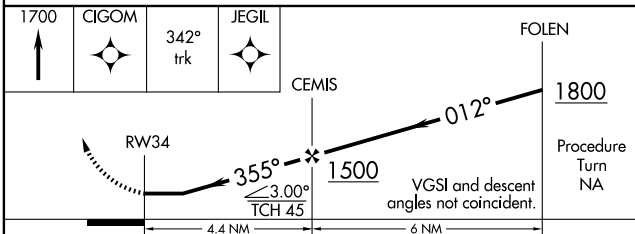
**▼** Use Lafayette Rgnl altimeter setting.  
**▲ NA** GPS or RNP-0.3 Required. DME/DME RNP-0.3 NA.  
 When VGSI inoperative, circling Rwy 16 NA at night.

**MISSED APPROACH:** Climb to 1700 direct CIGOM WP and via 342° track to JEGIL WP and hold.

LAFAYETTE APP CON ★ <b>128.7 268.7</b>	GCO <b>135.075</b>	UNICOM <b>122.8 (CTAF) 0</b>
---	-----------------------	---------------------------------



Procedure NA for arrival at CRISP via V20-70 westbound.



CATEGORY	A	B	C	D
RNAV MDA	660-1 618 (700-1)		660-1¼ 618 (700-1¾)	NA
CIRCLING	660-1 618 (700-1)		660-1¼ 618 (700-1¾)	NA

SC-4, 19 NOV 2009 to 17 DEC 2009

SC-4, 19 NOV 2009 to 17 DEC 2009