

EUNICE, LOUISIANA

AL-5524 (FAA)

# VOR/DME-A

EUNICE (4R7)

VORTAC LFT <b>109.8</b> Chan 35	APP CRS <b>303°</b>	Rwy Idg TDZE Apt Elev	<b>N/A</b> <b>N/A</b> <b>42</b>
---------------------------------------	------------------------	-----------------------------	---------------------------------------

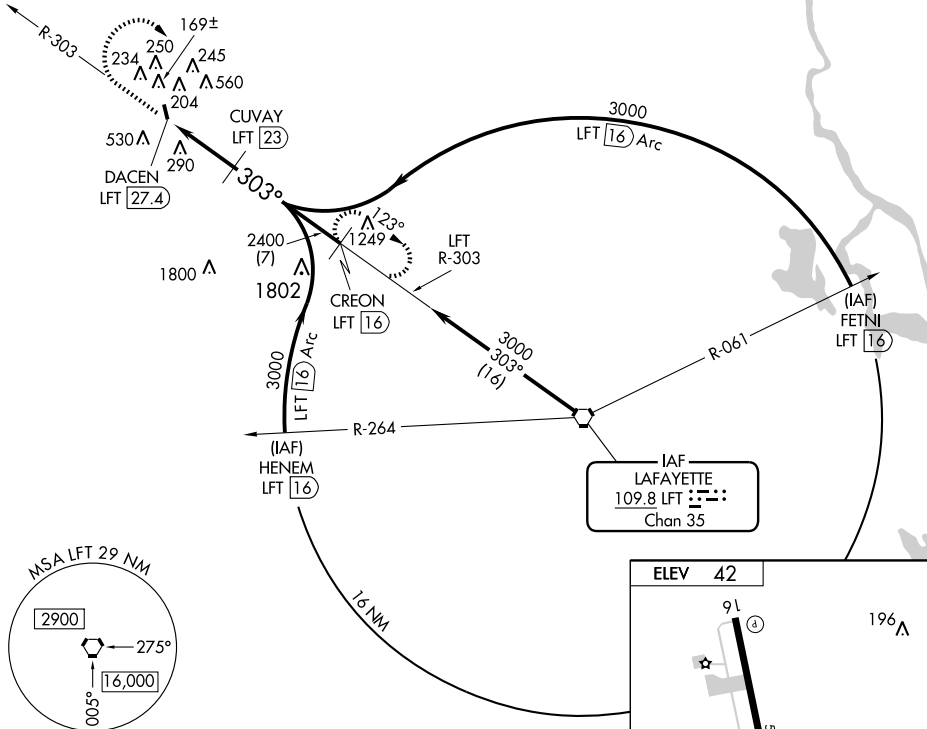
Use Lafayette Rgnl altimeter setting.  
NA

MISSED APPROACH: Climb to 1000 then climbing right turn to 3000 via LFT R-303 to CREON/LFT 16 DME and hold.

LAFAYETTE APP CON ★  
**128.7 268.7**

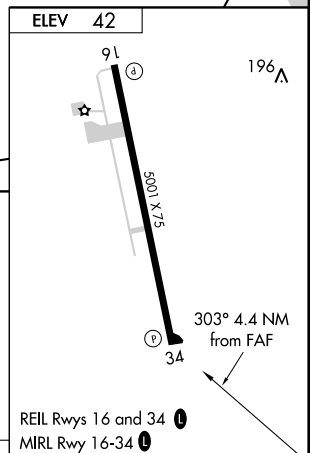
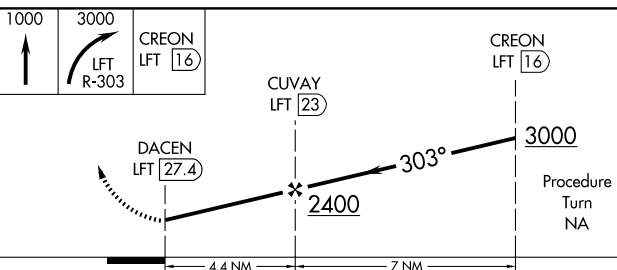
GCO  
**135.075**

UNICOM  
**122.8 (CTAF) 0**



SC-4, 19 NOV 2009 to 17 DEC 2009

SC-4, 19 NOV 2009 to 17 DEC 2009



CATEGORY	A	B	C	D	Knots	60	90	120	150	180
CIRCLING	800-1 758 (800-1)	800-1¼ 758 (800-1¼)	800-2¼ 758 (800-2¼)	NA	Min:Sec					

EUNICE, LOUISIANA  
Amdt 3 09295

30°28'N-92°25'W

# VOR/DME-A

EUNICE (4R7)