

RNAV (GPS) RWY 16

EUNICE (4R7)

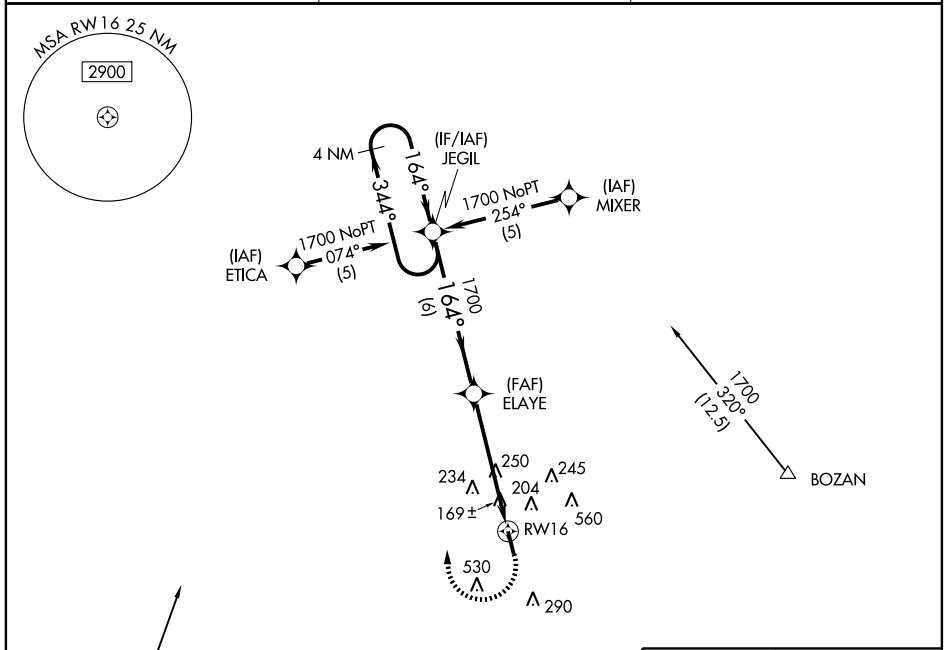
APP CRS 164°	Rwy Idg 5001
	TDZE 40
	Apt Elev 42

▼ Use Lafayette Rgnl altimeter setting.
GPS or RNP-0.3 Required. DME/DME RNP-0.3 NA.

▲ NA When VGSi inoperative, procedure NA at night.

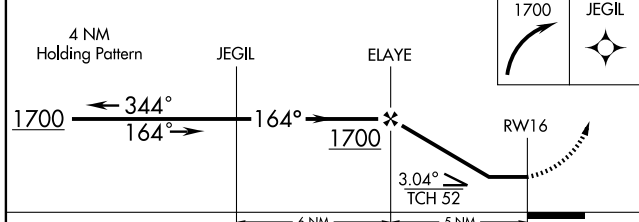
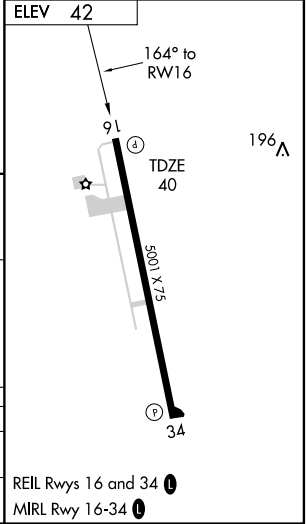
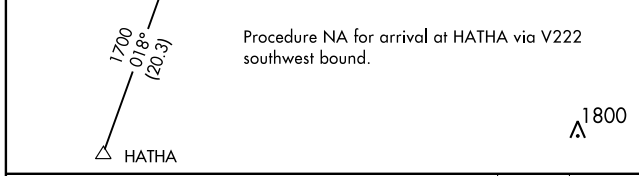
MISSED APPROACH: Climbing right turn to 1700 direct JEGIL WP and hold.

LAFAYETTE APP CON ★ 128.7 268.7	GGC 135.075	UNICOM 122.8 (CTAF) 0
---	-----------------------	---------------------------------



SC-4, 11 MAR 2010 to 08 APR 2010

SC-4, 11 MAR 2010 to 08 APR 2010



CATEGORY	A	B	C	D
LNAV MDA	580-1	540 (600-1)	580-1½ 540 (600-1½)	NA
CIRCLING	620-1	578 (600-1)	620-1½ 578 (600-1½)	NA

REIL Rwy 16 and 34 0
MIRL Rwy 16-34 0