

UNION CITY, TENNESSEE

AL-5525 (FAA)

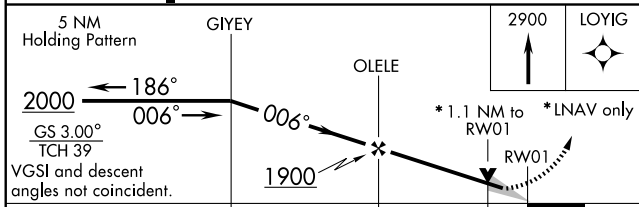
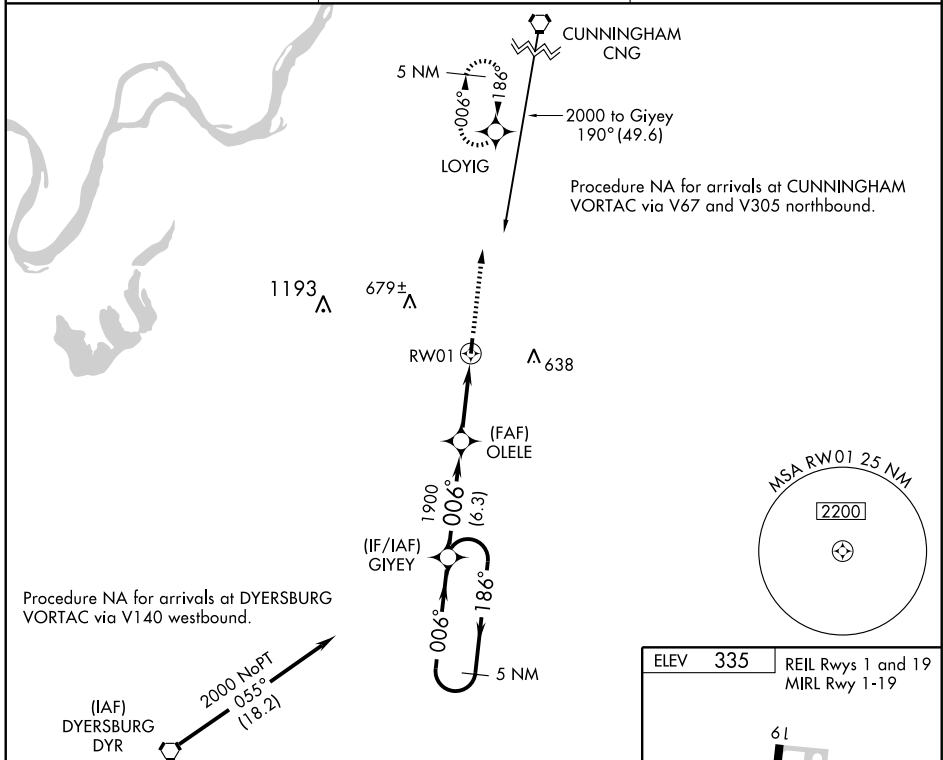
WAAS CH 40099 W01A	APP CRS 006°	Rwy ldg 5000 TDZE 335 Apt Elev 335
--	------------------------	---

RNAV (GPS) RWY 1

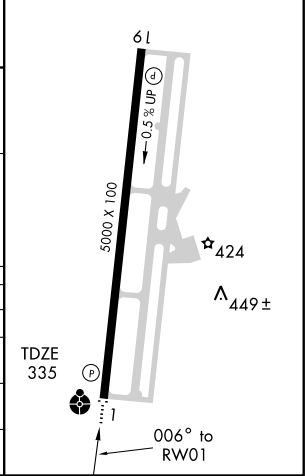
UNION CITY/EVERETT-STEWART RGNL (UCY)

<p>▼ DME/DME RNP-0.3 NA. Inoperative table does not apply to LPV. ▲ If local altimeter setting not received, use Dyersburg Rgnl altimeter setting and increase all DA/MDAs 80 feet. VDP NA with Dyersburg Rgnl altimeter setting.</p>	<p>ODALS </p>	<p>MISSED APPROACH: Climb to 2900 direct LOYIG and hold.</p>
---	-------------------	--

AWOS-3 135.325	MEMPHIS CENTER 133.65 292.15	UNICOM 122.7 (CTAF) 0
--------------------------	--	---------------------------------



ELEV 335	REIL Rws 1 and 19 MIRL Rwy 1-19
----------	------------------------------------



CATEGORY	A	B	C	D
LPV DA		585-¾	250 (300-¾)	
LNAV/VNAV DA		NA		
LNAV MDA	700-¾	365 (400-¾)		700-1¼ 365 (400-1¼)
CIRCLING	760-1 425 (500-1)	800-1 465 (500-1)	800-1½ 465 (500-1½)	900-2 565 (600-2)

UNION CITY, TENNESSEE
Orig 08101

36° 23' N - 88° 59' W

UNION CITY/EVERETT-STEWART RGNL (UCY)

RNAV (GPS) RWY 1

SE-1, 19 NOV 2009 to 17 DEC 2009

SE-1, 19 NOV 2009 to 17 DEC 2009