

RNAV (GPS) RWY 19

UNION CITY/EVERETT-STEWART RGNL (UCY)

APP CRS 186°	Rwy Idg 5000
	TDZE 320
	Apt Elev 335

▼ Procedure NA at night. DME/DME RNP-0.3 NA. If local altimeter setting not received, use Dyersburg Rgnl altimeter setting and increase all MDAs 80 feet. VDP NA with Dyersburg Rgnl altimeter setting.

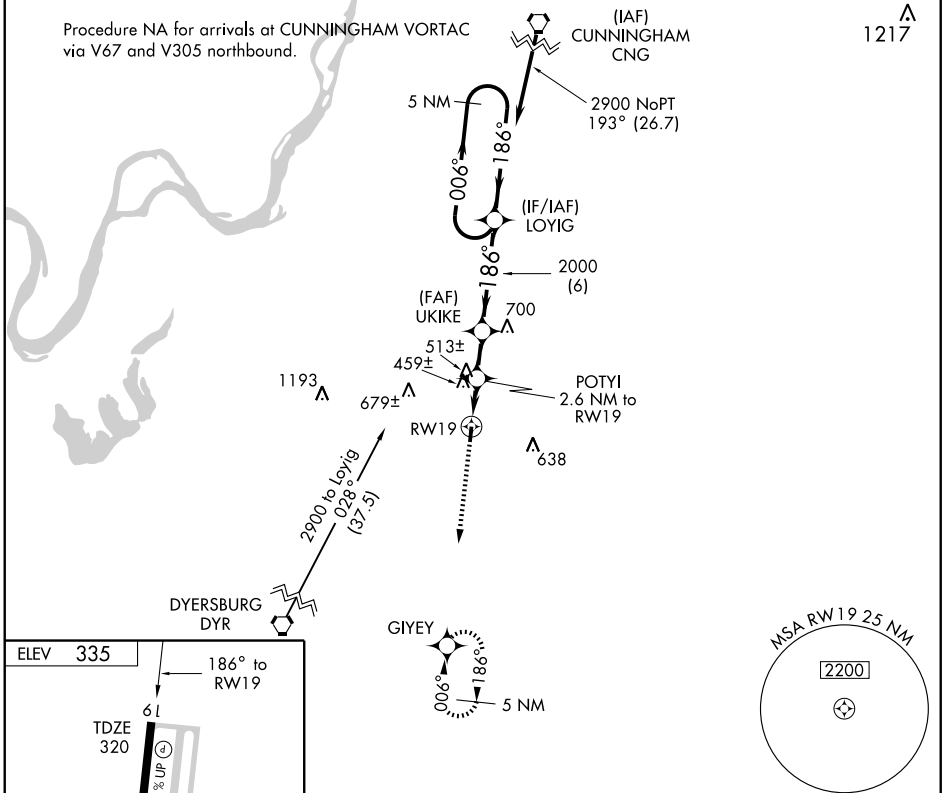
MISSED APPROACH: Climb to 2000 direct GIYEV and hold.

AWOS-3
135.325

MEMPHIS CENTER
133.65 292.15

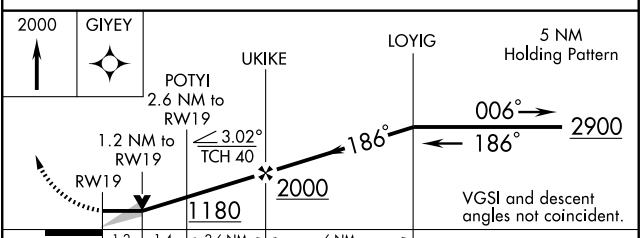
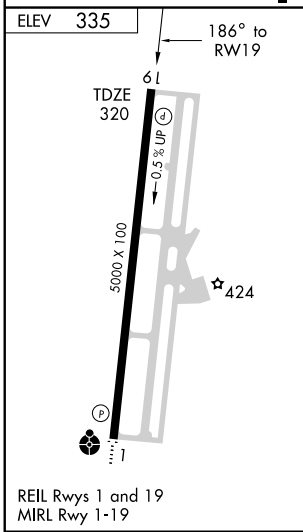
UNICOM
122.7 (CTAF) 0

Procedure NA for arrivals at CUNNINGHAM VORTAC via V67 and V305 northbound.



SE-1, 19 NOV 2009 to 17 DEC 2009

SE-1, 19 NOV 2009 to 17 DEC 2009



CATEGORY	A	B	C	D
LNAV MDA	720-1 400 (400-1)			720-1¼ 400 (400-1¼)
CIRCLING	760-1 425 (500-1)	800-1 465 (500-1)	800-1½ 465 (500-1½)	900-2 565 (600-2)