

BARDSTOWN, KENTUCKY

AL-5539 (FAA)

VOR/DME EWO <b>110.8</b> Chan <b>45</b>	APP CRS <b>036°</b>	Rwy Idg TDZE Apt Elev	<b>N/A</b> <b>N/A</b> <b>669</b>
---	------------------------	-----------------------------	--

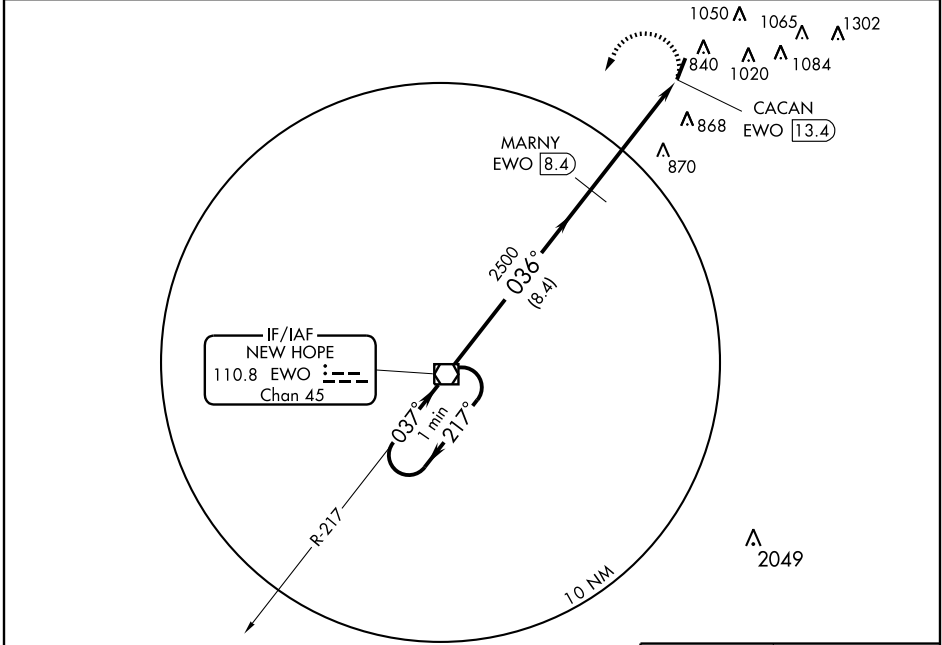
# VOR/DME-A

BARDSTOWN/SAMUELS FIELD (BRY)

**NA** When local altimeter setting not received, use Louisville Intl altimeter setting and increase all MDAs 80 feet, increase Cat C visibility 1/2 mile and Cat D visibility 1/4 mile.

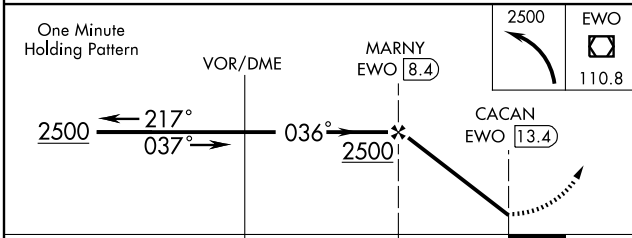
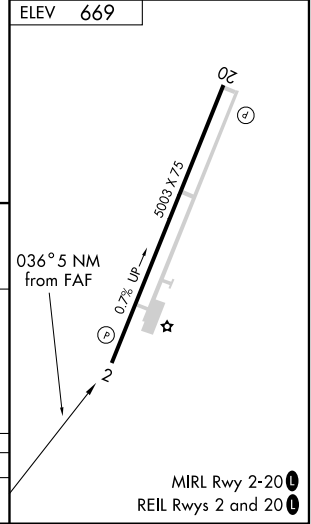
**MISSED APPROACH:** Climbing left turn to 2500 direct EWO VOR/DME and hold.

AWOS-3 <b>119.925</b>	LOUISVILLE APP CON <b>132.075 327.0</b>	UNICOM <b>122.8 (CTAF)</b>
--------------------------	--	-------------------------------



SE-1, 11 MAR 2010 to 08 APR 2010

SE-1, 11 MAR 2010 to 08 APR 2010



CATEGORY	A	B	C	D
CIRCLING	1200-1 531 (600-1)	1260-1 591 (600-1)	1260-1 1/2 591 (600-1 1/2)	1380-2 1/4 711 (800-2 1/4)

BARDSTOWN, KENTUCKY  
Orig-A 10042

37°49'N-85°30'W

BARDSTOWN/SAMUELS FIELD (BRY)  
**VOR/DME-A**

MIRL Rwy 2-20  
REIL Rws 2 and 20