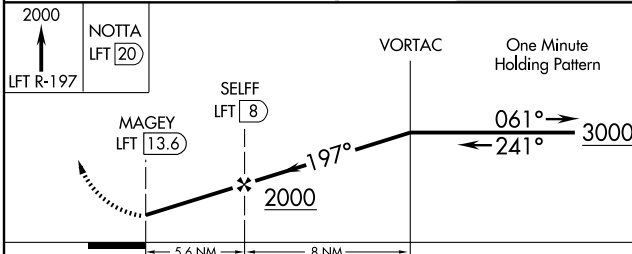
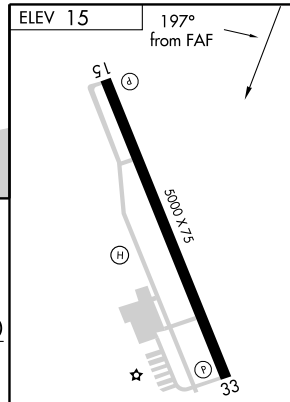
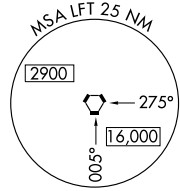
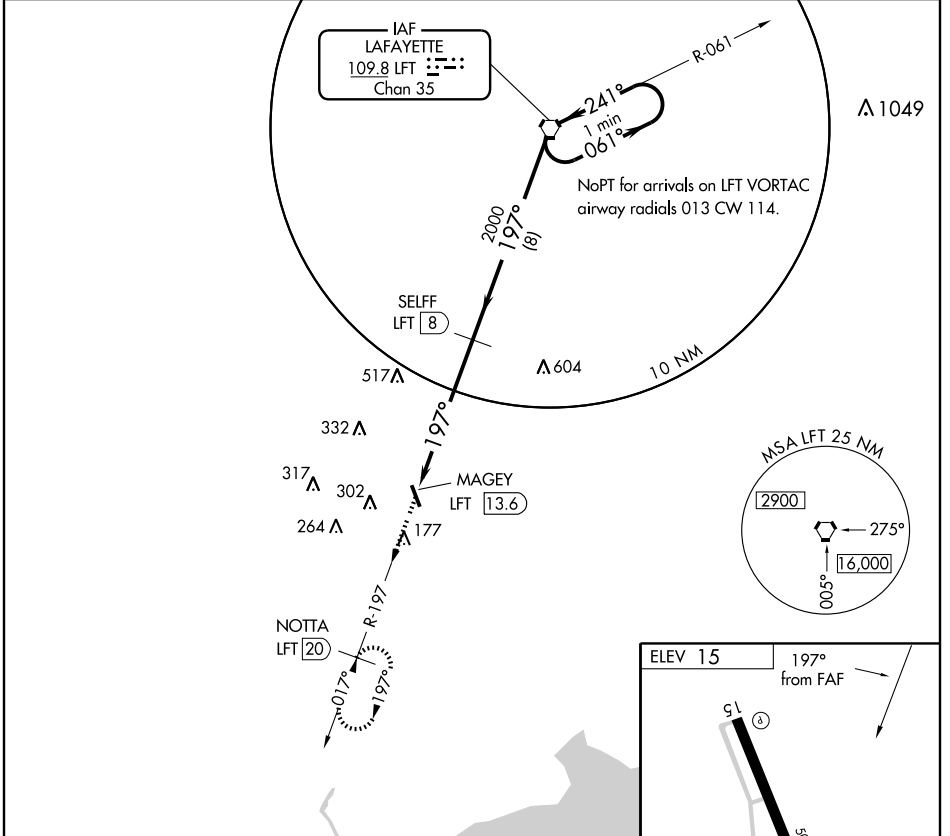


VORTAC LFT 109.8 Chan 35	APP CRS 197°	Rwy Idg TDZE Apt Elev	N/A N/A 15
--	------------------------	-----------------------------	---------------------------------------

NA Use Lafayette Rgnl altimeter setting; if not received, use Acadiana Rgnl altimeter setting.

MISSED APPROACH: Climb to 2000 via LFT R-197 to NOTTA/ LFT 20 DME and hold.

AWOS-3 118.875	LAFAYETTE APP CON* 121.1 268.7	GCO 135.075	UNICOM 122.8 (CTAF) Ø
--------------------------	--	-----------------------	--



CATEGORY	A	B	C	D
CIRCLING	640-1	625 (700-1)	640-1¼ 625 (700-1¼)	NA

MIRL Rwy 15-33 **Ø**
REIL Rwy 15 and 33 **Ø**

SC-4, 19 NOV 2009 to 17 DEC 2009

SC-4, 19 NOV 2009 to 17 DEC 2009