

SULPHUR SPRINGS, TEXAS

AL-5559 (FAA)

VOR-A

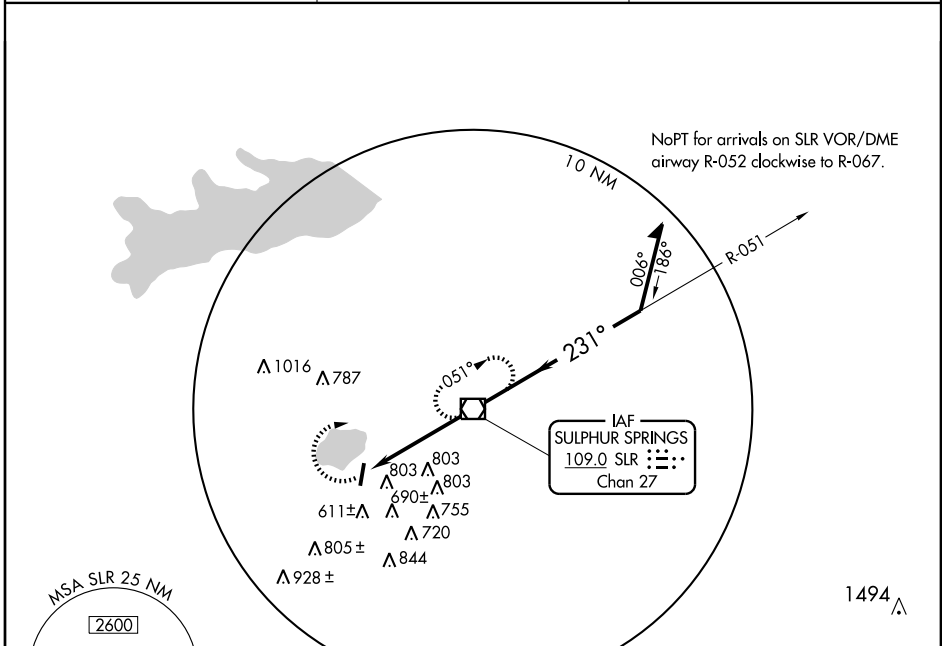
SULPHUR SPRINGS MUNI (SLR)

VOR/DME SLR <b>109.0</b> Chan <b>27</b>	APP CRS <b>231°</b>	Rwy Idg TDZE Apt Elev	<b>N/A</b> <b>N/A</b> <b>489</b>
---	------------------------	-----------------------------	--

▼ Obtain local altimeter setting on CTAF; when not received, use Cox Field altimeter setting minimums.  
 ▲ NA Circling not authorized east of Runway 18-36.

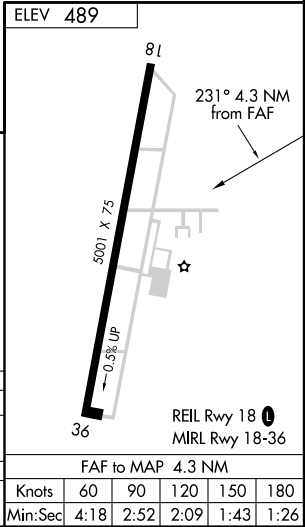
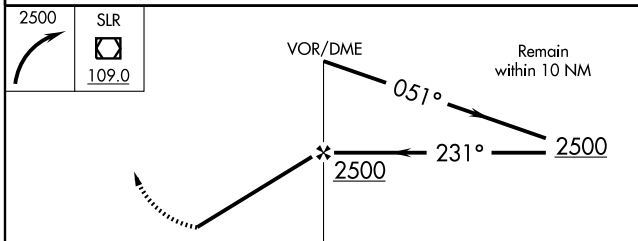
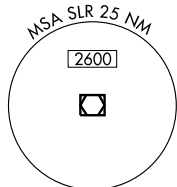
MISSED APPROACH: Climbing right turn to 2500 direct SLR VOR/DME and hold.

AWOS-3 <b>118.35</b>	FORT WORTH CENTER <b>132.85 360.75</b>	UNICOM <b>123.075</b> (CTAF) <b>0</b>
-------------------------	---	--



SC-2, 11 MAR 2010 to 08 APR 2010

SC-2, 11 MAR 2010 to 08 APR 2010



CATEGORY	A	B	C	D
CIRCLING	1060-1	571 (600-1)	1060-1½ 571 (600-1½)	NA
COX FIELD ALTIMETER SETTING MINIMUMS				
CIRCLING	1140-1	651 (700-1)	1140-1¾ 651 (700-1¾)	NA

FAF to MAP 4.3 NM					
Knots	60	90	120	150	180
Min:Sec	4:18	2:52	2:09	1:43	1:26

SULPHUR SPRINGS, TEXAS  
Amdt 4 05020

33° 10' N-95° 37' W

SULPHUR SPRINGS MUNI (SLR)  
VOR-A