

RNAV (GPS) RWY 36

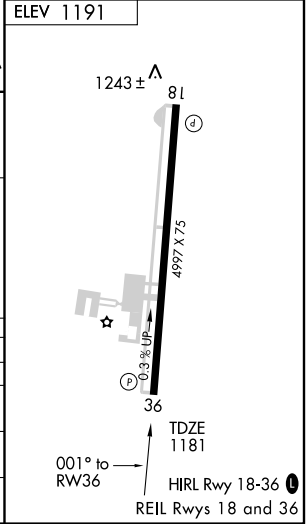
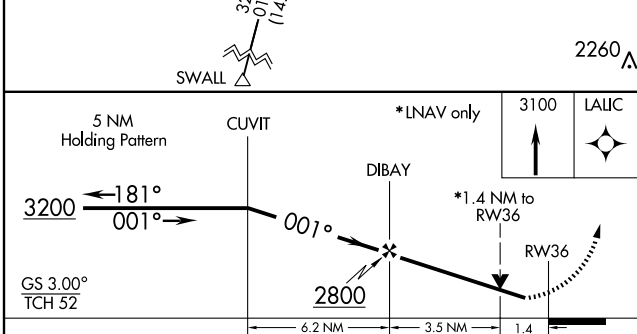
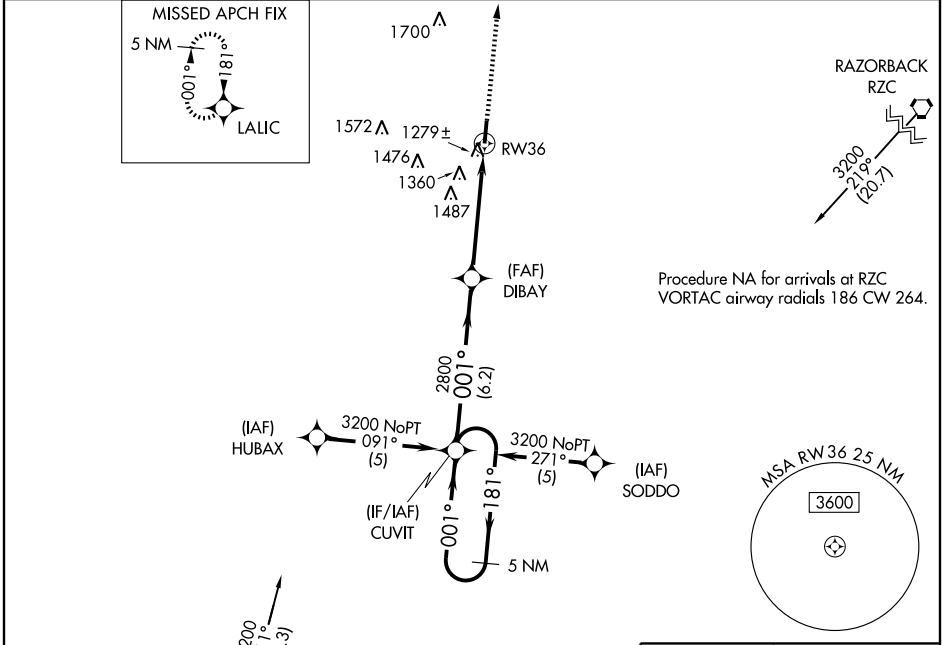
SILOAM SPRINGS/SMITH FIELD (SLG)

WAAS CH 63105 W36A	APP CRS 001°	Rwy Idg 4997 TDZE 1181 Apt Elev 1191
--	------------------------	---

⚠ If local altimeter setting not received, use Northwest Arkansas Rgnl altimeter setting and increase all DAs/MDAs 40 feet. For uncompensated BARO-VNAV systems, LNAV/VNAV NA below -17°C (2°F) or above 46°C (114°F). DME/DME RNP-0.3 NA. Visibility reduction by helicopters NA. BARO-VNAV and VDP NA when using Northwest Arkansas Rgnl altimeter setting.

MISSED APPROACH:
Climb to 3100 direct LALIC and hold.

AWOS-3 118.375	RAZORBACK APP CON * 121.0 244.57	UNICOM 122.8 (CTAF)
--------------------------	--	-------------------------------



CATEGORY	A	B	C	D
LPV DA		1431-1	250 (300-1)	
LNAV/VNAV DA		1549-1 1/4	368 (400-1 1/4)	
LNAV MDA	1660-1	479 (500-1)	1660-1 1/4 479 (500-1 1/4)	1660-1 1/2 479 (500-1 1/2)
CIRCLING	1660-1 469 (500-1)	1720-1 529 (600-1)	1720-1 1/2 529 (600-1 1/2)	1760-2 569 (600-2)

SC-1, 11 MAR 2010 to 08 APR 2010

SC-1, 11 MAR 2010 to 08 APR 2010