

PARIS, TENNESSEE

AL-5576 (FAA)

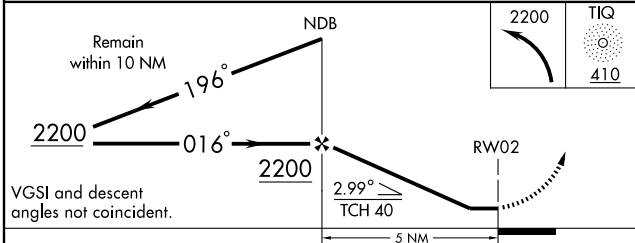
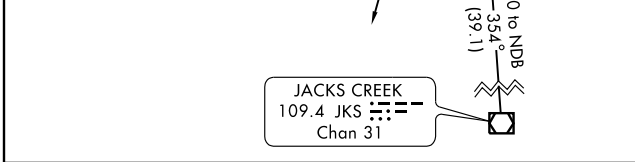
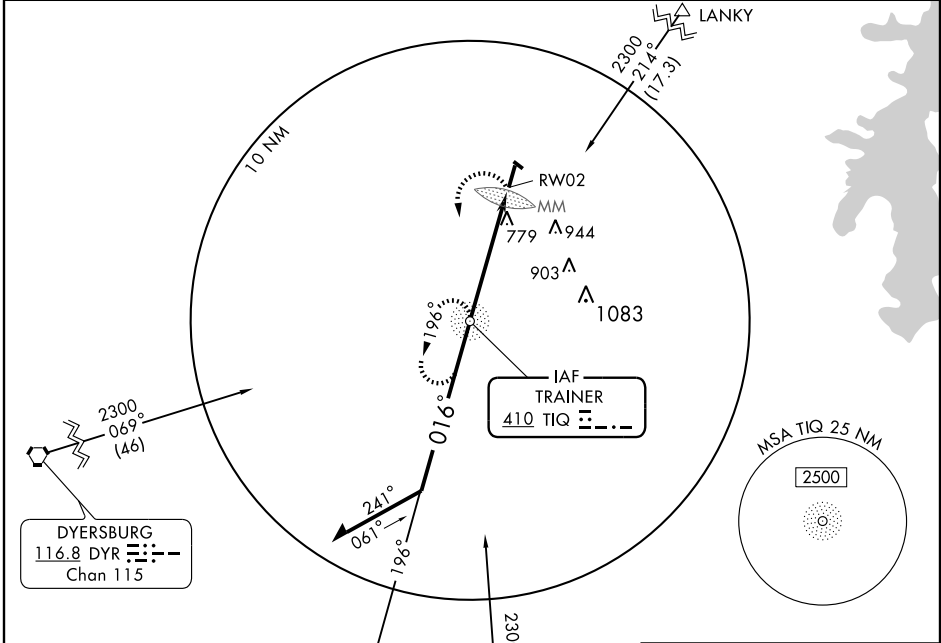
# NDB or GPS RWY 2

PARIS /HENRY COUNTY (PHT)

NDB TIQ	APP CRS	Rwy Idg	5001
<b>410</b>	<b>016°</b>	TDZE	580
		Apt Elev	580

Inoperative table does not apply to S-2 Cat C.	ODALS 	MISSED APPROACH: Climbing left turn to 2200 direct TIQ NDB and hold.
--	-----------	--

AWOS-3 <b>118.825</b>	MEMPHIS CENTER <b>134.65 316.15</b>	UNICOM <b>123.0 (CTAF) 0</b>
--------------------------	--	---------------------------------



CATEGORY	A	B	C	D
S-2	1080- <sup>3</sup> / <sub>4</sub> 500 (500- <sup>3</sup> / <sub>4</sub> )		1080-1 <sup>1</sup> / <sub>4</sub> 500 (500-1 <sup>1</sup> / <sub>4</sub> )	1080-1 <sup>1</sup> / <sub>2</sub> 500 (500-1 <sup>1</sup> / <sub>2</sub> )
CIRCLING	1080-1 500 (500-1)		1080-1 <sup>1</sup> / <sub>2</sub> 560 (600-2)	1140-2 560 (600-2)

Knots	60	90	120	150	180
Min:Sec	5:00	3:20	2:30	2:00	1:40

PARIS, TENNESSEE  
Amdt 2C 06327

36° 20'N-88° 23'W

# NDB or GPS RWY 2

SE-1, 11 MAR 2010 to 08 APR 2010

SE-1, 11 MAR 2010 to 08 APR 2010