

PARIS, TENNESSEE

AL-5576 (FAA)

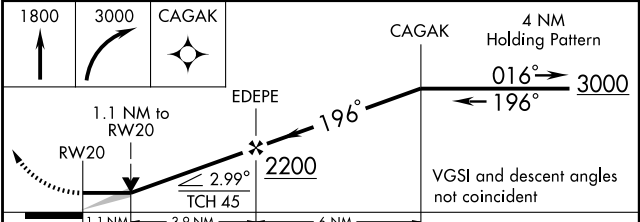
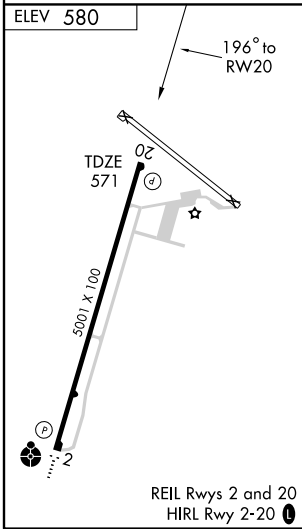
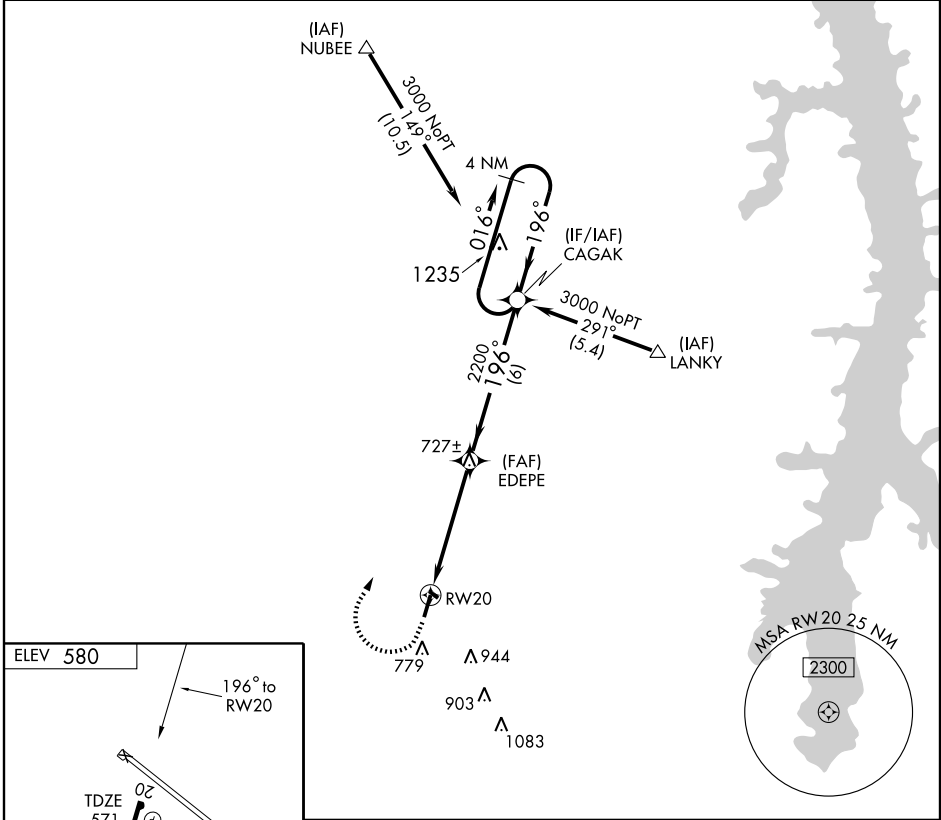
# RNAV (GPS) RWY 20

PARIS / HENRY COUNTY (PHT)

APP CRS	Rwy Idg	<b>5001</b>
<b>196°</b>	TDZE	<b>571</b>
	Apt Elev	<b>580</b>

<b>▲ NA</b>	GPS or RNP-0.3 Required. DME/DME RNP-0.3 NA.	MISSED APPROACH: Climb to 1800 then climbing right turn to 3000 direct CAGAK WP and hold.
-------------	---	---

AWOS-3 <b>118.825</b>	MEMPHIS CENTER <b>134.65 316.15</b>	UNICOM <b>123.0 (CTAF) 0</b>
--------------------------	--	---------------------------------



CATEGORY	A	B	C	D
LNAV MDA	960-1 389 (400-1)			960-1¼ 389 (400-1¼)
CIRCLING	1080-1	500 (500-1)	1080-1½ 500 (500-1½)	1140-2 560 (600-2)

PARIS, TENNESSEE  
Orig 06327

36° 20'N-88° 23'W

# PARIS / HENRY COUNTY (PHT) RNAV (GPS) RWY 20

SE-1, 19 NOV 2009 to 17 DEC 2009

SE-1, 19 NOV 2009 to 17 DEC 2009