

PARIS, TENNESSEE

AL-5776 (FAA)

ILS RWY 2

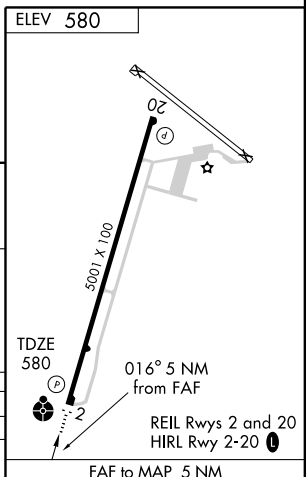
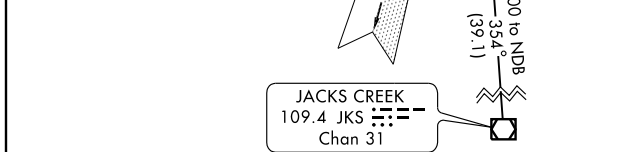
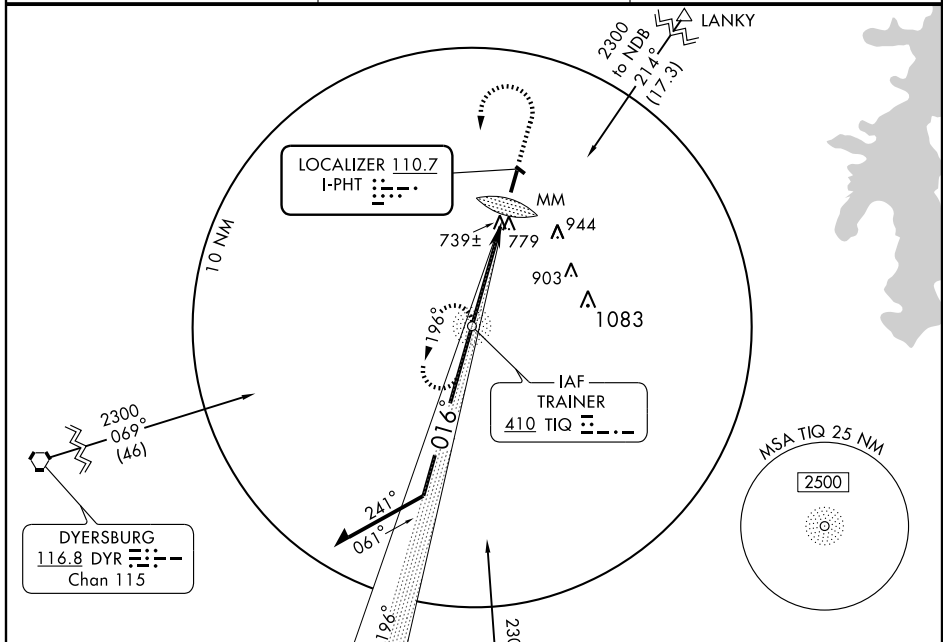
PARIS /HENRY COUNTY (PHT)

LOC I-PHT 110.7	APP CRS 016°	Rwy ldg 5001
		TDZE 580
		Apt Elev 580

▲ NA Inoperative table does not apply to S-LOC Cat C. If local altimeter setting not received, use Jackson altimeter setting and increase all MDAs 140 feet. **ADF REQUIRED.**

ODALS MISSED APPROACH: Climb to 1400 then climbing left turn to 2300 direct TIQ NDB and hold.

AWOS-3 118.825	MEMPHIS CENTER 134.65 316.15	UNICOM 123.0 (CTAF) 0
--------------------------	--	---------------------------------



Remain within 10 NM	NDB			
	2229			
	196°			
	016°			
GS 3.00° TCH 41	2300			
	MM			
	4.5 NM			
	0.5			
CATEGORY	A	B	C	D
S-ILS 2	880-1 300 (300-1)			
S-LOC 2	1020-3/4	440 (500-3/4)	1020-1 1/4 440 (500-1 1/4)	1020-1 1/2 440 (500-1 1/2)
CIRCLING	1080-1	500 (500-1)	1080-1 1/2 500 (500-1 1/2)	1140-2 560 (600-2)

Knots	60	90	120	150	180
Min:Sec	5:00	3:20	2:30	2:00	1:40

PARIS, TENNESSEE
Orig-A 06327

36° 20'N-88° 23'W

PARIS /HENRY COUNTY (PHT)
ILS RWY 2

SE-1, 19 NOV 2009 to 17 DEC 2009

SE-1, 19 NOV 2009 to 17 DEC 2009