

COLUMBIA, MISSOURI

AL-5595 (FAA)

VOR RWY 13

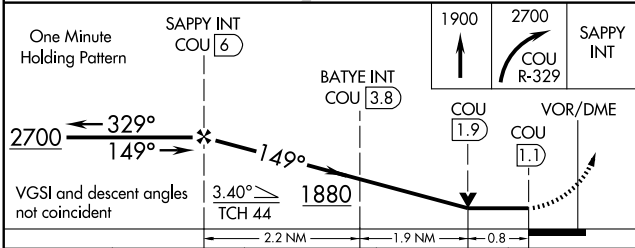
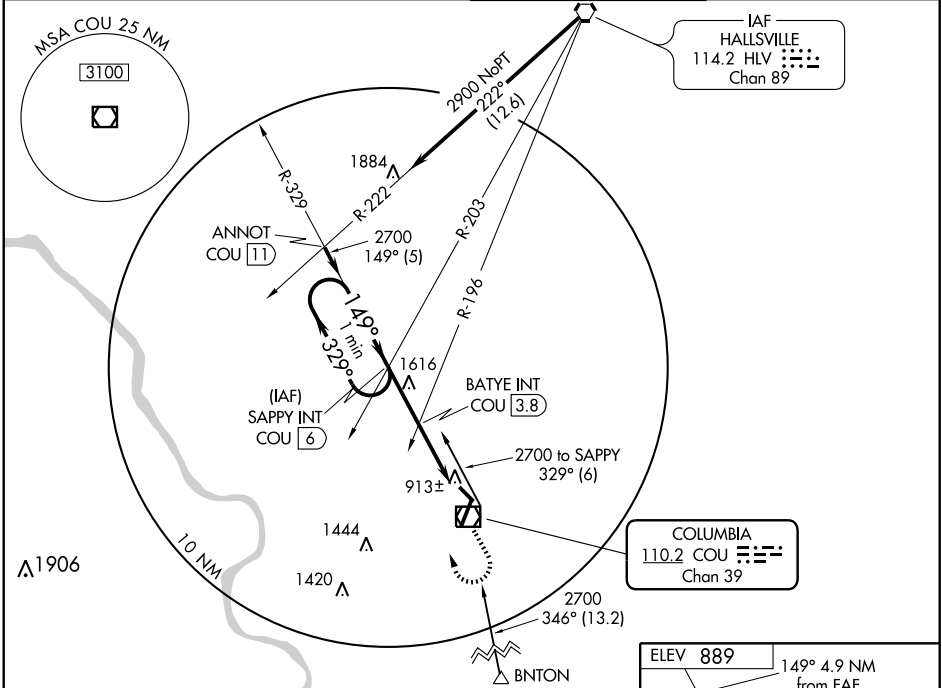
COLUMBIA RGNL (COU)

VOR/DME COU 110.2 Chan 39	APP CRS 149°	Rwy Idg 4401 TDZE 888 Apt Elev 889
---	------------------------	---

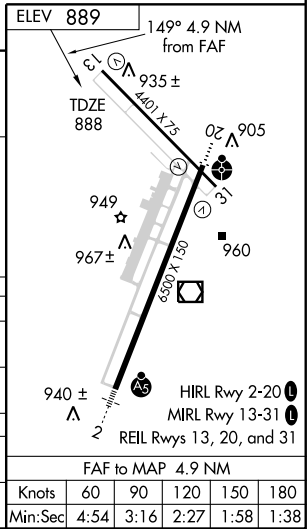
▽
▲

MISSED APPROACH: Climb to 1900 then climbing right turn to 2700 via COU VOR/DME R-329 to SAPPY INT and hold.

ATIS 128.45	MIZZU APP CON 124.375 353.7	COLUMBIA TOWER ★ 119.3 (CTAF) 363.25	GND CON 121.6
-----------------------	---------------------------------------	--	-------------------------



CATEGORY	A	B	C	D
S-13	1880-1¼ 992 (1000-1¼)	1880-1½ 992 (1000-1½)	1880-3 992 (1000-3)	NA
CIRCLING	1880-1¼ 991 (1000-1¼)	1880-1½ 991 (1000-1½)	1880-3 991 (1000-3)	NA
BATYE FIX MINIMUMS				
S-13	1200-1 312 (400-1)			NA
CIRCLING	1300-1 411 (500-1)	1340-1 451 (500-1)	1340-1½ 451 (500-1½)	NA



NC-3, 11 MAR 2010 to 08 APR 2010

NC-3, 11 MAR 2010 to 08 APR 2010

COLUMBIA, MISSOURI
Amdt 3B 09295

38°49'N - 92°13'W

COLUMBIA RGNL (COU)

VOR RWY 13