

DENVER, COLORADO

AL-5612 (FAA)

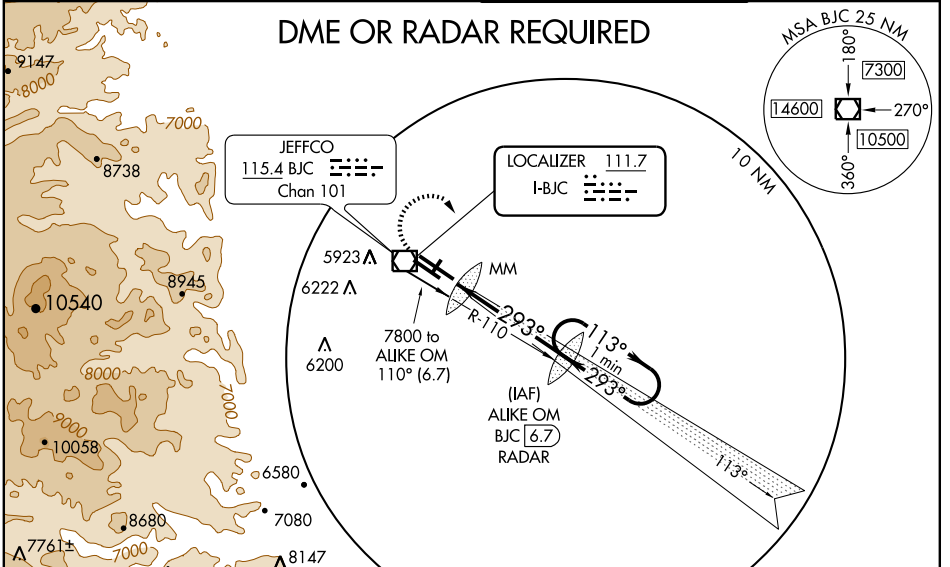
LOC I-BJC 111.7	APP CRS 293°	Rwy 29R Idg TDZE 5595 Apt Elev 5670	Rwy 29L Idg TDZE 5625 Apt Elev 5670
---------------------------	------------------------	---	---

DENVER/
ROCKY MOUNTAIN METROPOLITAN (BJC) **ILS or LOC RWY 29R**

<p>When control tower closed use Denver Intl altimeter setting. For inoperative MALSRR, increase S-LOC 29R Cat. D visibility ¼ mile, and increase Denver Intl altimeter setting S-ILS 29R Cats. A, B, C, D visibility ½ mile.</p>	MALSRR	MISSED APPROACH: Climb to 6300 then climbing right turn to 7200 via BJC VOR/DME R-110 to Alike OM/BJC 6.7 DME/RADAR and hold.

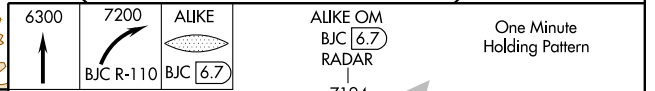
ATIS 126.25	DENVER APP CON 126.1 360.75	METRO TOWER* 118.6 (CTAF) 0 233.7	GND CON 121.7
-----------------------	---------------------------------------	---	-------------------------

DME OR RADAR REQUIRED

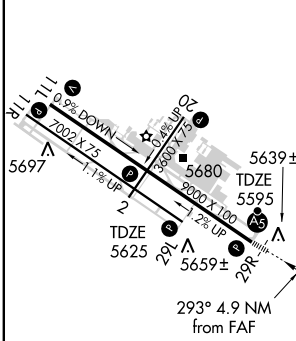


SW-1, 19 NOV 2009 to 17 DEC 2009

SW-1, 19 NOV 2009 to 17 DEC 2009



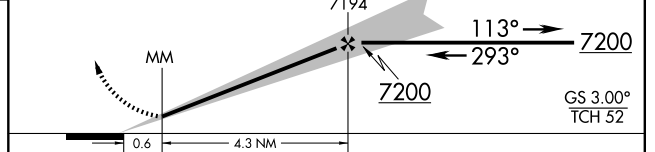
ELEV 5670



REIL Rws 11L, 11R and 29L
MIRL Rws 2-20, 11R-29L and 11L-29R

FAF to MAP 4.9 NM

Knots	60	90	120	150	180
Min:Sec	4:54	3:16	2:27	1:58	1:38



CATEGORY	A	B	C	D
S-ILS 29R	5795-½ 200 (200-½)			
S-LOC 29R	5900-½ 305 (300-½)		5900-¾ 305 (300-¾)	
SIDESTEP 29L	5920-1 295 (300-1)	5920-1½ 295 (300-1½)		5920-2 295 (300-2)
CIRCLING	6180-1 510 (600-1)	6240-1½ 570 (600-1½)		6240-2 570 (600-2)
DENVER INTL ALTIMETER SETTING MINIMUMS				
S-ILS 29R	5877-½ 282 (300-½)			
S-LOC 29R	5980-½ 385 (400-½)		5980-¾ 385 (400-¾)	
SIDESTEP 29L	6000-1 375 (400-1)	6000-1½ 375 (400-1½)		6000-2 375 (400-2)
CIRCLING	6260-1 590 (600-1)	6320-1¾ 650 (700-1¾)		6320-2 650 (700-2)

DENVER, COLORADO
Amdt 13B 08101

DENVER/ROCKY MOUNTAIN METROPOLITAN (BJC)
39°55'N - 105°07'W
ILS or LOC RWY 29R