

DENVER, COLORADO

AL-5612 (FAA)

GPS RWY 29R

DENVER/ROCKY MOUNTAIN METROPOLITAN (B.J.C)

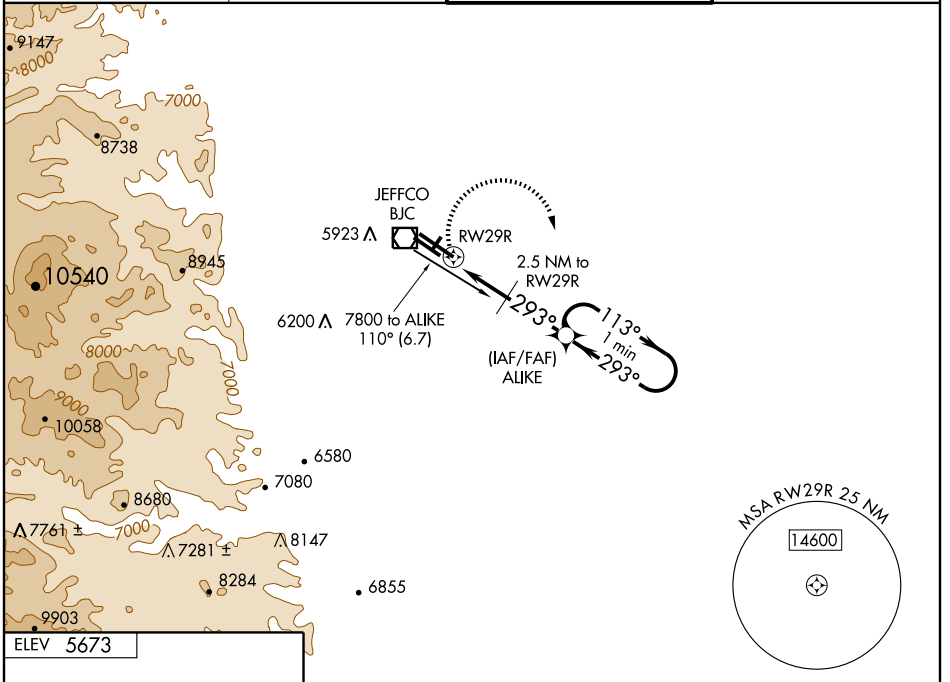
APP CRS 293°	Rwy Idg 9000
	TDZE 5599
	Apt Elev 5673

When control tower closed, use Denver Intl altimeter setting.
 For inoperative MALSR, increase S-29R Cat. D visibility to 1¼ mile.
 Inoperative table does not apply to S-29R Cat. D.
 DME/DME RNP -0.3 NA.



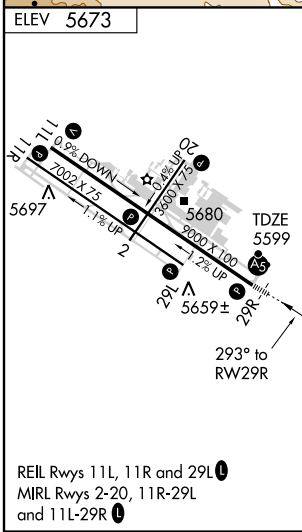
MISSED APPROACH: Climbing right turn to 7000 direct ALIKE WP and hold.

ATIS 126.25	DENVER APP CON 126.1 360.75	METRO TOWER★ 118.6 (CTAF) 233.7	GND CON 121.7
-----------------------	---------------------------------------	---	-------------------------

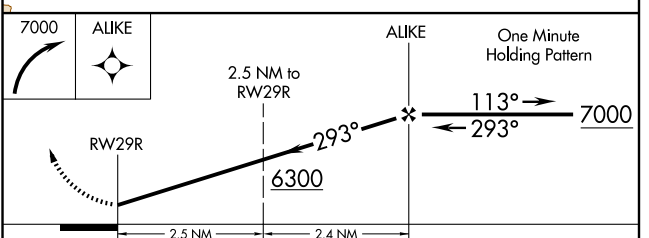


SW-1, 19 NOV 2009 to 17 DEC 2009

SW-1, 19 NOV 2009 to 17 DEC 2009



REIL Rwy's 11L, 11R and 29L
 MIRL Rwy's 2-20, 11R-29L and 11L-29R



CATEGORY	A	B	C	D
S-29R	6000-½	401 (400-½)	6000-¾ 401 (400-¾)	6000-1 401 (400-1)
CIRCLING	6180-1	507 (600-1)	6240-1½ 567 (600-1½)	6240-2 567 (600-2)
DENVER INTL ALTIMETER SETTING MINIMUMS				
S-29R	6100-½	501 (500-½)	6100-1	501 (500-1)
CIRCLING	6260-1	587 (600-1)	6320-1¾ 647 (700-1¾)	6320-2 647 (700-2)

DENVER, COLORADO
 Orig-B 08297

DENVER/ROCKY MOUNTAIN METROPOLITAN (B.J.C)
 39°55'N - 105°07'W
GPS RWY 29R