

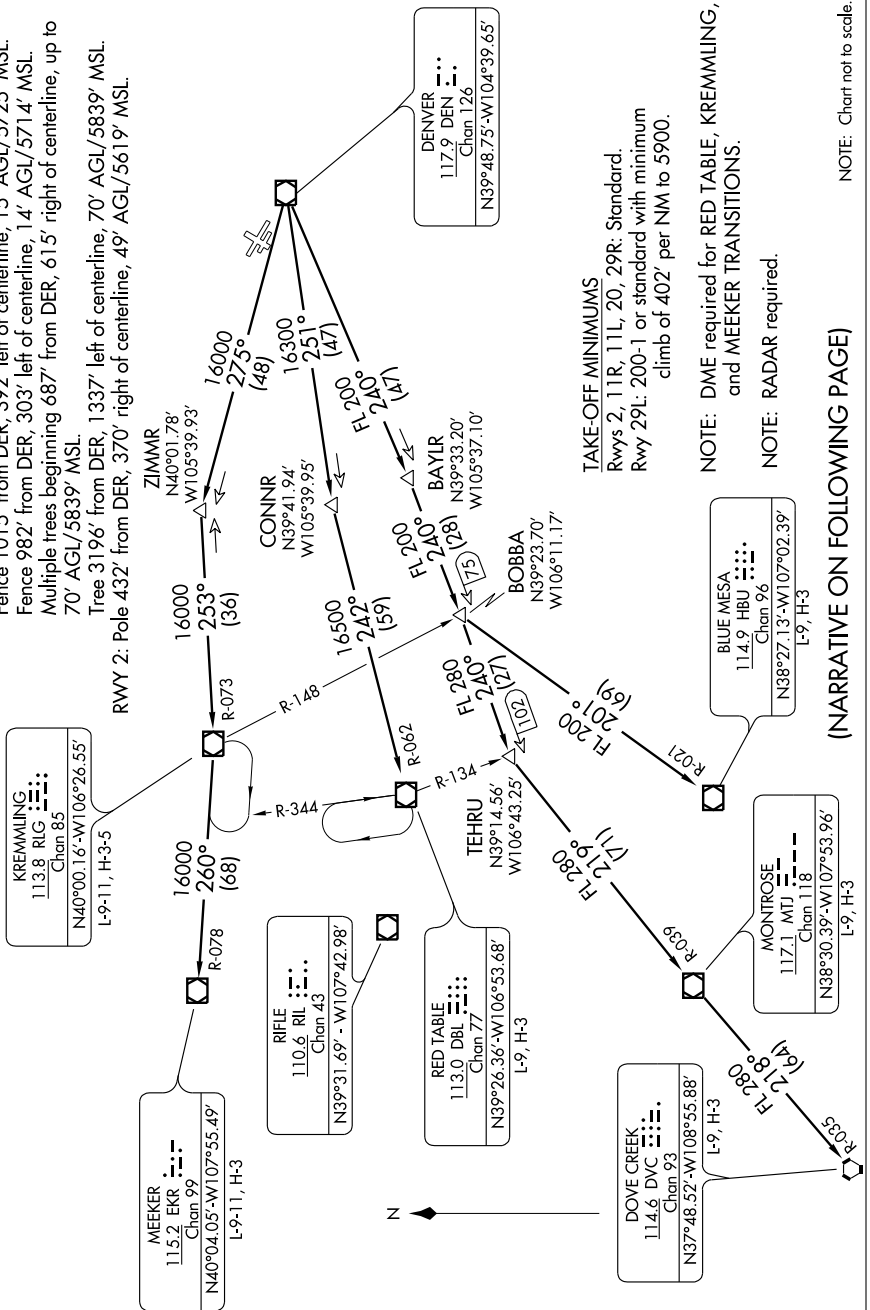
ROCKIES SEVEN DEPARTURE

SW-1, 11 MAR 2010 TO 08 APR 2010

TAKE-OFF OBSTACLE NOTES

RWY 29L: Terrain beginning 45' from DER, 292' left of centerline, up to 5839' MSL.
 Fence 1015' from DER, 392' left of centerline, 15' AGL/5725' MSL.
 Fence 982' from DER, 303' left of centerline, 14' AGL/5714' MSL.
 Multiple trees beginning 687' from DER, 615' right of centerline, up to 70' AGL/5839' MSL.
 Tree 3196' from DER, 1337' left of centerline, 70' AGL/5839' MSL.
 RWY 2: Pole 432' from DER, 370' right of centerline, 49' AGL/5619' MSL.

ATIS 126.25
 DENVER DEP CON
 126.1 360.75



TAKE-OFF MINIMUMS
 Rwys 2, 11R, 11L, 20, 29R: Standard.
 Rwy 29L: 200-1 or standard with minimum climb of 402' per NM to 5900.

NOTE: DME required for RED TABLE, KREMMLING, and MEEKER TRANSITIONS.
NOTE: RADAR required.

(NARRATIVE ON FOLLOWING PAGE)

NOTE: Chart not to scale.

SW-1, 11 MAR 2010 TO 08 APR 2010