


RNAV (GPS) RWY 22

MC MINNVILLE MUNI (MMV)

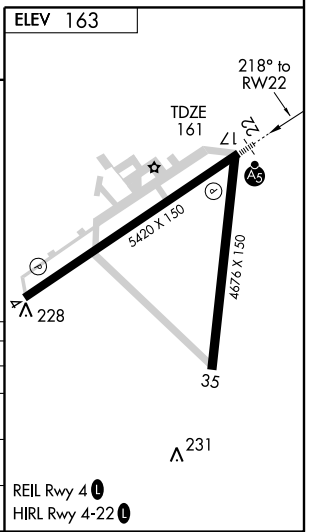
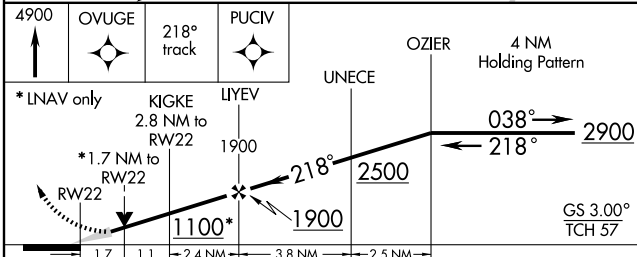
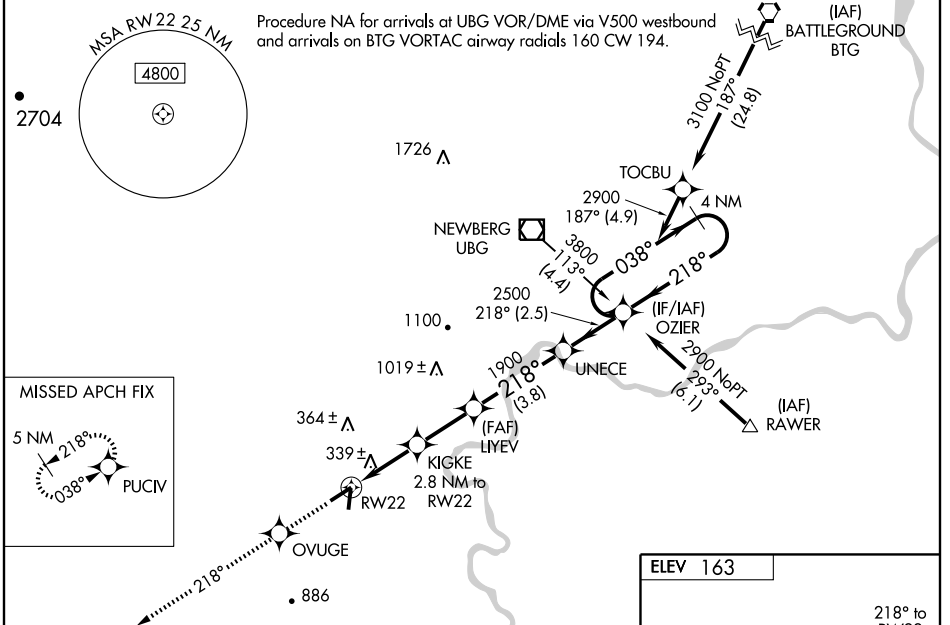
WAAS CH 50309 W22A	APP CRS 218°	Rwy Idg TDZE Apt Elev	5420 161 163
--	------------------------	-----------------------------	---

⚠ For inoperative MALSR, increase LPV all Cats. visibility to 1. Baro-VNAV NA when using Aurora State altimeter setting. For uncompensated Baro-VNAV systems, LNAV/VNAV NA below -1.5°C (5°F) or above 48°C (118°F). DME/DME RNP-0.3 NA. For inoperative MALSR when using Aurora State altimeter setting increase LPV visibility all Cats. to 1¼. VDP NA when using Aurora State altimeter setting. When local altimeter setting not received, use Aurora State altimeter setting and increase all DA and MDA 60 feet, increase all visibility ¼ mile.

MALSR


MISSED APPROACH: Climb to 4900 direct OVUGE then via 218° track to PUCIV and hold, continue climb-in-hold to 4900.

ASOS 135.675	PORTLAND APP CON 126.0 284.6 (NORTH)	SEATTLE CENTER 125.8 291.7 (SOUTH)	McMINNVILLE RADIO 122.45	CLNC DEL 118.35	UNICOM 123.0 (CTAF) 0
------------------------	--	--	------------------------------------	---------------------------	--



CATEGORY	A	B	C	D
LPV DA	474-½ 313 (400-½)			
LNAV/VNAV DA	633-1¼ 472 (500-1¼)			
LNAV MDA	740-½ 579 (600-½)	740-1 579 (600-1)	740-1¼ 579 (600-1¼)	740-1¼ 579 (600-1¼)
CIRCLING	740-1 577 (600-1)	760-1½ 597 (600-1½)	880-2¼ 717 (800-2¼)	880-2¼ 717 (800-2¼)

NW-1, 19 NOV 2009 to 17 DEC 2009

NW-1, 19 NOV 2009 to 17 DEC 2009