

# VOR/DME-B

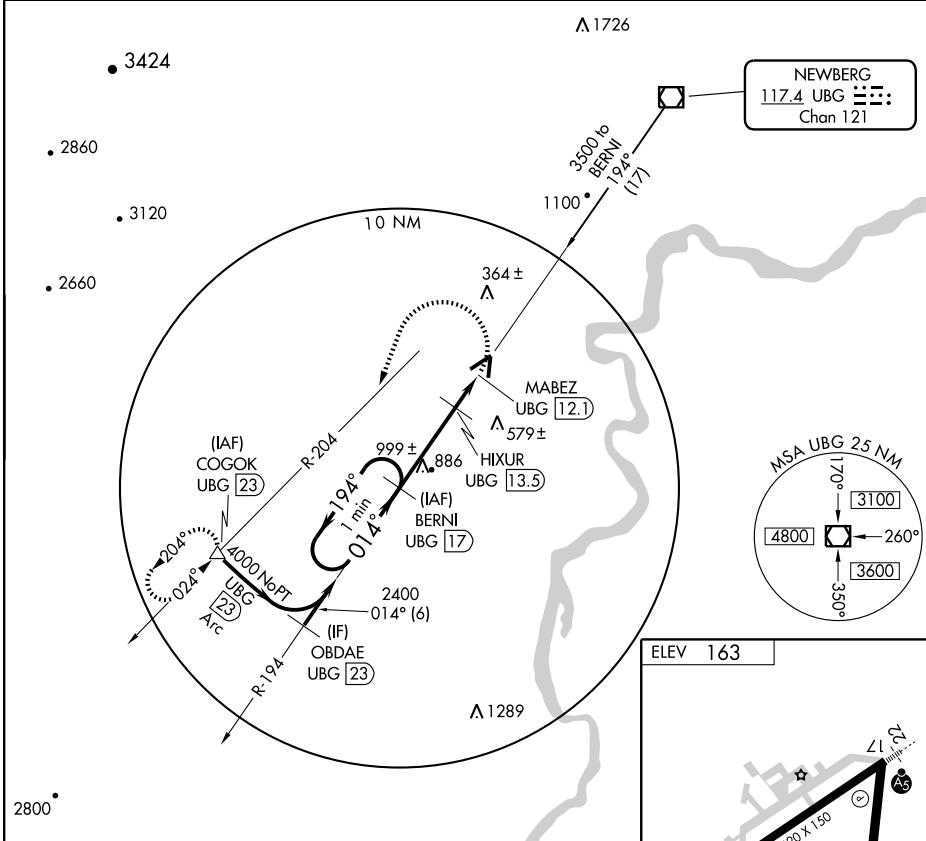
MC MINNVILLE MUNI (MMV)

VOR/DME UBG <b>117.4</b> Chan <b>121</b>	APP CRS <b>014°</b>	Rwy Idg TDZE Apt Elev <b>N/A</b> <b>N/A</b> <b>163</b>
--	------------------------	---

**⚠** When local altimeter setting not received use Aurora State altimeter setting and increase all MDA 60 feet and all visibility 1/4 mile.

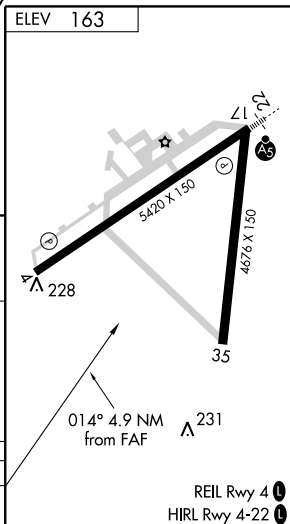
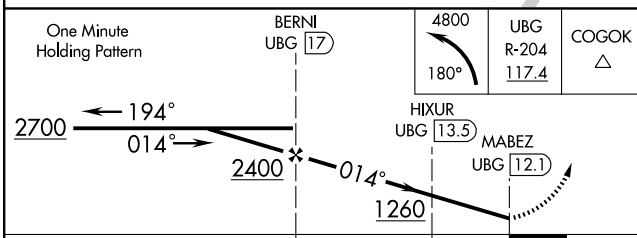
**MISSED APPROACH:** Climbing left turn to 4800 via heading 180° and UBG VOR/DME R-204 to COGOK/UBG 23 DME and hold, continue climb-in-hold to 4800.

ASOS <b>135.675</b>	PORTLAND APP CON <b>126.0 284.6 (NORTH)</b>	SEATTLE CENTER <b>125.8 291.7 (SOUTH)</b>	McMINNVILLE RADIO <b>122.45</b>	CLNC DEL <b>118.35</b>	UNICOM <b>123.0 (CTAF)</b>
------------------------	--	--	------------------------------------	---------------------------	-------------------------------



NW-1, 19 NOV 2009 to 17 DEC 2009

NW-1, 19 NOV 2009 to 17 DEC 2009



CATEGORY	A	B	C	D
CIRCLING	840-1	677 (700-1)	840-2 677 (700-2)	880-2 1/4 717 (800-2 1/4)