

RNAV (GPS) RWY 4

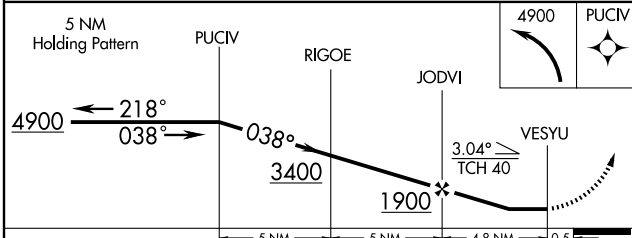
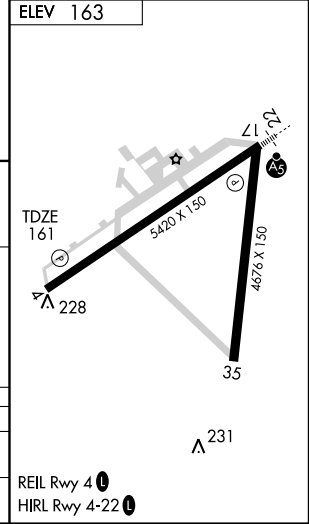
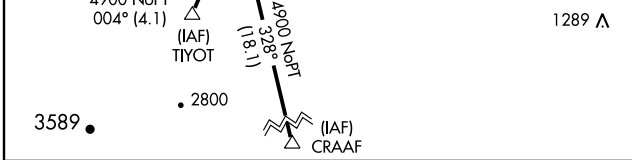
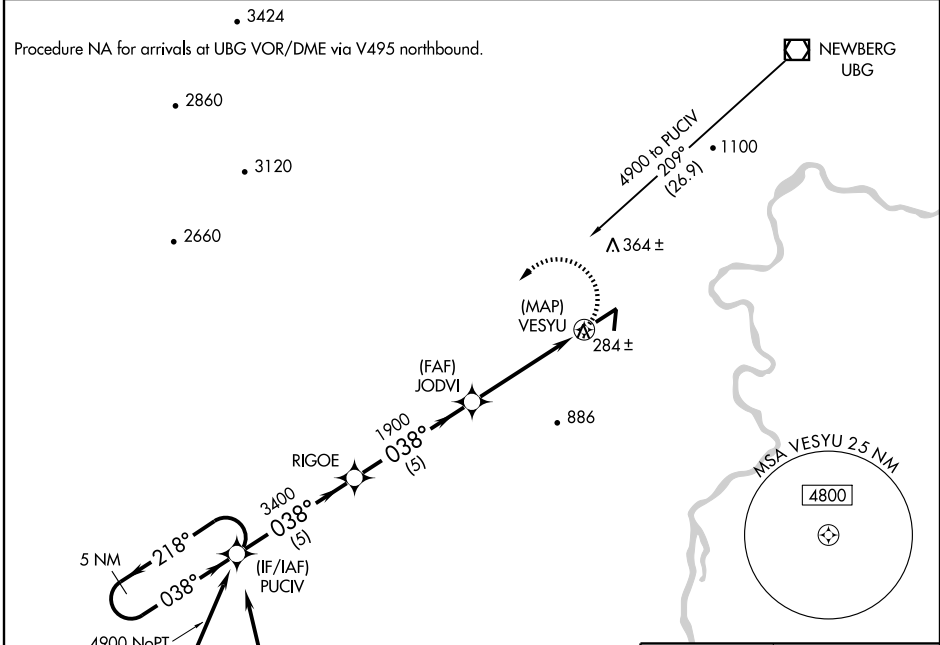
MC MINNVILLE MUNI (MMV)

APP CRS	Rwy Idg	5420
038°	TDZE	161
	Apt Elev	163

▼ DME/DME RNP- 0.3 NA. Visibility reduction by helicopters NA.
▲ When local altimeter setting not received, use Aurora State altimeter setting and increase all MDA 60 feet and all visibility ¼ mile.

MISSED APPROACH: Climbing left turn to 4900 direct PUCIV and hold, continue climb-in-hold to 4900.

ASOS 135.675	PORTLAND APP CON 126.0 284.6 (NORTH)	SEATTLE CENTER 125.8 291.7 (SOUTH)	McMINNVILLE RADIO 122.45	CLNC DEL 118.35	UNICOM 123.0 (CTAF)
------------------------	--	--	------------------------------------	---------------------------	-------------------------------



CATEGORY	A	B	C	D
LNAV MDA	580-1	419 (500-1)	580-1¼	419 (500-1¼)
CIRCLING	640-1	477 (500-1)	760-1½ 597 (600-1½)	880-2¼ 717 (800-2¼)

NW-1, 19 NOV 2009 to 17 DEC 2009

NW-1, 19 NOV 2009 to 17 DEC 2009