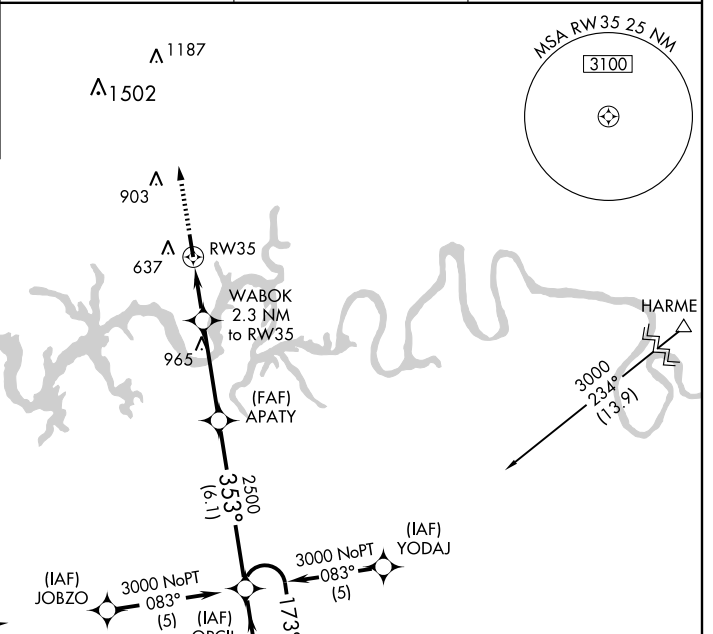
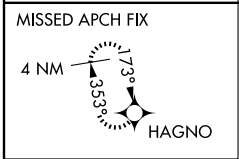


RNAV (GPS) RWY 35

GALLATIN/SUMNER COUNTY RGNL (M33)

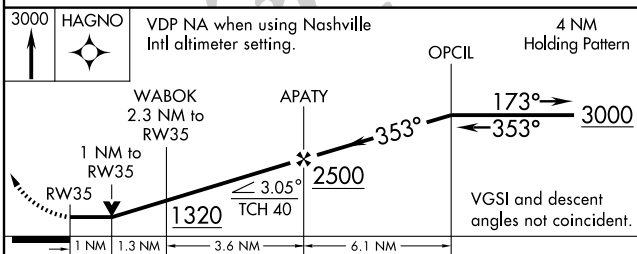
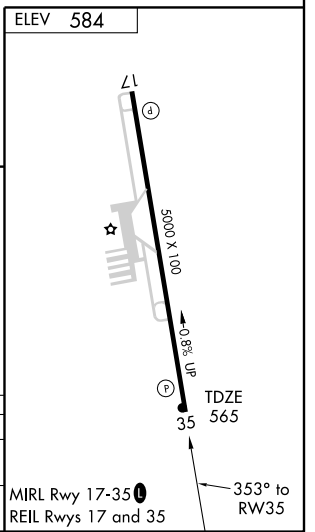
APP CRS 353°	Rwy Idg 5000
	TDZE 565
	Apt Elev 584

<p>▽ If local altimeter setting not received, use Nashville Intl altimeter setting and increase all MDAs 60 feet. △NA GPS or RNP-0.3 Required. DME/DME RNP-0.3 NA.</p>		<p>MISSED APPROACH: Climb to 3000 direct HAGNO WP and hold.</p>	
AWOS-3 132.725	NASHVILLE APP CON 118.4 360.7	GCO 135.075	UNICOM 123.05 (CTAF) 0



NASHVILLE BNA → 3000 085° (10.5)

Procedure NA for arrivals at BNA VORTAC on V-140 westbound or for arrivals at HARME INT on V-140 eastbound



CATEGORY	A	B	C	D
LNVA MDA	940-1 375 (400-1)		940-1 ¼ 375 (400-1¼)	
CIRCLING	1140-1 556 (600-1)	1140-1½ 556 (600-1½)	1240-2 656 (700-2)	MIRL Rwy 17-35 0 REIL Rwy 17 and 35

SE-1, 19 NOV 2009 to 17 DEC 2009

SE-1, 19 NOV 2009 to 17 DEC 2009