

# RNAV (RNP) RWY 21

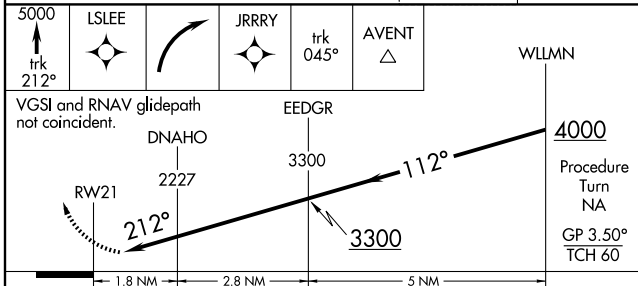
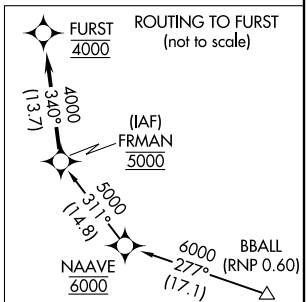
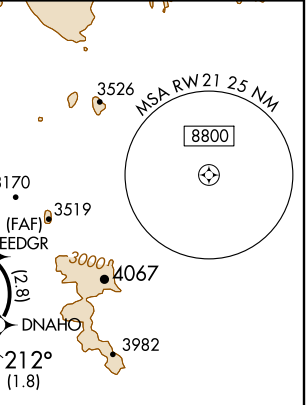
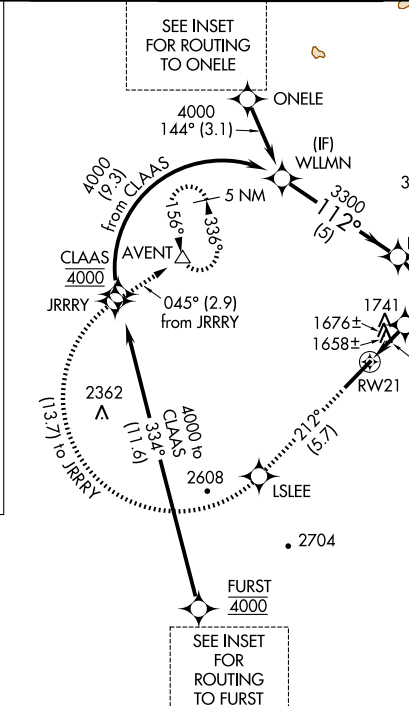
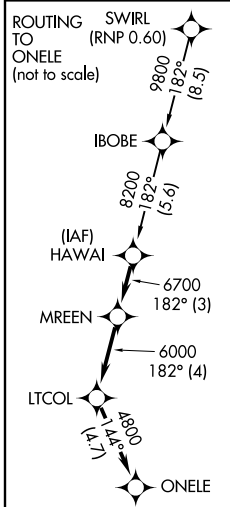
SCOTTSDALE (SDL)

APP CRS	Rwy Idg	<b>7109</b>
<b>212°</b>	TDZE	<b>1510</b>
	Apt Elev	<b>1510</b>

**▼** RF and GPS required. Visibility reduction by helicopters NA. For uncompensated Baro-VNAV systems, procedure NA below 1°C (31°F) or above 44°C (112°F). When local altimeter setting not received procedure NA.

**MISSED APPROACH:** Climb to 5000 via track 212° to LSLEE, and via right turn to JRRRY, and via track 045° to AVENT and hold.

ATIS <b>118.6</b>	PHOENIX APP CON <b>120.7 239.0</b>	SCOTTSDALE TOWER * <b>119.9(CTAF) 0</b>	GND CON <b>121.6</b>	CLNC DEL <b>124.8</b>
----------------------	---------------------------------------	--	-------------------------	--------------------------



CATEGORY	A	B	C	D
RNP 0.10 DA	1948-1¼	438 (500-1¼)		NA
RNP 0.16 DA	1987-1½	477 (500-1½)		NA

**SPECIAL AIRCRAFT & AIRCREW AUTHORIZATION REQUIRED**

SW-4, 11 MAR 2010 to 08 APR 2010

SW-4, 11 MAR 2010 to 08 APR 2010