

# RNAV (RNP) Y RWY 3

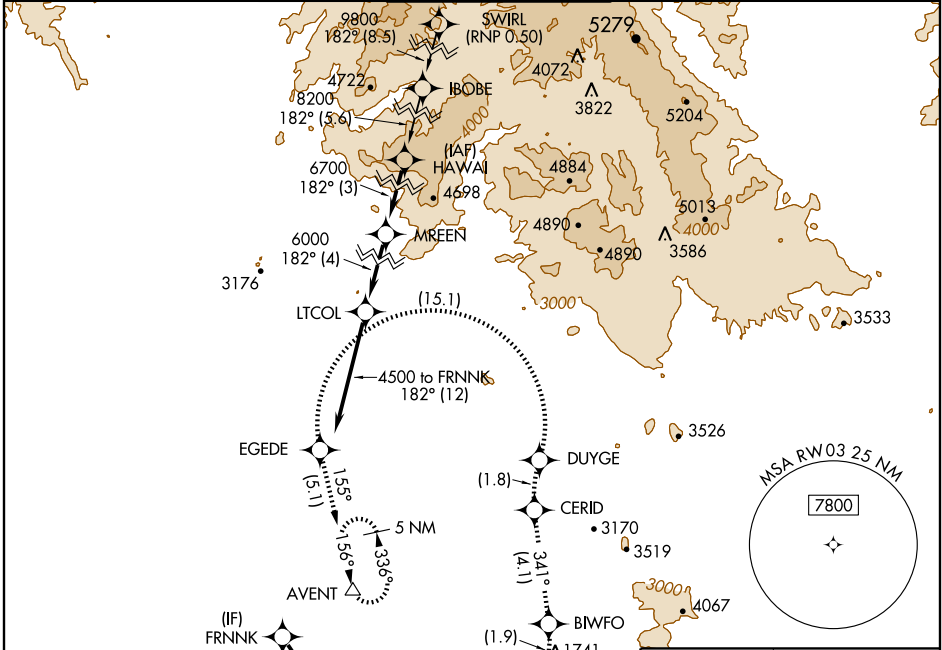
SCOTTSDALE (SDL)

APP CRS	Rwy Idg	<b>7510</b>
<b>032°</b>	TDZE	<b>1470</b>
	Apt Elev	<b>1510</b>

▼ RF and GPS required. Visibility reduction by helicopters NA. For uncompensated Baro-VNAV systems, procedure NA below 1°C (31°F) or above 54°C (130°F). When local altimeter setting not received procedure NA. Missed approach requires RNP less than 1.0.

MISSED APPROACH: Climb to 5000 via left turn to AXFUR, and via left turn to BIWFO, and via track 341° to CERID, and via right turn to DUYGE, and via left turn to EGEDE, and via track 155° to AVENT and hold.

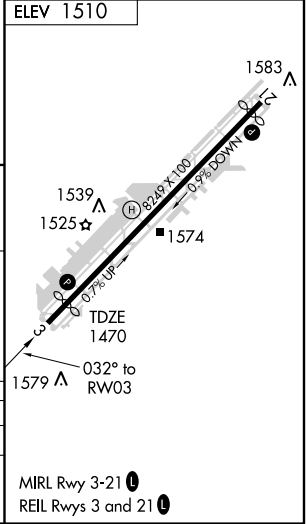
ATIS	PHOENIX APP CON	SCOTTSDALE TOWER *	GND CON	CLNC DEL
<b>118.6</b>	<b>120.7 239.0</b>	<b>119.9 (CTAF) 0</b>	<b>121.6</b>	<b>124.8</b>



SW-4, 19 NOV 2009 to 17 DEC 2009

SW-4, 19 NOV 2009 to 17 DEC 2009

(IF) FRNKK	(FAF) RUTHH	(IF) ANNDD	(IF) GRYHM	(IF) AXFUR	(IF) BIWFO
4000	3600	3600	2542	1505 ± Δ	1741
134°	134° (2)	134° (2)	032°	032°	032°
(4)	(3.2)	(3.2)	(3.3)	(3.3)	(1.8)



VGSI and RNAV glidepath not coincident.				5000	AXFUR	BIWFO
FRNKK	ANNDD	RUTHH	GRYHM			
4500	4000	3600	2542			
Procedure Turn NA						
GP 3.00°						
TCH 60						
	4 NM	2 NM	3.2 NM	3.3 NM		

CATEGORY	A	B	C	D
RNP 0.30 DA	1829-1¼	359 (400-1¼)		NA

**SPECIAL AIRCRAFT & AIRCREW AUTHORIZATION REQUIRED**

MIRL Rwy 3-21 0  
REIL Rwy 3 and 21 0