

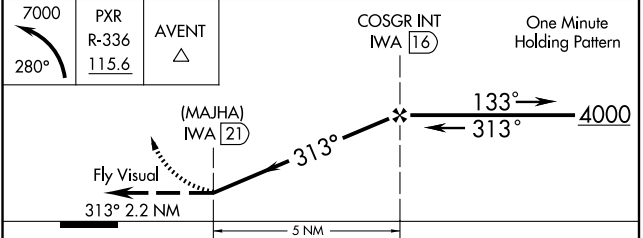
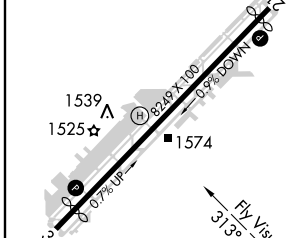
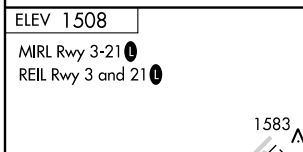
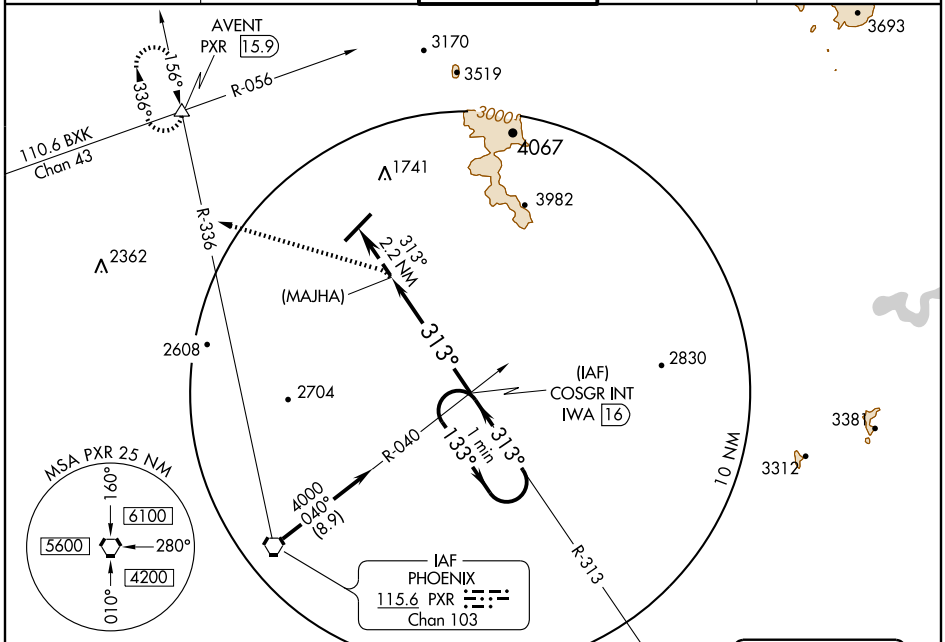
VOR or GPS-C
SCOTTSDALE (SDL)

VORTAC IWA 113.3 Chan 80	APP CRS 313°	Rwy Idg TDZE Apt Elev 1508	N/A N/A 1508
--	------------------------	---	---------------------------

⚠ When local altimeter setting not received, use Phoenix Sky Harbor altimeter setting minimums.

MISSED APPROACH: Climbing left turn to 7000 via heading 280° and PXR R-336 outbound, reaching 7000, continue direct AVENT Int/PXR 15.9 DME and hold.

ATIS 118.6	PHOENIX APP CON 120.7 239.0	SCOTTSDALE TOWER* 119.9 (CTAF) 0	GND CON 121.6	CLNC DEL 124.8
----------------------	---------------------------------------	--	-------------------------	--------------------------



FAF to MAP 5 NM		PHOENIX SKY HARBOR ALTIMETER SETTING MINIMUMS			
Knots	60	90	120	150	180
Min:Sec	5:00	3:20	2:30	2:00	1:40
CIRCLING	2400-2½ 892 (900-2½)		2400-2¾ 892 (900-2¾)		NA
CIRCLING	2480-2½ 972 (1000-2½)		2480-3 972 (1000-3)		NA

SW-4, 19 NOV 2009 to 17 DEC 2009

SW-4, 19 NOV 2009 to 17 DEC 2009