

RNAV (RNP) Z RWY 3

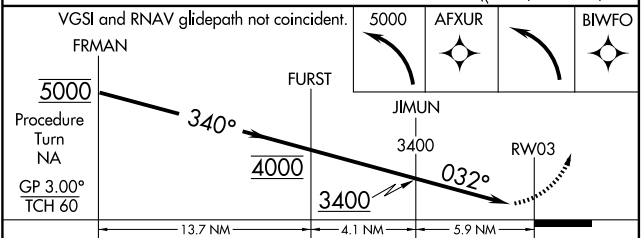
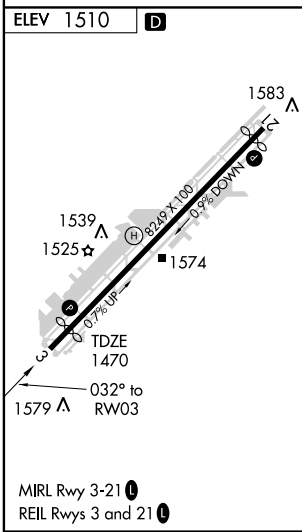
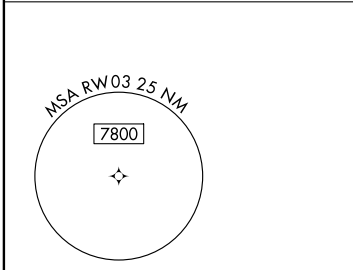
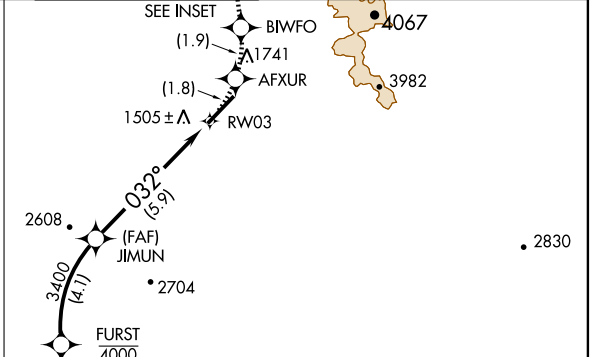
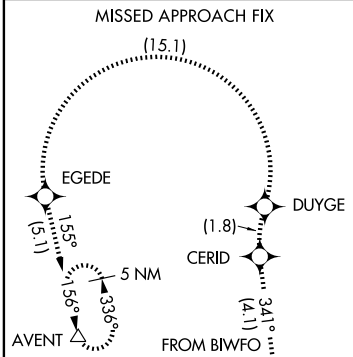
SCOTTSDALE (SDL)

APP CRS	Rwy Idg	7109
032°	TDZE	1470
	Apt Elev	1510

▼ RF and GPS required. Visibility reduction by helicopters NA. For uncompensated Baro-VNAV systems, procedure NA below 1°C (31°F) or above 54°C (130°F). When local altimeter setting not received procedure NA. Missed approach requires RNP less than 1.0.

MISSED APPROACH: Climb to 5000 via left turn to AFXUR, and via left turn to BIWFO, and via track 341° to CERID, and via right turn to DUYGE, and via left turn to EGEDE, and via track 155° to AVENT and hold.

ATIS 118.6	PHOENIX APP CON 120.7 239.0	SCOTTSDALE TOWER* 119.9(CTAF) 0	GND CON 121.6	CLNC DEL 124.8
----------------------	---------------------------------------	---	-------------------------	--------------------------



CATEGORY	A	B	C	D
RNP 0.30 DA	1829-1¼ 359 (400-1¼)			NA

SPECIAL AIRCRAFT & AIRCREW AUTHORIZATION REQUIRED

SW-4, 11 FEB 2010 to 11 MAR 2010

SW-4, 11 FEB 2010 to 11 MAR 2010